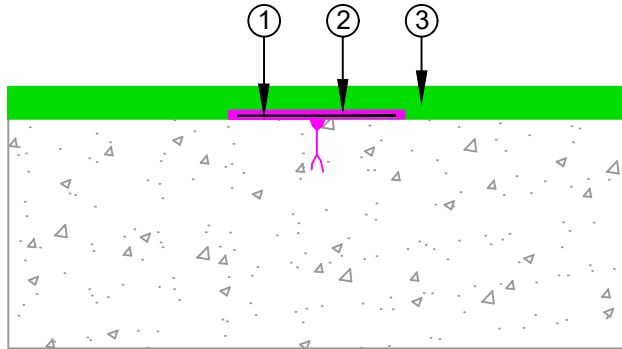


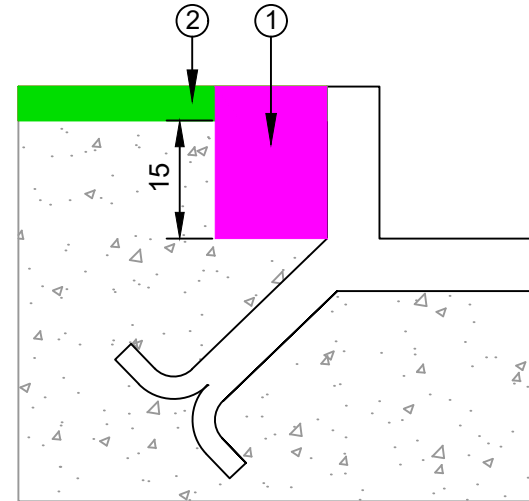
CRACK IN THE SUBSTRATE

- ① Fabric
- ② MATACRYL LM flexibled binder
- ③ MONOPUR Flooring System



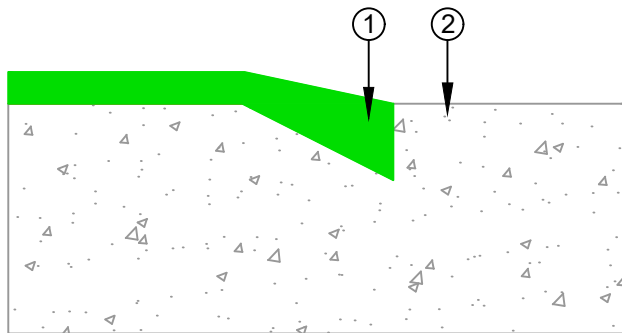
CONNECTIONS TO DRAINAGE SYSTEM & SUMPS

- ① Cut connection. Fill with MATACRYL LM flexibled resin
- ② MONOPUR Flooring System



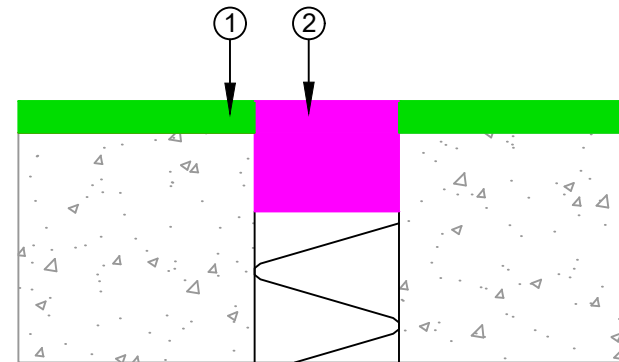
CONNECTION TO VERTICAL SURFACE
FREE CONNECTION AT THE DURACON FLOORING END

- ① MONOPUR Flooring System
- ② Connecting area



Expansion Joints

- ① MONOPUR Flooring System
- ② Approved Sealant



E-mail : info@equus.nz
Web : www.equus.nz

PRODUCT :	EQUUS Monopur SL Flooring to Concrete Substrate		
TITLE :	Typical Detail		
NUMBER :	EMSL-D14	SCALE :	NTS
DRAWN BY :	NKT	DATE :	16-Sep-2024
		REVISED :	

Equus standard details are especially drawn for use by Local Authorities, Building Contractors, Equus Applicators, Architects and design professionals. All details are drawn to assist in the development of project-specific details. Details may be modified where necessary to accommodate job-specific requirements but must be approved by Equus Industries Ltd. All components must be supplied by Equus Industries Ltd. Equus reserves the right to alter or upgrade details at any time without prior notice.