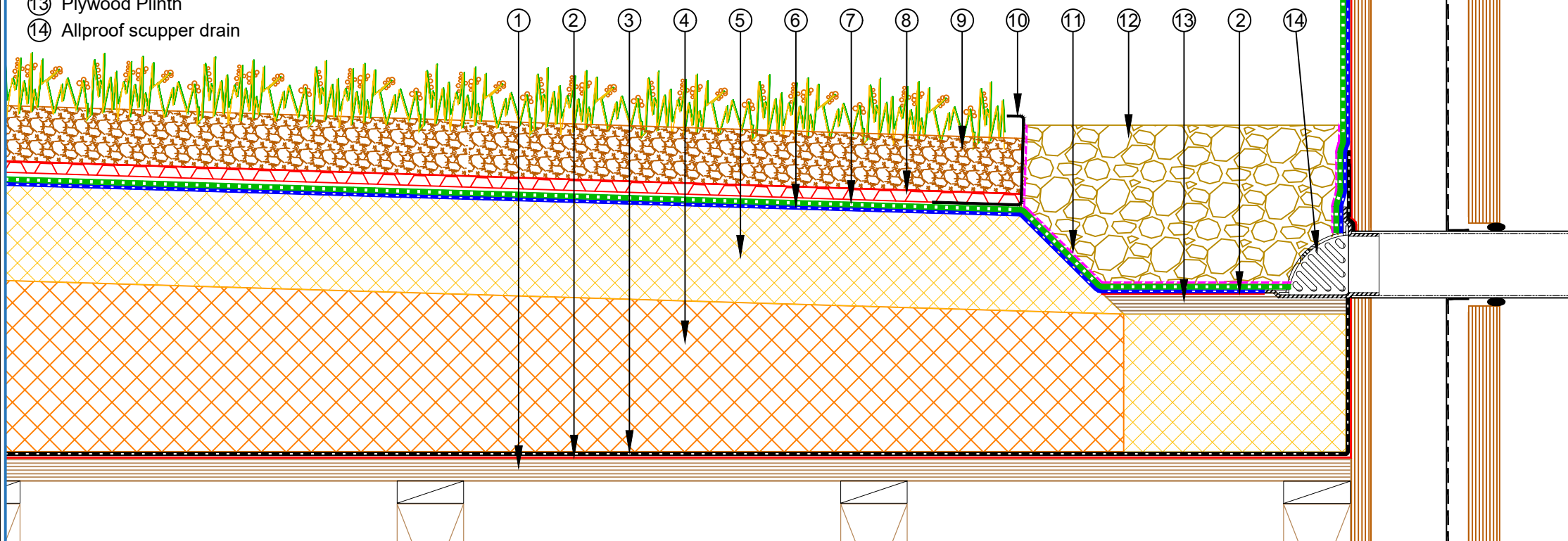


- ① Plywood Deck
- ② EQUUS Peel & Stick primer
- ③ EQUUS SOPREMA Colphene 3000, Vapour barrier
- ④ EQUUS EPS Thermal insulation Board
- ⑤ EQUUS SOPREMA SOPRA-ISO Silver PIR thermal insulation (or equivalent)
- ⑥ EQUUS SOPREMA SOPRASTICK Venti Tack Plus, base sheet (Partially bonded, self-adhesive)
- ⑦ EQUUS SOPREMA DuO HT 4 WGG/F C180 Firecare Landscape, cap sheet (Fully bonded, torch-on)
- ⑧ EQUUS SOPREMA Sopradrain 10G or Danodren H15, drainage and protection layer
- ⑨ Green roof substrate and vegetation
- ⑩ Metal grating, Gravel guard
- ⑪ Geo-textile separation layer
- ⑫ Round pebble stones
- ⑬ Plywood Plinth
- ⑭ Allproof scupper drain



E-mail : info@equus.nz
 Web : www.equus.co.nz

PROJECT :	EQUUS SOPREMA DuOthem Extensive Green Roof Standard on Plywood		
TITLE :	Green roof scupper drain detail		
NUMBER :	SDGWP-D3a	SCALE :	NTS
DRAWN BY :	NKT	DATE :	14-Mar-2024
		REVISED :	

Equus Waterproof Membrane Details are specially drawn for use by Local Authorities, Building Contractors, Equus Applicators, Architects and design professionals. All details are drawn to assist in the development of project specific details. Details may be modified where necessary to accommodate job specific requirements but must be approved by Equus Industries Ltd. All components must be supplied by Equus Industries Ltd. Equus reserves the right to alter or upgrade details at any time without prior notice.

