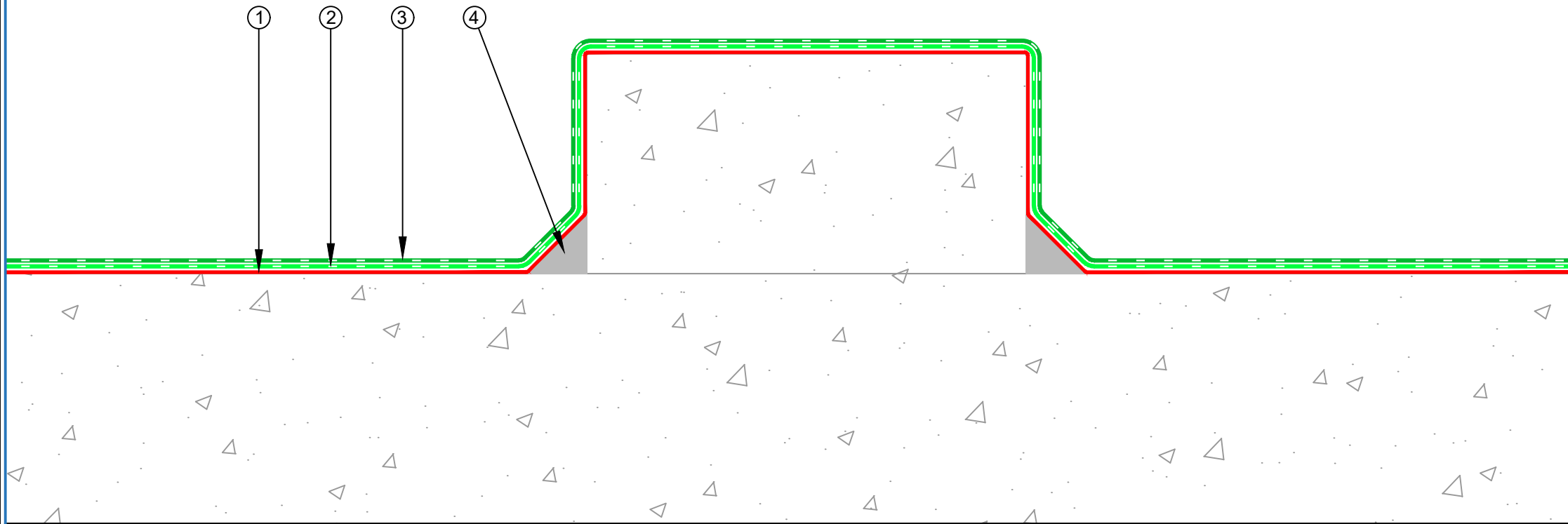


- ① EQUUS Chevaline Epistixx primer
- ② EQUUS Chevaline Epistixx Rapid SL
- ③ EQUUS Chevaline Epistixx Rapid Topcoat NS or other approved Topcoat (optional)
- ④ Mortar fillet



E-mail : [info@equus.nz](mailto:info@equus.nz)  
 Web : [www.equus.nz](http://www.equus.nz)

|            |  |           |             |
|------------|--|-----------|-------------|
| PRODUCT :  | Chevaline Epistixx SL Flooring on Concrete Substrate Standard Detail |           |             |
| TITLE :    | Standard concrete plinth detail                                      |           |             |
| NUMBER :   | ECESL-D3   | SCALE :   | NTS         |
| DRAWN BY : | NKT  | DATE :    | 12-Mar-2024 |
|            |  | REVISED : |             |

Equus standard details are especially drawn for use by Local Authorities, Building Contractors, Equus Applicators, Architects and design professionals. All details are drawn to assist in the development of project-specific details. Details may be modified where necessary to accommodate job-specific requirements but must be approved by Equus Industries Ltd. All components must be supplied by Equus Industries Ltd. Equus reserves the right to alter or upgrade details at any time without prior notice.