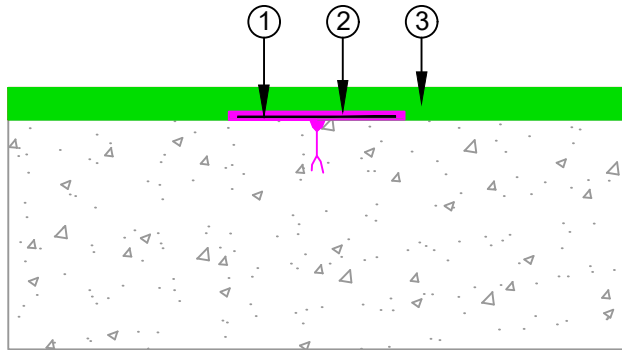


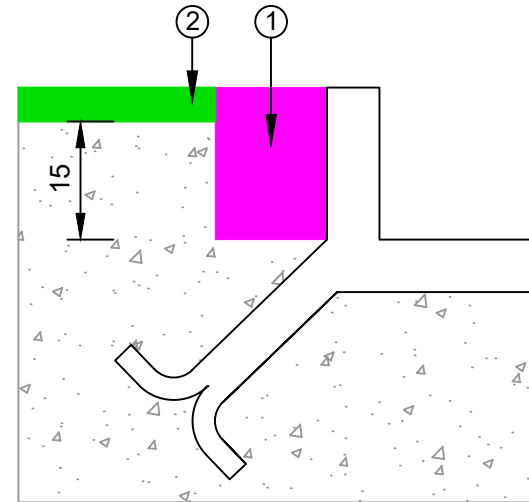
CRACK IN THE SUBSTRATE

- ① Fabric
- ② EQUUS Dymonic 100 sealant
- ③ EQUUS Chevaline Epistixx SL



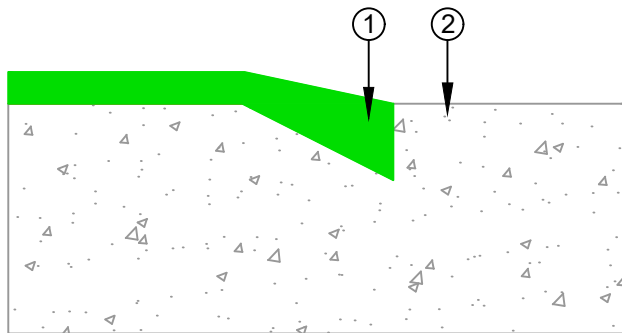
CONNECTIONS TO DRAINAGE SYSTEM & SUMPS

- ① Cut connection. Fill with EQUUS Dymonic 100 sealant
- ② EQUUS Chevaline Epistixx SL



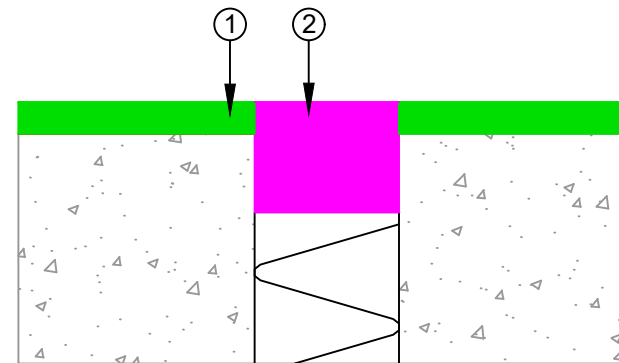
CONNECTION TO VERTICAL SURFACE  
FREE CONNECTION AT THE DURACON FLOORING END

- ① EQUUS Chevaline Epistixx SL
- ② Connecting area



Expansion Joints

- ① EQUUS Chevaline Epistixx SL
- ② EQUUS Dymonic 100 sealant



E-mail : [info@equus.nz](mailto:info@equus.nz)  
Web : [www.equus.nz](http://www.equus.nz)

PRODUCT :	Chevaline Epistixx SL Flooring on Concrete Substrate Standard Detail		
TITLE :	Typical Detail		
NUMBER :	ECESL-D14	SCALE :	NTS
DRAWN BY :	NKT	DATE :	12-Mar-2024
		REVISED :	

Equus standard details are especially drawn for use by Local Authorities, Building Contractors, Equus Applicators, Architects and design professionals. All details are drawn to assist in the development of project-specific details. Details may be modified where necessary to accommodate job-specific requirements but must be approved by Equus Industries Ltd. All components must be supplied by Equus Industries Ltd. Equus reserves the right to alter or upgrade details at any time without prior notice.