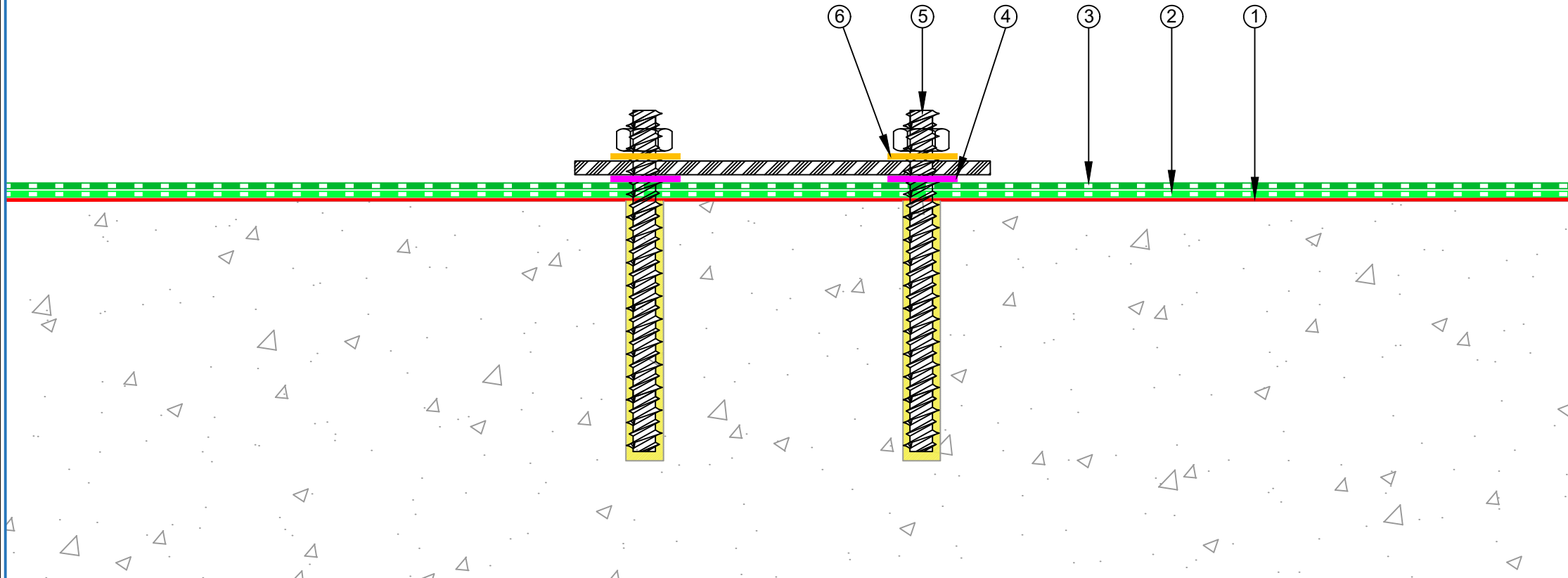


- ① EQUUS Chevaline Epistixx primer
- ② EQUUS Chevaline Epistixx Rapid Topcoat
- ③ EQUUS Chevaline Epistixx Rapid Topcoat
- ④ EQUUS Dymonic 100 sealant
- ⑤ Chemset Anchors
- ⑥ Neoprene washers



E-mail : info@equus.nz
 Web : www.equus.nz

PRODUCT :	Chevaline Epistixx Rapid Flooring on Concrete Substrate Standard Detail		
TITLE :	Standard fixing detail		
NUMBER :	ECER-D7	SCALE :	NTS
DRAWN BY :	NKT	DATE :	15-May-2023
		REVISED :	

Equus standard details are especially drawn for use by Local Authorities, Building Contractors, Equus Applicators, Architects and design professionals. All details are drawn to assist in the development of project-specific details. Details may be modified where necessary to accommodate job-specific requirements but must be approved by Equus Industries Ltd. All components must be supplied by Equus Industries Ltd. Equus reserves the right to alter or upgrade details at any time without prior notice.