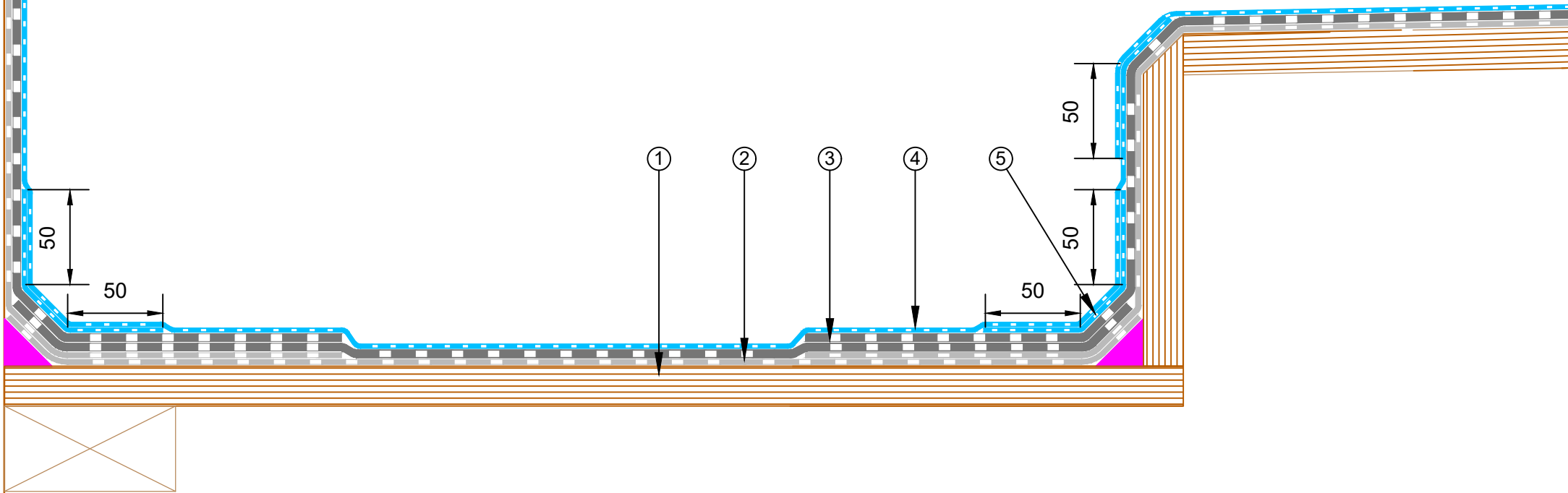


- ① Plywood Deck
- ② Existing Basesheet bitumen waterproofing membrane
- ③ Existing Capsheet bitumen waterproofing membrane
- ④ EQUUS SOPREMA Easy Flashing, waterproofing membrane system
- ⑤ EQUUS SOPREMA Easy Flashing, Reinforcement layer at the corner



E-mail : admin@equus.co.nz
 Web : www.equus.co.nz

PROJECT :	Cold Roof on Plywood Standard Detail - Easy Flashing		
TITLE :	Internal gutter parapet detail		
NUMBER :	SFCRP-D4a	SCALE :	1:3 @A4
DRAWN BY :	NKT	DATE :	08-May-2023
		REVISED :	

Equus Waterproof Membrane Details are specially drawn for use by Local Authorities, Building Contractors, Equus Applicators, Architects and design professionals. All details are drawn to assist in the development of project specific details. Details may be modified where necessary to accommodate job specific requirements but must be approved by Equus Industries Ltd. All components must be supplied by Equus Industries Ltd. Equus reserves the right to alter or upgrade details at any time without prior notice.

