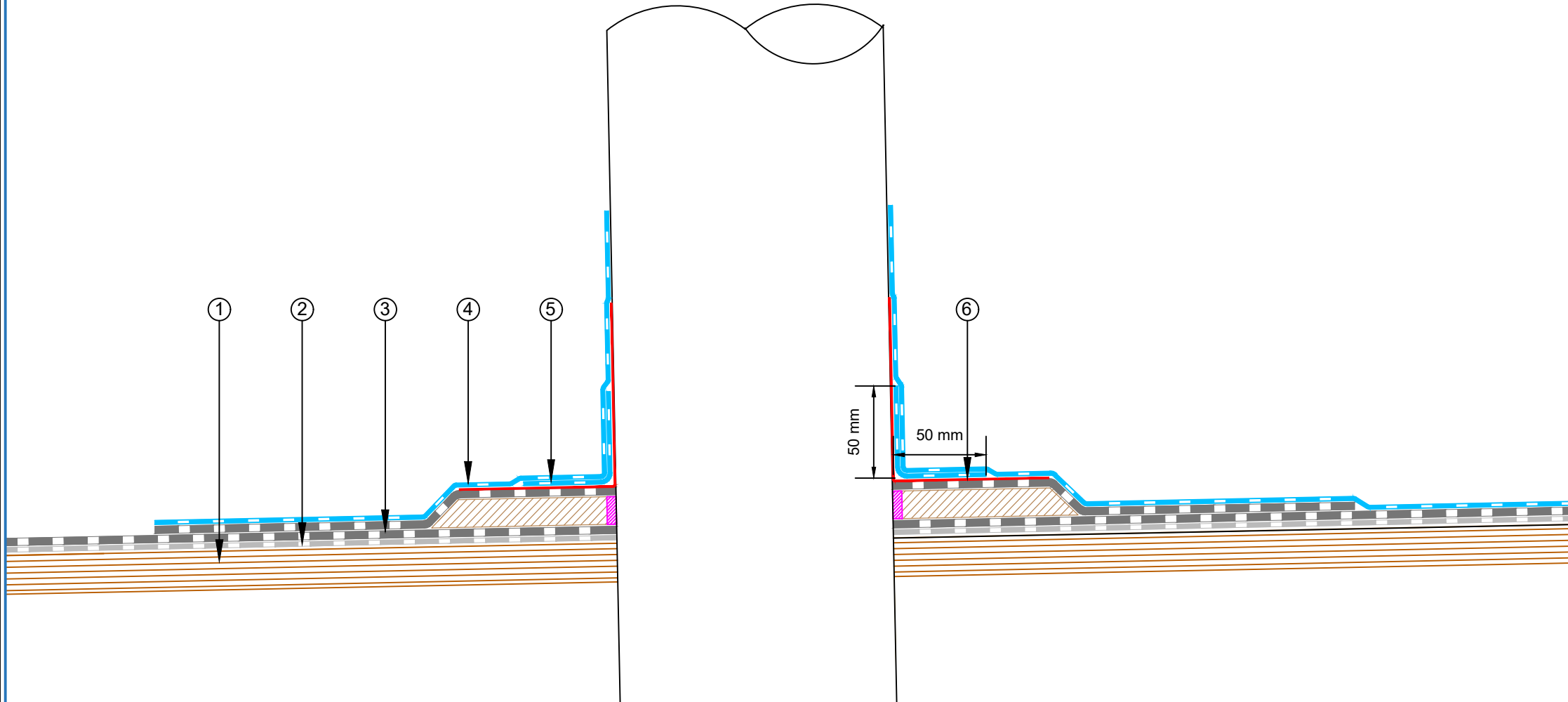


- ① Plywood Deck
- ② Existing Basesheet bitumen waterproofing membrane
- ③ Existing Capsheet bitumen waterproofing membrane
- ④ EQUUS SOPREMA Easy Flashing, waterproofing membrane system
- ⑤ EQUUS SOPREMA Easy Flashing, Reinforcement layer at the corner
- ⑥ Existing liquid waterproofing membrane



PROJECT :	Cold Roof on Plywood Standard Detail - Easy Flashing			
TITLE :	Pipe penetration detail			
NUMBER :	SFCRP-D2a	SCALE :	NTS	
DRAWN BY :	NKT	DATE :	05-May-2023	REVISED :
<p>Equus Waterproof Membrane Details are specially drawn for use by Local Authorities, Building Contractors, Equus Applicators, Architects and design professionals. All details are drawn to assist in the development of project specific details. Details may be modified where necessary to accommodate job specific requirements but must be approved by Equus Industries Ltd. All components must be supplied by Equus Industries Ltd. Equus reserves the right to alter or upgrade details at any time without prior notice.</p>				

