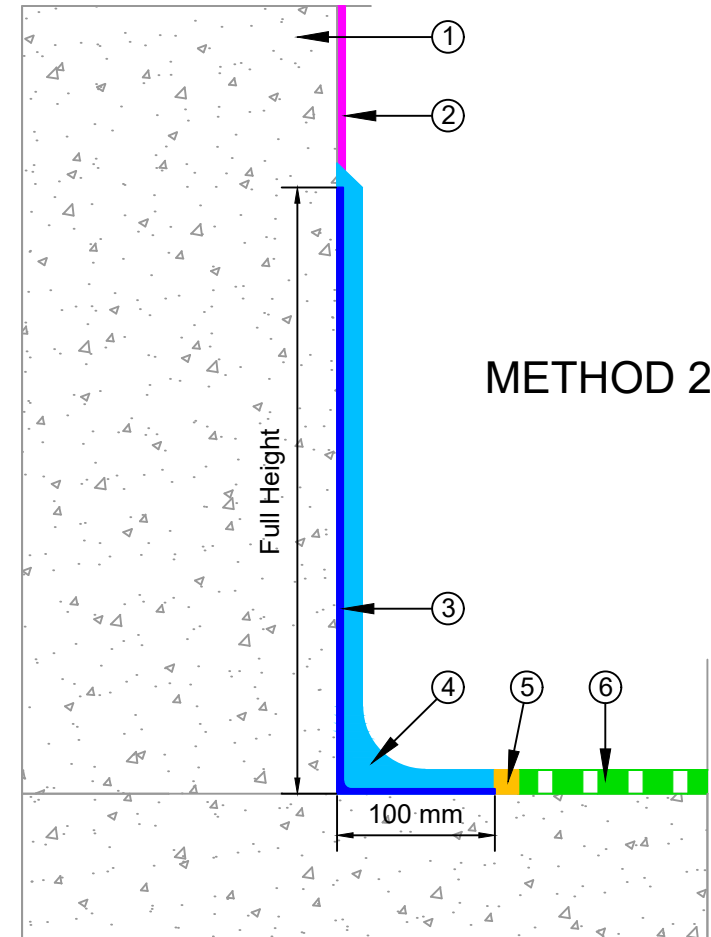
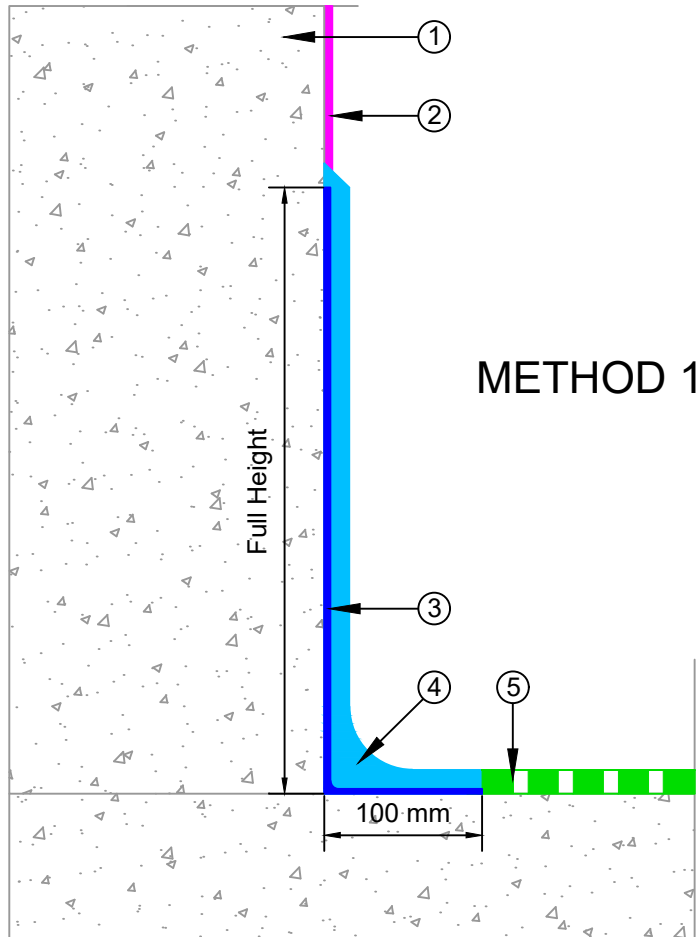


- ① Precast Concrete Wall
- ② Epistix Epoxy (wet areas) / Colourglaze (dry areas)
- ③ Matacryn Thixx flexible resin to floor / wall junction
- ④ DURACON Cove, Height = 400 mm, Radius 30-40 mm
- ⑤ DURACON Flooring

- ① Precast Concrete Wall
- ② Epistix Epoxy (wet areas) / Colourglaze (dry areas)
- ③ Matacryn Thixx flexible resin to floor / wall junction
- ④ DURACON Cove, Height = 400 mm, Radius 30-40 mm
- ⑤ Chase cold joint fill with DURACON 223 flexible resin
- ⑥ DURACON Flooring



E-mail : [info@equus.nz](mailto:info@equus.nz)  
 Web : [www.equus.nz](http://www.equus.nz)

PRODUCT :	Duracon Flooring on Concrete Substrate		
TITLE :	Flexible coves and connections to vertical surfaces detail		
NUMBER :	EDF-D9b	SCALE :	NTS
DRAWN BY :	NKT	DATE :	02-Oct-2023
		REVISED :	

Equus standard details are especially drawn for use by Local Authorities, Building Contractors, Equus Applicators, Architects and design professionals. All details are drawn to assist in the development of project-specific details. Details may be modified where necessary to accommodate job-specific requirements but must be approved by Equus Industries Ltd. All components must be supplied by Equus Industries Ltd. Equus reserves the right to alter or upgrade details at any time without prior notice.