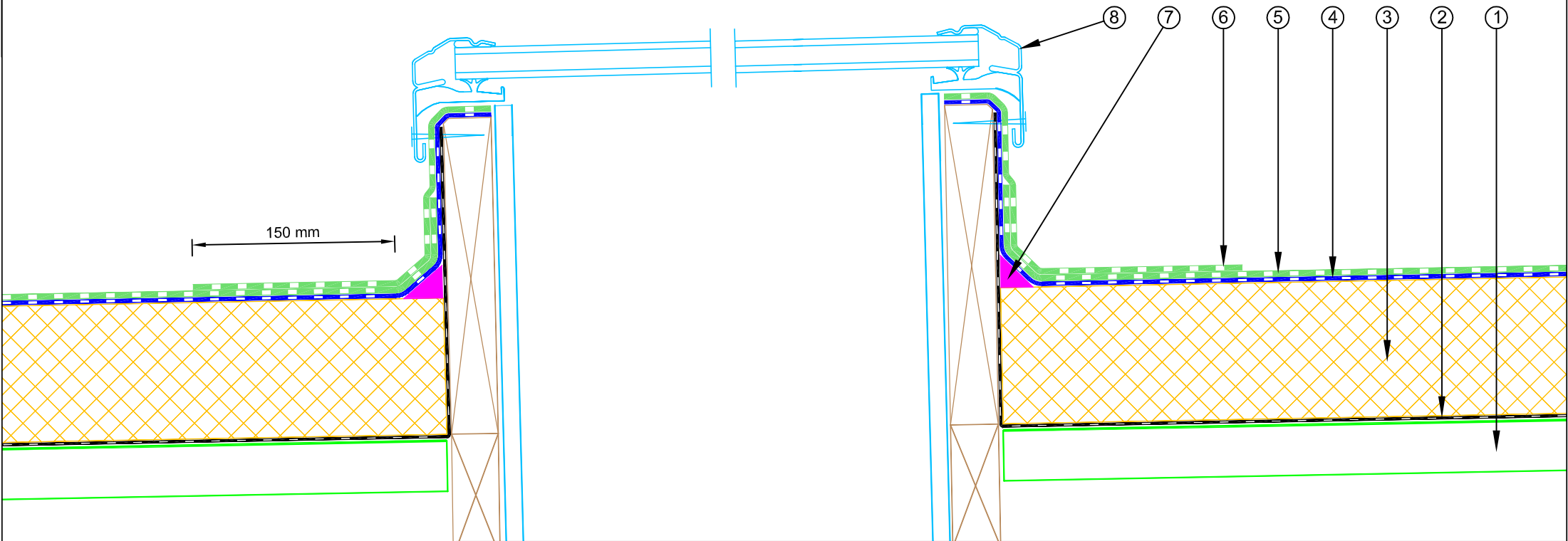


NOTE: Fastener spacing to follow De Boer project specific engineered fixing plan.

- ① New corrugated Metal Roof (0.75 gauge minimum)
- ② Equus Vapour Barrier, connected to Base sheet
- ③ Equus PIR Thermal Insulation Board
- ④ Equus/De Boer Basesheet
- ⑤ Equus/De Boer Capsheet DuO HT 4 Slates/F C180 FireCare
- ⑥ Equus/De Boer Capsheet as separate piece
- ⑦ Angle Fillet
- ⑧ Skylight Joinery




equus
E-mail : admin@equus.co.nz
Web : www.equus.co.nz

**DuOtherm Warm Roof on Steel
Tube Skylight Detail**

Drawing No: **DBDTS-D8**
Scale: **1:4 @ A4**
Drawn by: **JPR**
Date: **25/07/2017**

Equus/De Boer Waterproof Membrane Details are specially drawn for use by Local Authorities, Building Contractors, Equus Applicators, Architects and design professionals. All details are drawn to assist in the development of project specific details. Details may be modified where necessary to accommodate job specific requirements but must be approved by Equus Industries Ltd. All components must be supplied by Equus Industries Ltd. Equus Industries Ltd. reserves the right to alter or upgrade details at any time without prior notice.


de boer
waterproofing solutions
E-mail : info@deboer.be
Web : www.deboer.be