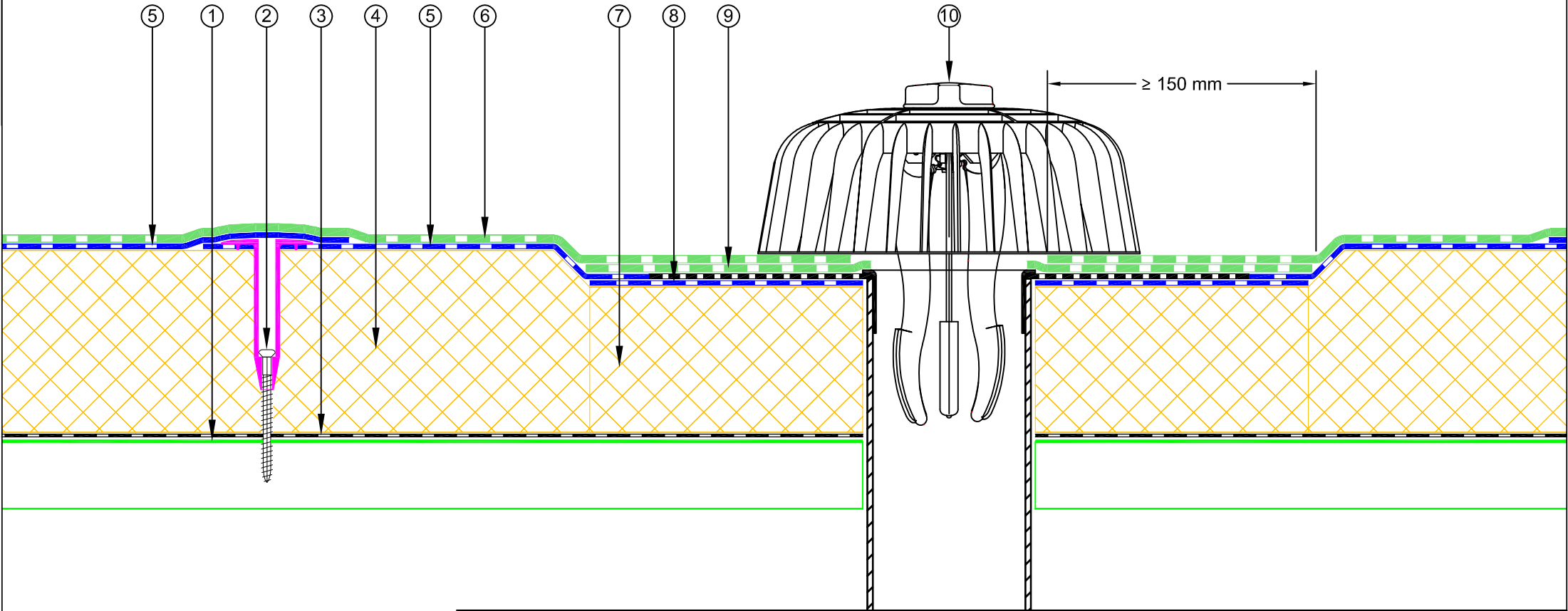


NOTE: Fastener spacing to follow De Boer project specific engineered fixing plan.

- ① New corrugated Metal Roof (0.75 gauge minimum)
- ② Equus/De Boer Fastener: RBS50 Tube + BS 6.1 Screw
- ③ Equus Vapour Barrier
- ④ Equus PIR Thermal Insulation Board
- ⑤ Equus/De Boer Basesheet
- ⑥ Equus/De Boer Capsheet DuO HT 4 Slates/F C180 FireCare
- ⑦ Equus PIR Thermal Insulation Board, 20 mm thinner
- ⑧ Equus/De Boer Basesheet, as separate piece under Drain Flange
- ⑨ Equus/De Boer Capsheet, as separate piece over Drain Flange
- ⑩ Equus/De Boer PE Roof Drain with Universal Leaf Catcher





E-mail : [admin@equus.co.nz](mailto:admin@equus.co.nz)  
Web : [www.equus.co.nz](http://www.equus.co.nz)

**DuOtherm Warm Roof on Steel  
De Boer PE Roof Drain  
with Leaf Catcher**

Equus/De Boer Waterproof Membrane Details are specially drawn for use by Local Authorities, Building Contractors, Equus Applicators, Architects and design professionals. All details are drawn to assist in the development of project specific details. Details may be modified where necessary to accommodate job specific requirements but must be approved by Equus Industries Ltd. All components must be supplied by Equus Industries Ltd. Equus Industries Ltd. reserves the right to alter or upgrade details at any time without prior notice.

Drawing No:	<b>DBDTS-D3</b>
Scale:	1:3 @ A4
Drawn by:	JPR
Date:	12/07/2016



**de boer**  
waterproofing solutions  
E-mail : [info@deboer.be](mailto:info@deboer.be)  
Web : [www.deboer.be](http://www.deboer.be)