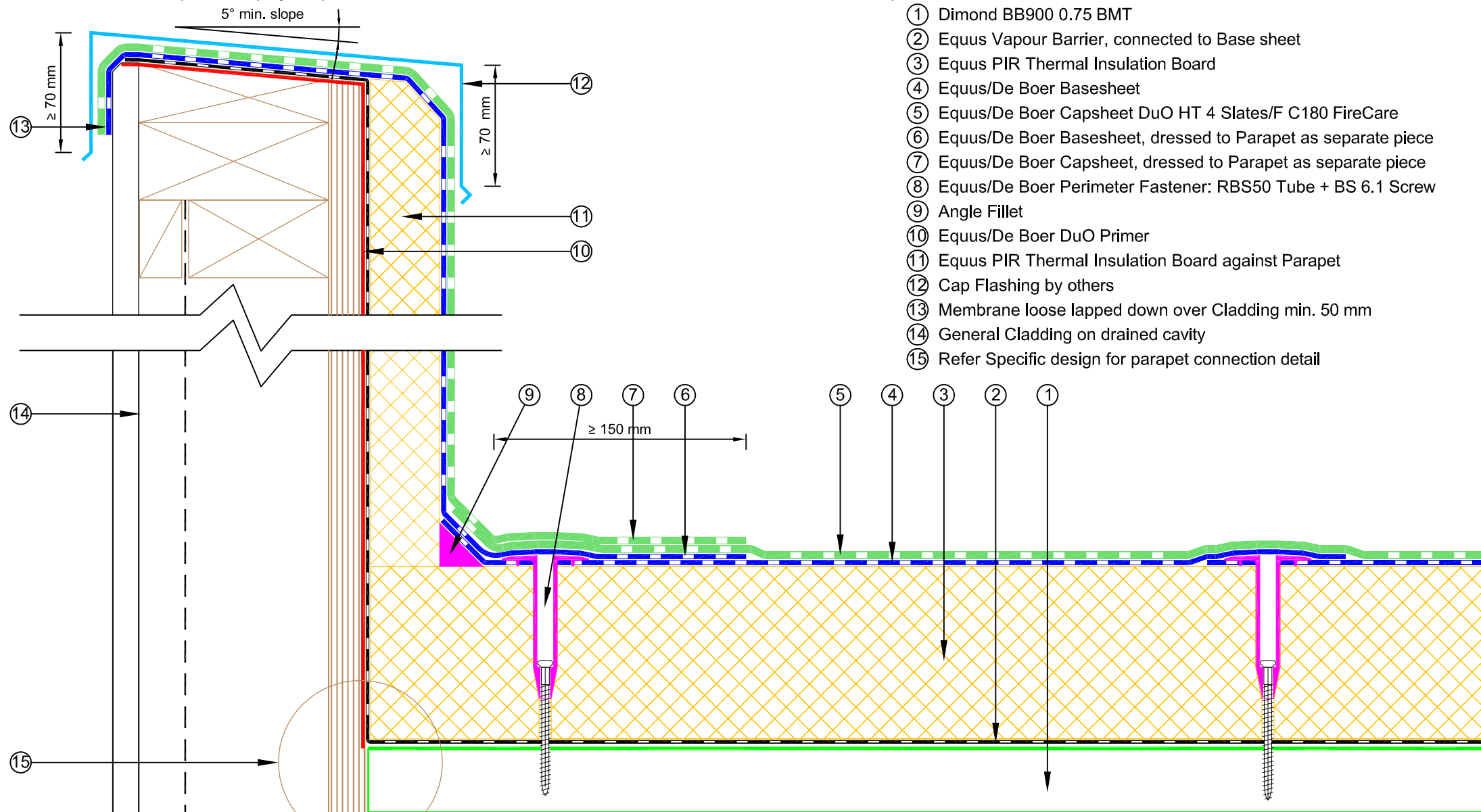


NOTE: Fastener spacing to follow De Boer project specific engineered fixing plan.

NOTE: Contact Equus for a project specific detail if differential movement between roof deck and wall is to be expected.



- ① Dimond BB900 0.75 BMT
- ② Equus Vapour Barrier, connected to Base sheet
- ③ Equus PIR Thermal Insulation Board
- ④ Equus/De Boer Basesheet
- ⑤ Equus/De Boer Capsheet DuO HT 4 Slates/F C180 FireCare
- ⑥ Equus/De Boer Basesheet, dressed to Parapet as separate piece
- ⑦ Equus/De Boer Capsheet, dressed to Parapet as separate piece
- ⑧ Equus/De Boer Perimeter Fastener: RBS50 Tube + BS 6.1 Screw
- ⑨ Angle Fillet
- ⑩ Equus/De Boer DuO Primer
- ⑪ Equus PIR Thermal Insulation Board against Parapet
- ⑫ Cap Flashing by others
- ⑬ Membrane loose lapped down over Cladding min. 50 mm
- ⑭ General Cladding on drained cavity
- ⑮ Refer Specific design for parapet connection detail



E-mail : [admin@equus.co.nz](mailto:admin@equus.co.nz)  
Web : [www.equus.co.nz](http://www.equus.co.nz)

## DuOtherm Warm Roof on Steel Parapet Detail

Equus/De Boer Waterproof Membrane Details are specially drawn for use by Local Authorities, Building Contractors, Equus Applicators, Architects and design professionals. All details are drawn to assist in the development of project specific details. Details may be modified where necessary to accommodate job specific requirements but must be approved by Equus Industries Ltd. All components must be supplied by Equus Industries Ltd. Equus Industries Ltd. reserves the right to alter or upgrade details at any time without prior notice.

Drawing No: **DBDTS-D1b**

Scale: **1:3 @ A4**

Drawn by: **JPR**

Date: **17/05/2017**



**de boer**  
waterproofing solutions

E-mail : [info@deboer.be](mailto:info@deboer.be)  
Web : [www.deboer.be](http://www.deboer.be)