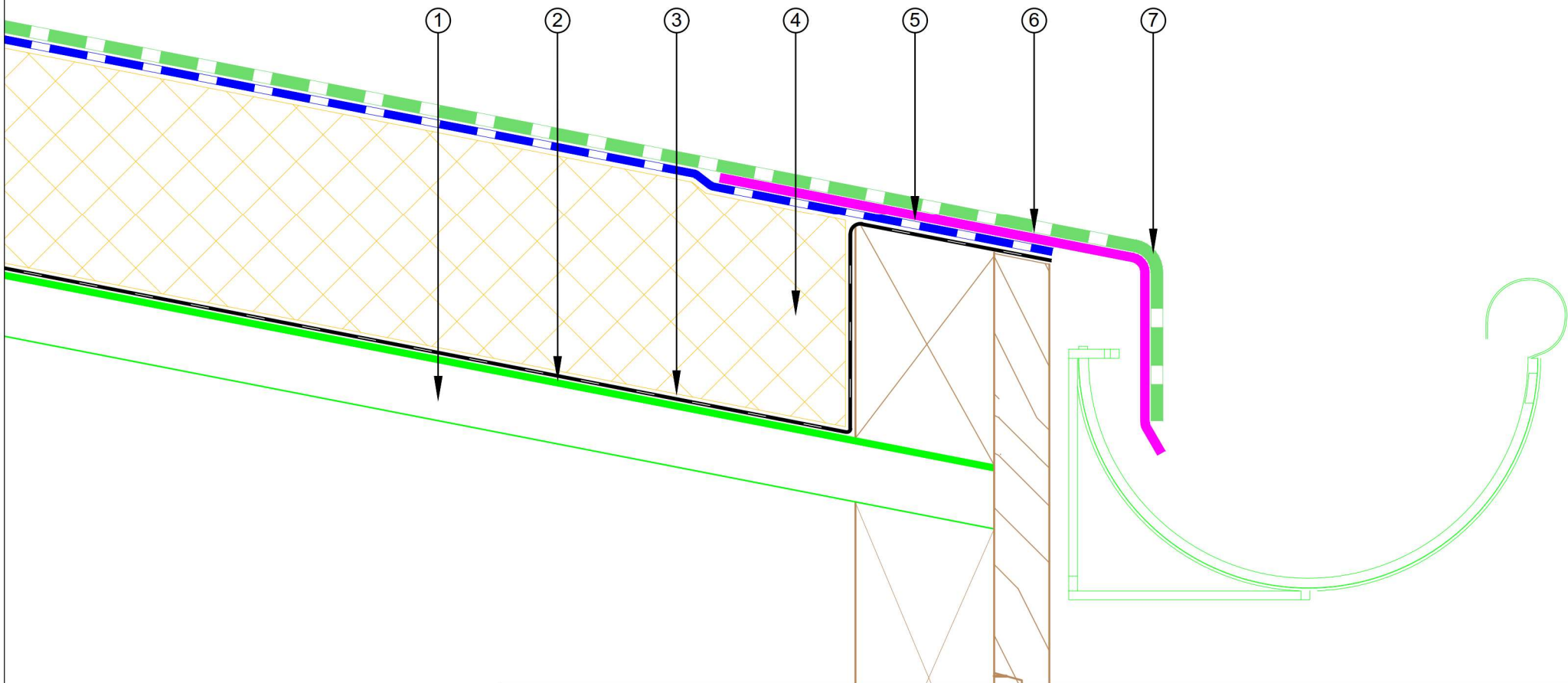


- ① New corrugated Metal Roof (0.75 gauge minimum)
- ② No primer
- ③ Equus Soprema Vapour Barrier
- ④ Equus PIR Thermal Insulation Board
- ⑤ Equus Soprema Basesheet
- ⑥ Aluminium Flashing treated with Equus Soprema 'Spray & Go' Primer
- ⑦ Equus Soprema cap sheet DuO HT 4 Slates/F C180 FireCare



E-mail : [admin@equus.co.nz](mailto:admin@equus.co.nz)  
Web : [www.equus.co.nz](http://www.equus.co.nz)

## DuOtherm Warm Roof on Steel Connection to External Gutter

Equus Soprema Waterproof Membrane Details are specially drawn for use by Local Authorities, Building Contractors, Equus Applicators, Architects and design professionals. All details are drawn to assist in the development of project specific details. Details may be modified where necessary to accommodate job specific requirements but must be approved by Equus Industries Ltd. All components must be supplied by Equus Industries Ltd. Equus Industries Ltd. reserves the right to alter or upgrade details at any time without prior notice.

Drawing No: **DBDTS-D14**

Scale: 1:2 @ A4

Drawn by: NKT

Date: 16/11/2017

**Du**  <sup>®</sup>  
**High tech**