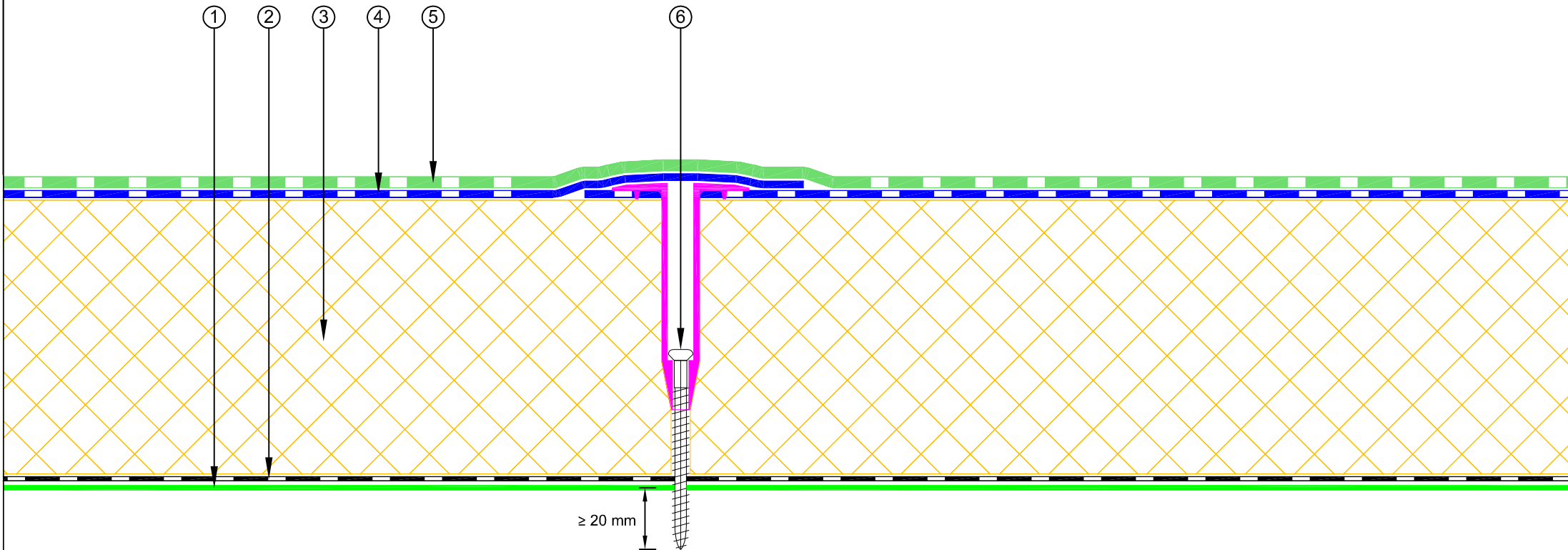


NOTE: Fastener spacing to follow De Boer project specific engineered fixing plan.

- ① New corrugated Metal Roof (0.75 gauge minimum)
- ② Equus Vapour Barrier
- ③ Equus PIR Thermal Insulation Board
- ④ Equus/De Boer Basesheet
- ⑤ Equus/De Boer Capsheet DuO HT 4 Slates/F C180 FireCare
- ⑥ Equus/De Boer Fastener: RBS50 Tube + BS 6.1 Screw




**equus**  
E-mail : [admin@equus.co.nz](mailto:admin@equus.co.nz)  
Web : [www.equus.co.nz](http://www.equus.co.nz)

### DuOtherm Warm Roof on Steel Roof Built Up

Equus/De Boer Waterproof Membrane Details are specially drawn for use by Local Authorities, Building Contractors, Equus Applicators, Architects and design professionals. All details are drawn to assist in the development of project specific details. Details may be modified where necessary to accommodate job specific requirements but must be approved by Equus Industries Ltd. All components must be supplied by Equus Industries Ltd. Equus Industries Ltd. reserves the right to alter or upgrade details at any time without prior notice.

Drawing No: **DBDTS-D0**  
Scale: 1:2 @ A4  
Drawn by: JPR  
Date: 14/07/2016



**de boer**  
waterproofing solutions  
E-mail : [info@deboer.be](mailto:info@deboer.be)  
Web : [www.deboer.be](http://www.deboer.be)