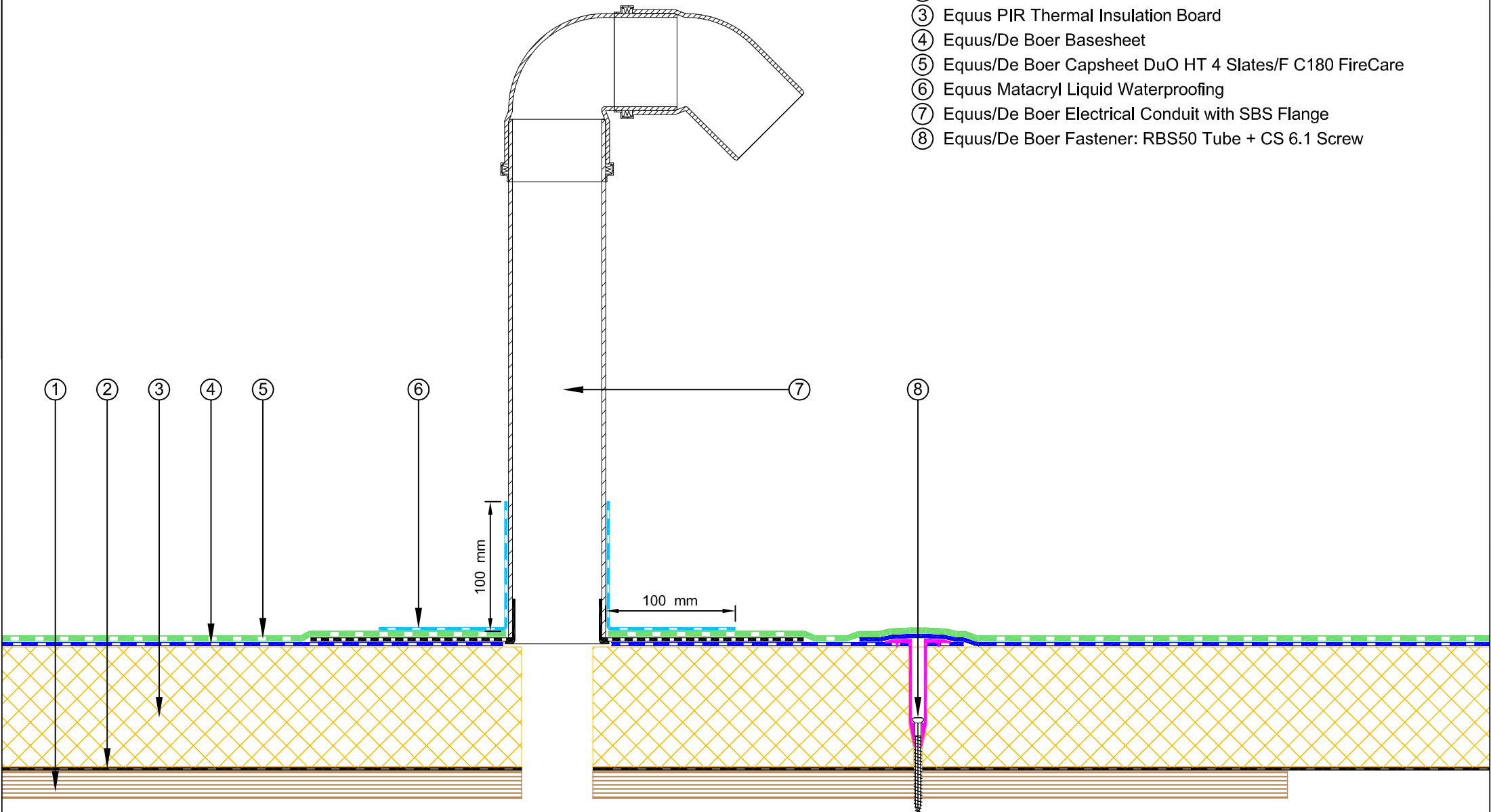


NOTE: Fastener spacing to follow De Boer project specific engineered fixing plan.

- ① Concrete Roof Slab laid to Fall
- ② Equus Vapour Barrier
- ③ Equus PIR Thermal Insulation Board
- ④ Equus/De Boer Basesheet
- ⑤ Equus/De Boer Capsheet DuO HT 4 Slates/F C180 FireCare
- ⑥ Equus Matacryn Liquid Waterproofing
- ⑦ Equus/De Boer Electrical Conduit with SBS Flange
- ⑧ Equus/De Boer Fastener: RBS50 Tube + CS 6.1 Screw




E-mail : admin@equus.co.nz
Web : www.equus.co.nz

**DuOtherm Warm Roof on Plywood
De Boer Electrical Conduit**

Drawing No:	DBDTP-D6
Scale:	1:4 @ A4
Drawn by:	JPR
Date:	21/10/2016

Equus/De Boer Waterproof Membrane Details are specially drawn for use by Local Authorities, Building Contractors, Equus Applicators, Architects and design professionals. All details are drawn to assist in the development of project specific details. Details may be modified where necessary to accomodate job specific requirements but must be approved by Equus Industries Ltd. All components must be supplied by Equus Industries Ltd. Equus Industries Ltd. reserves the right to alter or upgrade details at any time without prior notice.


E-mail : info@deboer.be
Web : www.deboer.be