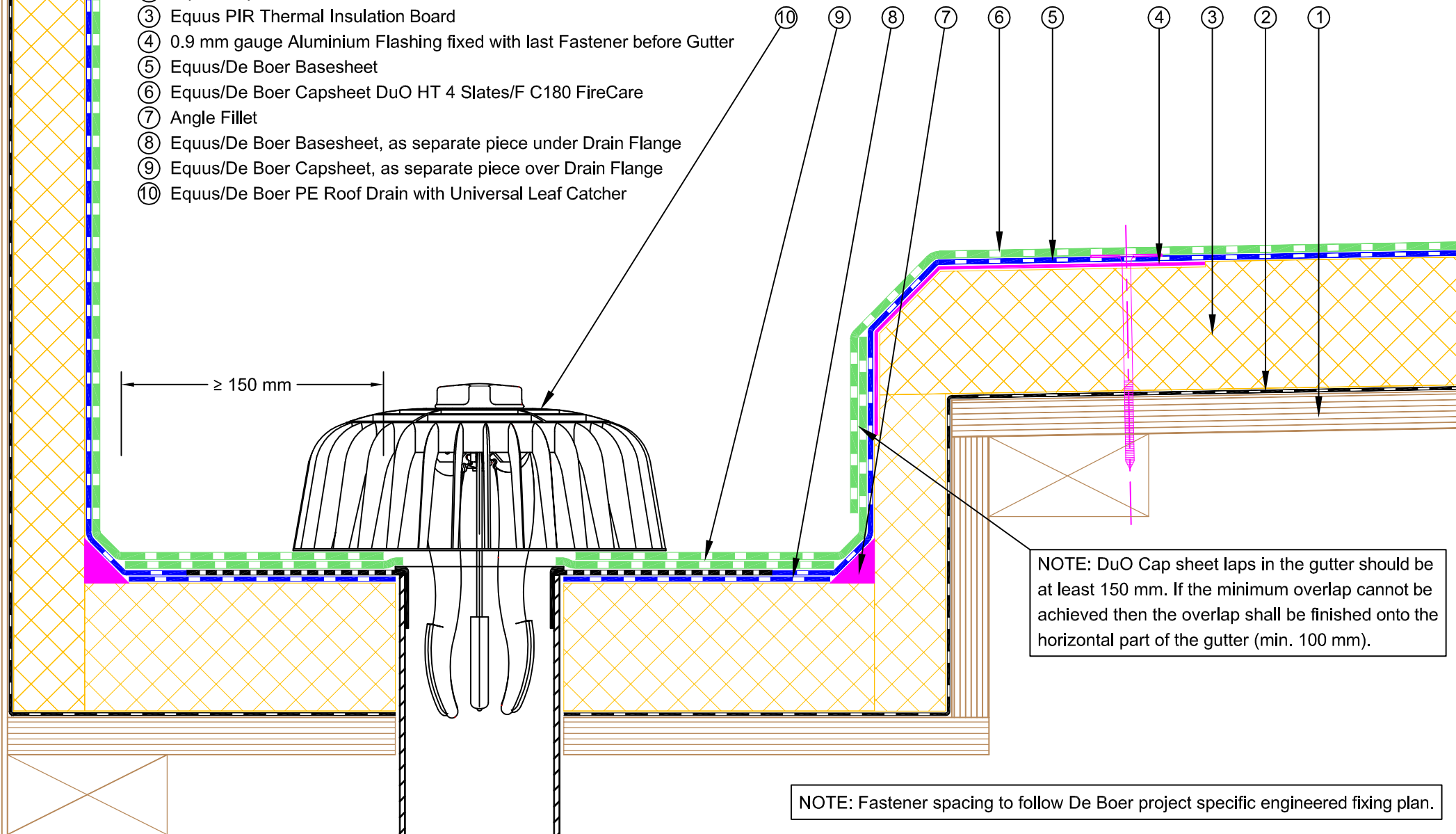


- ① Plywood Deck
- ② Equus Vapour Barrier
- ③ Equus PIR Thermal Insulation Board
- ④ 0.9 mm gauge Aluminium Flashing fixed with last Fastener before Gutter
- ⑤ Equus/De Boer Basesheet
- ⑥ Equus/De Boer Capsheet DuO HT 4 Slates/F C180 FireCare
- ⑦ Angle Fillet
- ⑧ Equus/De Boer Basesheet, as separate piece under Drain Flange
- ⑨ Equus/De Boer Capsheet, as separate piece over Drain Flange
- ⑩ Equus/De Boer PE Roof Drain with Universal Leaf Catcher



NOTE: DuO Cap sheet laps in the gutter should be at least 150 mm. If the minimum overlap cannot be achieved then the overlap shall be finished onto the horizontal part of the gutter (min. 100 mm).

NOTE: Fastener spacing to follow De Boer project specific engineered fixing plan.