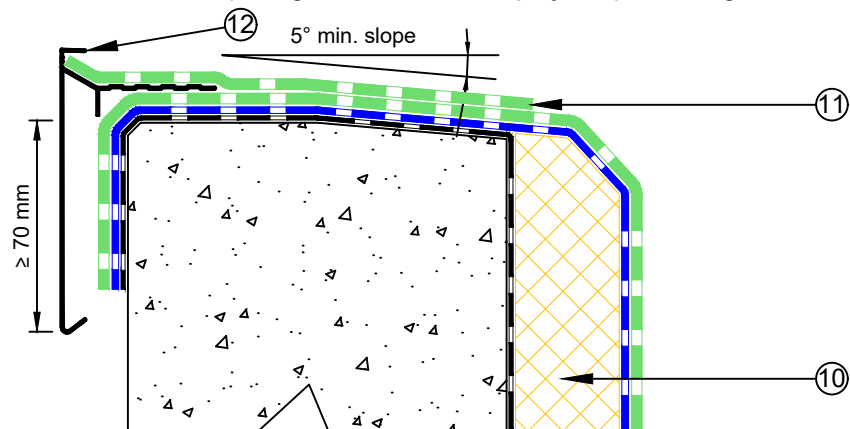
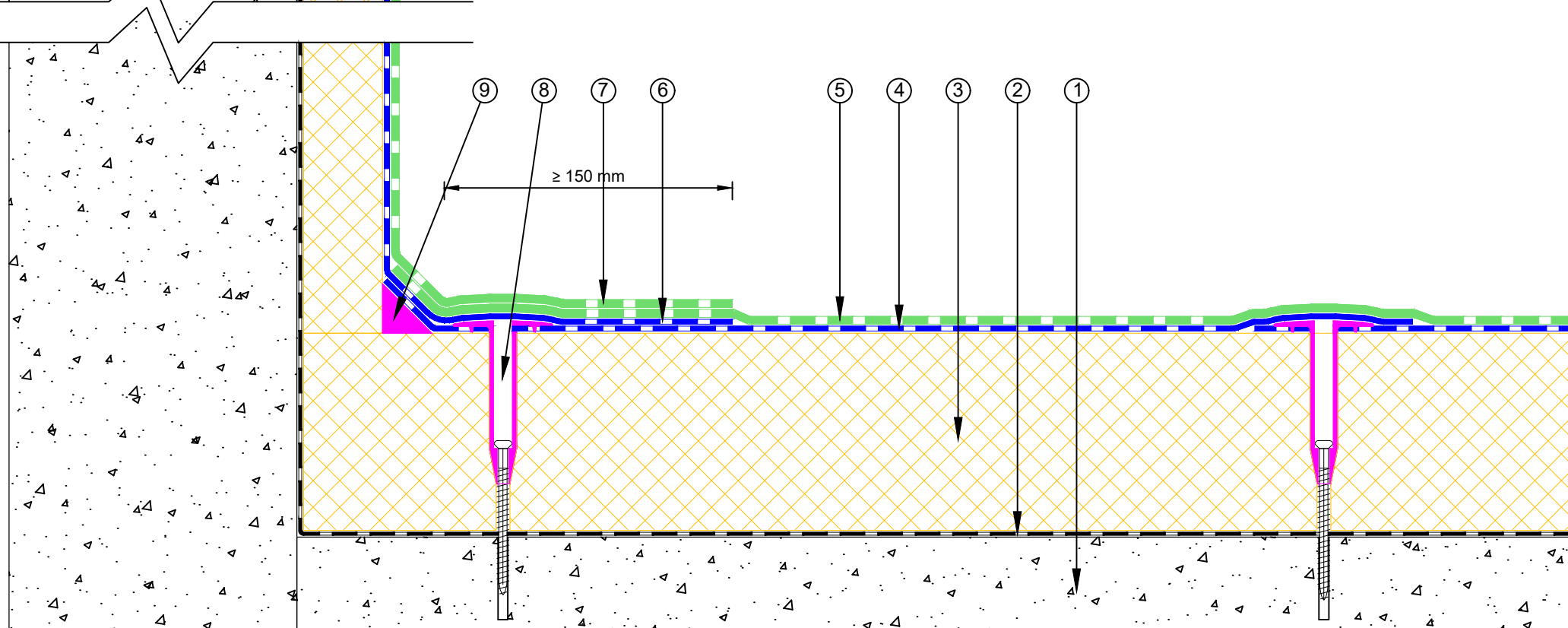


NOTE: Fastener spacing to follow De Boer project specific engineered fixing plan.



- ① Concrete Roof Slab laid to Fall
- ② Equus Vapour Barrier, connected to Base sheet
- ③ Equus PIR Thermal Insulation Board
- ④ Equus/De Boer Basesheet
- ⑤ Equus/De Boer Capsheet DuO HT 4 Slates/F C180 FireCare
- ⑥ Equus/De Boer Basesheet, dressed to Parapet as separate piece
- ⑦ Equus/De Boer Capsheet, dressed to Parapet as separate piece
- ⑧ Equus/De Boer Perimeter Fastener: RBS50 Tube + CS 6.1 Screw
- ⑨ Angle Fillet
- ⑩ Equus PIR Thermal Insulation Board against Parapet
- ⑪ Equus/De Boer Capsheet, as separate piece over Roof Edge Profile
- ⑫ Equus/De Boer Roof Edge Profile



E-mail : admin@equus.co.nz
Web : www.equus.co.nz

DuOtherm Warm Roof on Concrete Parapet Detail with roof edge profile

Equus/De Boer Waterproof Membrane Details are specially drawn for use by Local Authorities, Building Contractors, Equus Applicators, Architects and design professionals. All details are drawn to assist in the development of project specific details. Details may be modified where necessary to accommodate job specific requirements but must be approved by Equus Industries Ltd. All components must be supplied by Equus Industries Ltd. Equus Industries Ltd. reserves the right to alter or upgrade details at any time without prior notice.

Drawing No: **DBDTC-D1.1**

Scale: 1:3 @ A4

Drawn by: NKT

Date: 03/10/2017



de boer
waterproofing solutions

E-mail : info@deboer.be
Web : www.deboer.be