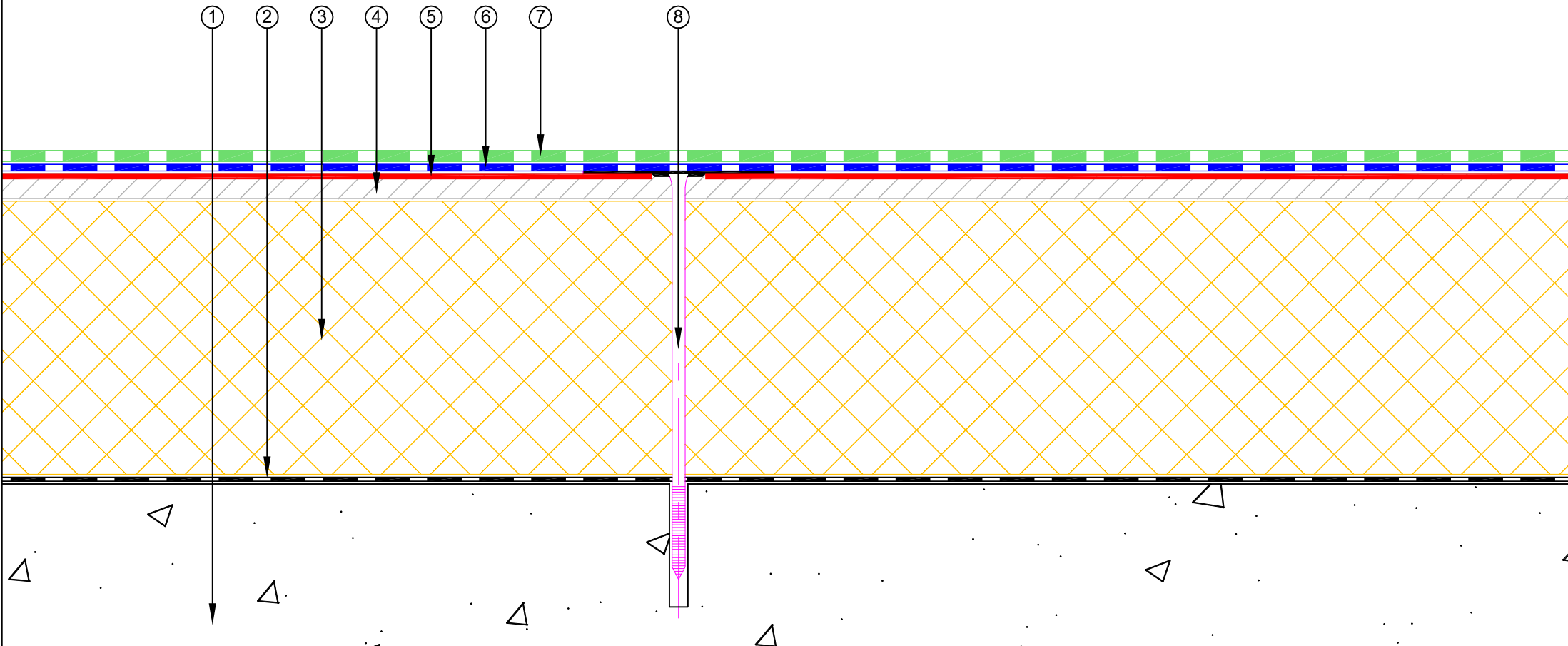


NOTE: Fastener spacing to follow De Boer project specific engineered fixing plan.

- ① Concrete Roof Slab laid to Fall
- ② Equus Vapour Barrier
- ③ Equus PIR Thermal Insulation Board
- ④ Equus/Dexcell Roof Board
- ⑤ Equus/De Boer DuO Primer, diluted 1:1 with White Spirit
- ⑥ Equus/De Boer Basesheet
- ⑦ Equus/De Boer Capsheet DuO HT 4 Slates/F C180 FireCare
- ⑧ Equus/De Boer Fastener: SP-70-S4 + CS 6.1 Screw




**equus**  
E-mail : [admin@equus.co.nz](mailto:admin@equus.co.nz)  
Web : [www.equus.co.nz](http://www.equus.co.nz)

**DuOtherm Warm Roof on Concrete  
Roof Built Up with Roof Board**

Equus/De Boer Waterproof Membrane Details are specially drawn for use by Local Authorities, Building Contractors, Equus Applicators, Architects and design professionals. All details are drawn to assist in the development of project specific details. Details may be modified where necessary to accommodate job specific requirements but must be approved by Equus Industries Ltd. All components must be supplied by Equus Industries Ltd. Equus Industries Ltd. reserves the right to alter or upgrade details at any time without prior notice.

Drawing No: **DBDTC-D0b**  
Scale: 1:2 @ A4  
Drawn by: JPR  
Date: 06/03/2017



**de boer**  
waterproofing solutions  
E-mail : [info@deboer.be](mailto:info@deboer.be)  
Web : [www.deboer.be](http://www.deboer.be)