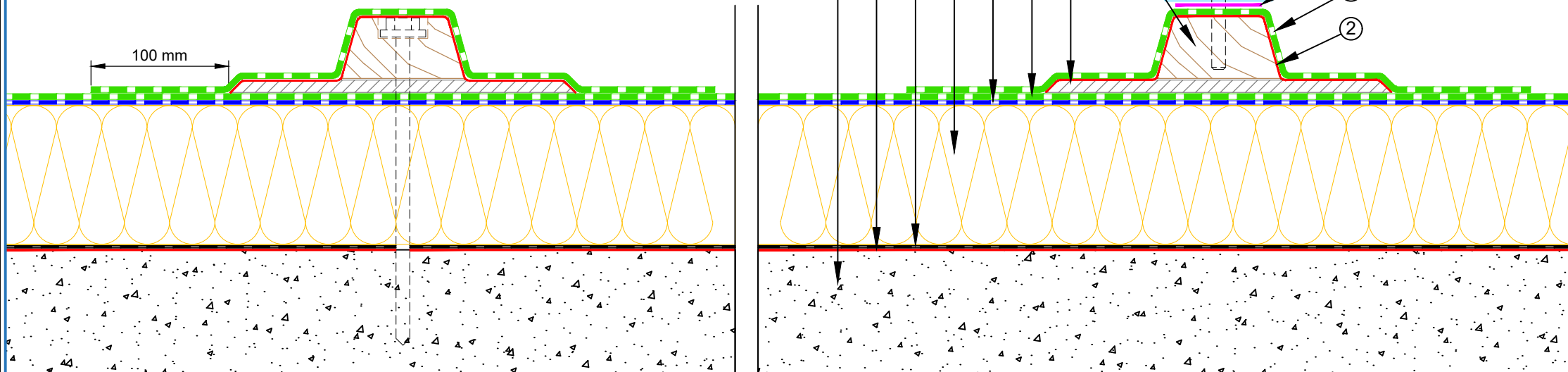


- ① Concrete Roof Slab laid to Fall
- ② EQUUS Sopradere Quick or Aquadere bitumen primer
- ③ EQUUS Debotack2.5T/F C175 or Colphene 3000 Vapour Barrier
- ④ EQUUS SOPRAROCK mineral wool thermal insulation
- ⑤ EQUUS DeboPlast or DeboFlex base sheet
- ⑥ EQUUS DuO High Tech 4 Slates/F C180 Firecare cap sheet
- ⑦ EQUUS Permabase Dek roof cover board
- ⑧ Timber Roof Batten
- ⑨ EQUUS cap sheet as separate piece over Plywood Plinth
- ⑩ EPDM Washer under Screwhead
- ⑪ Roof Equipment

STEP 2: Fixing of the Equipment

STEP 1: Fixing of the batten



E-mail : admin@equus.co.nz
 Web : www.equus.co.nz

PROJECT :	Warm Roof on Concrete Standard Detail		
TITLE :	Roof Equipment Support Batten (Mineral wool insulation)		
NUMBER :	SDWRC-D7b	SCALE :	1 : 4
DRAWN BY :	NKT	DATE :	31-Aug-2022
		REVISED :	

Equus Waterproof Membrane Details are specially drawn for use by Local Authorities, Building Contractors, Equus Applicators, Architects and design professionals. All details are drawn to assist in the development of project specific details. Details may be modified where necessary to accommodate job specific requirements but must be approved by Equus Industries Ltd. All components must be supplied by Equus Industries Ltd. Equus reserves the right to alter or upgrade details at any time without prior notice.

