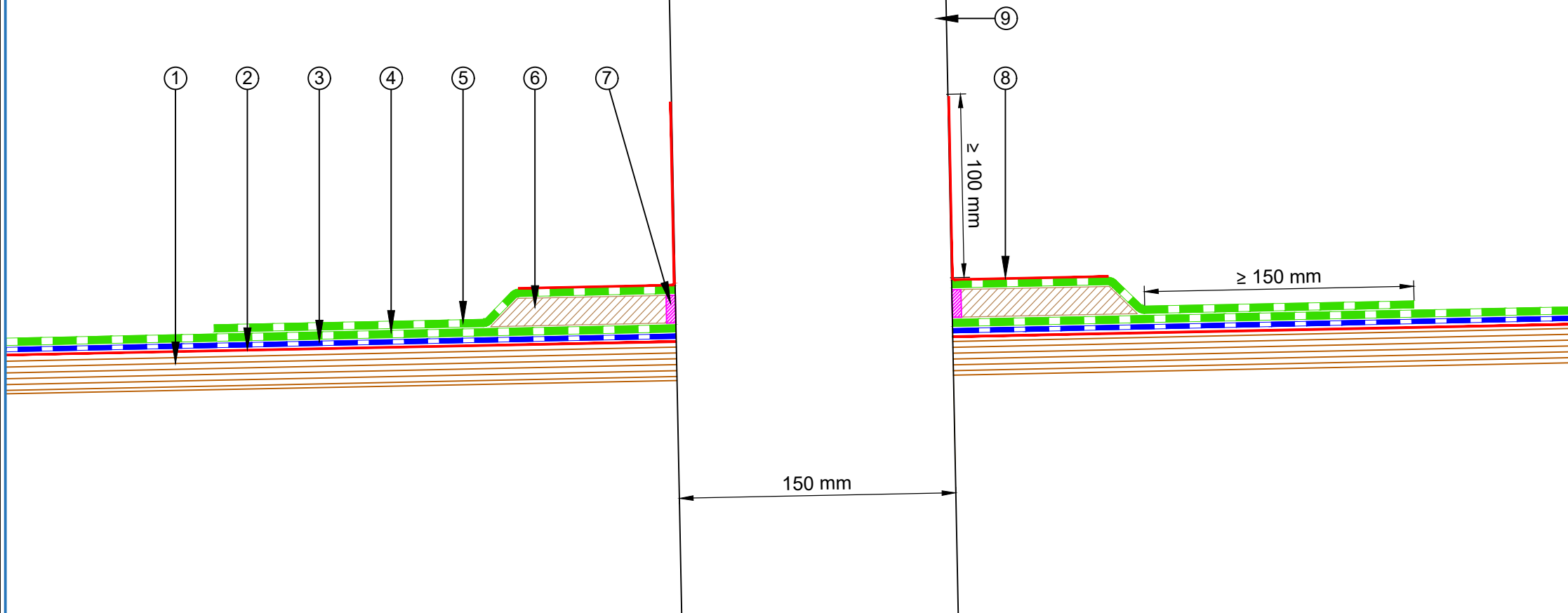


- ① Plywood Deck
- ② EQUUS Sopradere Quick or Aquadere bitumen primer
- ③ EQUUS DeboPlast, DeboFlex or Debotack 2.5 T/F C175 base sheet
- ④ EQUUS DuO High Tech 4 Slates/F C180 Firecare cap sheet
- ⑤ EQUUS cap sheet as separate piece over Plywood Plinch
- ⑥ Plywood Plinth
- ⑦ EQUUS Alsan Mastic 2200 bitumen sealant
- ⑧ EQUUS Alsan Flashing (Quadro) or EQUUS Matacryn with STC top coat
- ⑨ PVC Pipe Penetration



PROJECT :	Cold Roof on Plywood Standard Detail -DuO				
TITLE :	PVC Pipe Penetration				
NUMBER :	SDCRP-D4c			SCALE :	1:3
DRAWN BY :	NKT	DATE :	06-Apr-2023	REVISED :	

EQUUS Waterproof Membrane Details are specially drawn for use by Local Authorities, Building Contractors, Equus Applicators, Architects and design professionals. All details are drawn to assist in the development of project specific details. Details may be modified where necessary to accommodate job specific requirements but must be approved by Equus Industries Ltd. All components must be supplied by Equus Industries Ltd. Equus reserves the right to alter or upgrade details at any time without prior notice.

