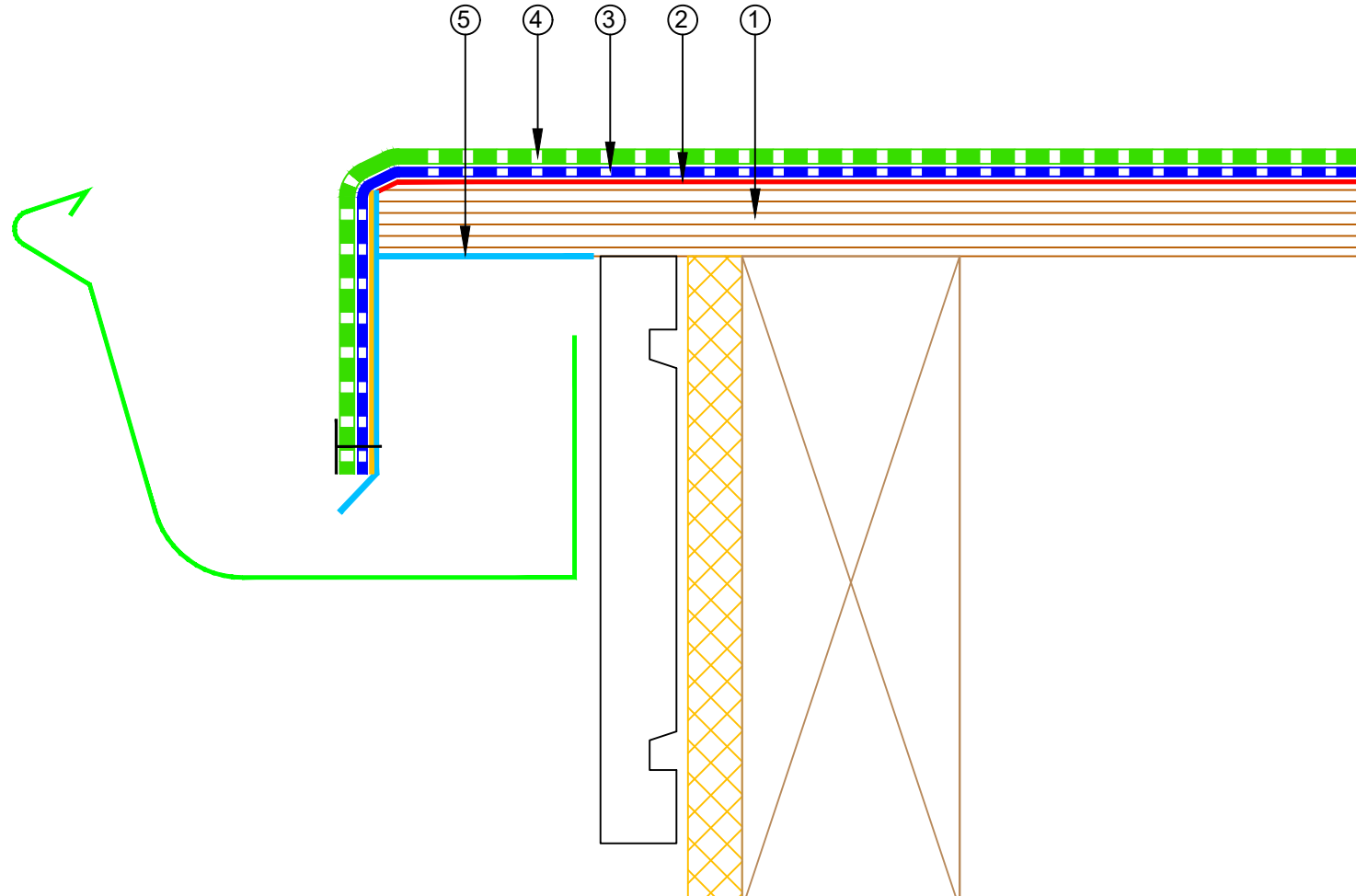


- ① Plywood Deck
- ② EQUUS Sopradere Quick or Aquadere bitumen primer
- ③ EQUUS DeboTack 2.5 T/F C175, base sheet
- ④ EQUUS DuO High Tech 4 Slates/F C180 Firecare cap sheet
- ⑤ M.A. Drip edge flashing treated with SOPRASPRAY



E-mail : admin@equus.co.nz
 Web : www.equus.co.nz

PROJECT :	Cold Roof on Plywood Standard Detail - DuO				
TITLE :	Drip Edge Detail				
NUMBER :	SDCRP-D23a			SCALE :	NTS
DRAWN BY :	NKT	DATE :	04-Apr-2023	REVISED :	

Equus Waterproof Membrane Details are specially drawn for use by Local Authorities, Building Contractors, Equus Applicators, Architects and design professionals. All details are drawn to assist in the development of project specific details. Details may be modified where necessary to accommodate job specific requirements but must be approved by Equus Industries Ltd. All components must be supplied by Equus Industries Ltd. Equus reserves the right to alter or upgrade details at any time without prior notice.



AUTHORISED DISTRIBUTOR
SOPREMA