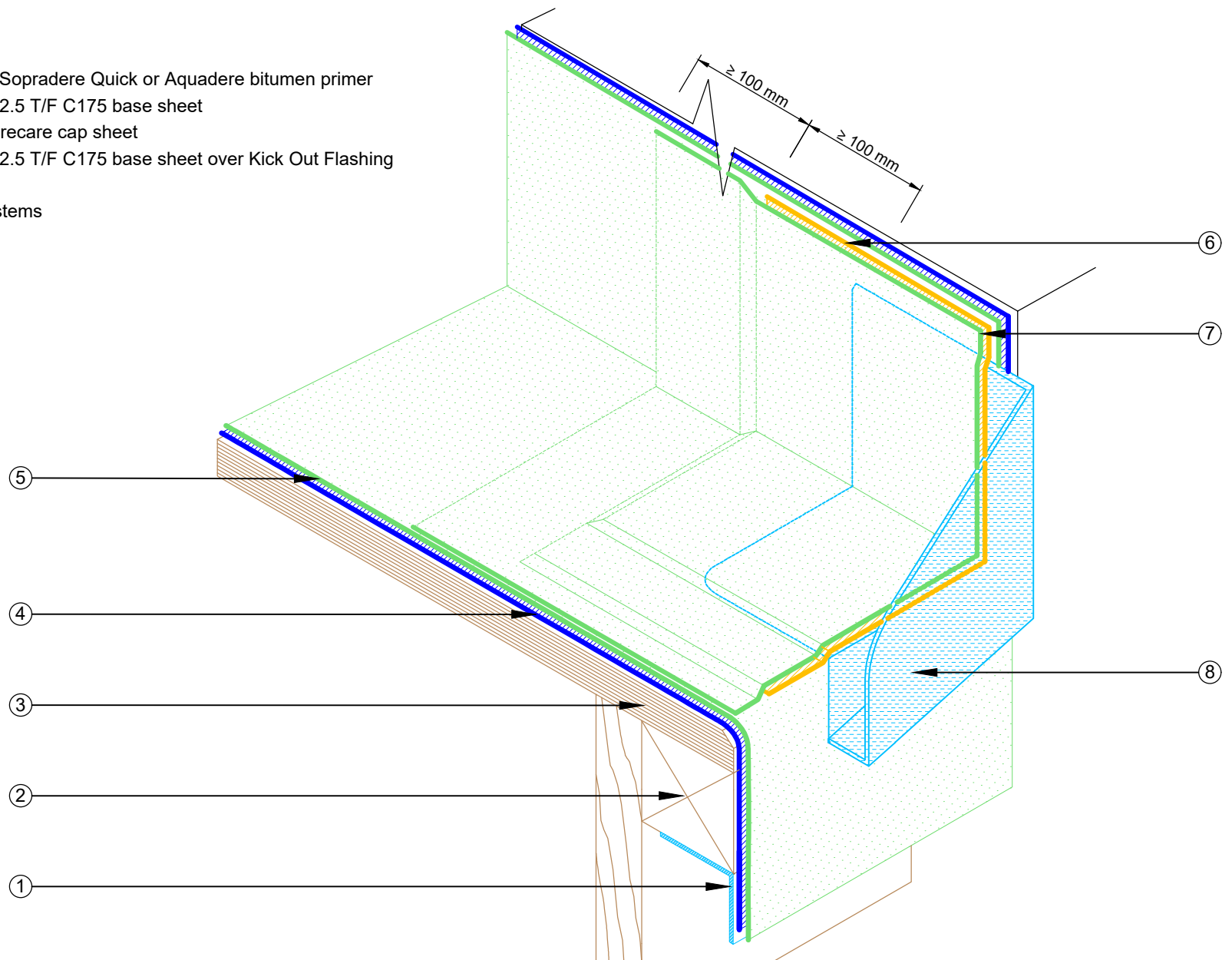


- ① Aluminium Angle Profile 25 x 25 mm
- ② Primered Timber Blocking
- ③ Primered Plywood Roof Deck with EQUUS Sopradere Quick or Aquadere bitumen primer
- ④ EQUUS DeboPlast, DeboFlex or Debotack 2.5 T/F C175 base sheet
- ⑤ EQUUS DuO High Tech 4 Slates/F C180 Firecare cap sheet
- ⑥ EQUUS DeboPlast, DeboFlex or Debotack 2.5 T/F C175 base sheet over Kick Out Flashing
- ⑦ EQUUS Cap sheet over Kick Out Flashing
- ⑧ Kick Out Flashing between double layer systems



PROJECT :	Cold Roof on Plywood Standard Detail				
TITLE :	Kick Out Flashing Detail				
NUMBER :	SDCRP-D16a			SCALE :	NTS
DRAWN BY :	NKT	DATE :	04-Dec-2021	REVISED :	

Equus Waterproof Membrane Details are specially drawn for use by Local Authorities, Building Contractors, Equus Applicators, Architects and design professionals. All details are drawn to assist in the development of project specific details. Details may be modified where necessary to accommodate job specific requirements but must be approved by Equus Industries Ltd. All components must be supplied by Equus Industries Ltd. Equus reserves the right to alter or upgrade details at any time without prior notice.

