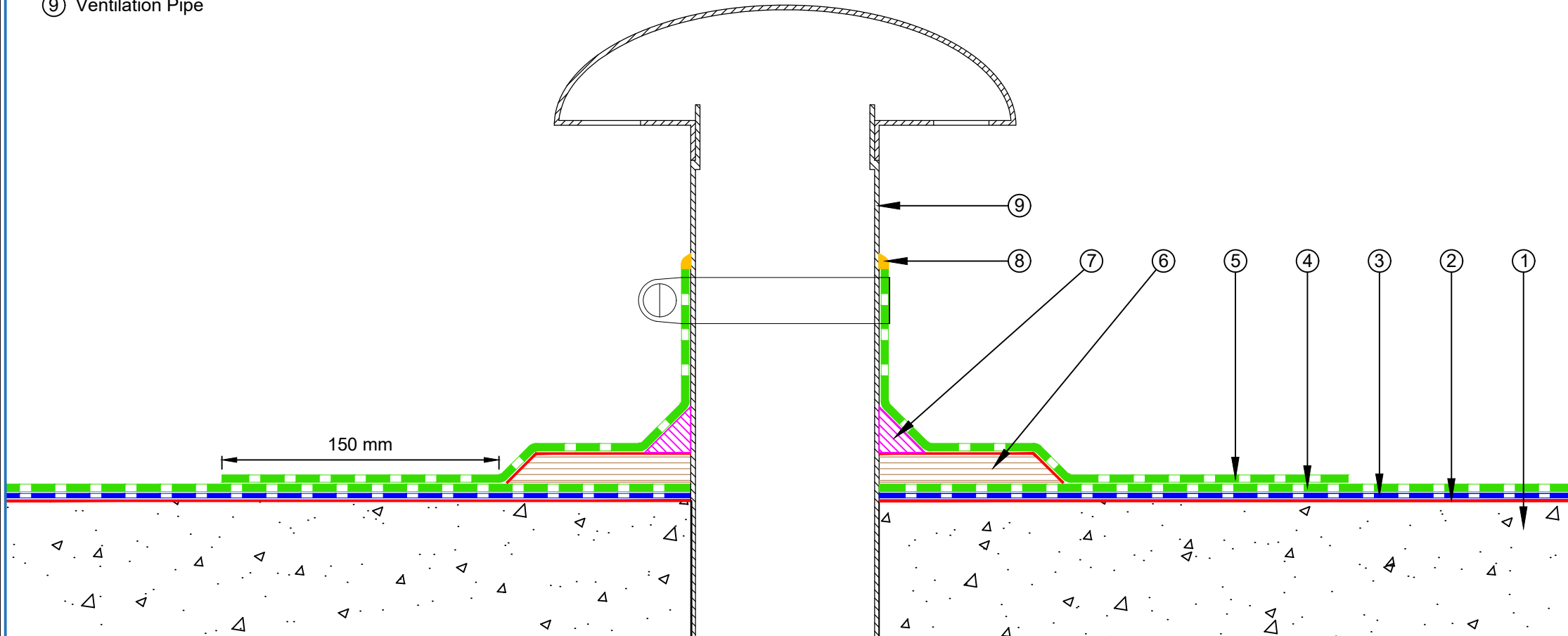


- ① Concrete Roof slab laid to fall
- ② EQUUS Sopradere Quick or Aquadere bitumen primer
- ③ EQUUS Debotack 2.5 T/F C175 Aero base sheet (partially self-adhered)
- ④ EQUUS DuO High Tech 4 Slates/F C180 Firecare cap sheet
- ⑤ EQUUS Capsheet as separate piece over Plywood Plinth
- ⑥ Plywood Plinth
- ⑦ EQUUS bitumen fillet or approved alternative
- ⑧ EQUUS Alsan Mastic 2200 bitumen sealant
- ⑨ Ventilation Pipe



PROJECT :	Cold Roof on Concrete Standard Detail		
TITLE :	Ventilation Pipe with plinth Detail		
NUMBER :	SDCRC-D4d	SCALE :	1:3
DRAWN BY :	NKT	DATE :	19-July-2022
		REVISED :	

Equus Waterproof Membrane Details are specially drawn for use by Local Authorities, Building Contractors, Equus Applicators, Architects and design professionals. All details are drawn to assist in the development of project specific details. Details may be modified where necessary to accommodate job specific requirements but must be approved by Equus Industries Ltd. All components must be supplied by Equus Industries Ltd. Equus reserves the right to alter or upgrade details at any time without prior notice.



E-mail : admin@equus.co.nz
 Web : www.equus.co.nz

