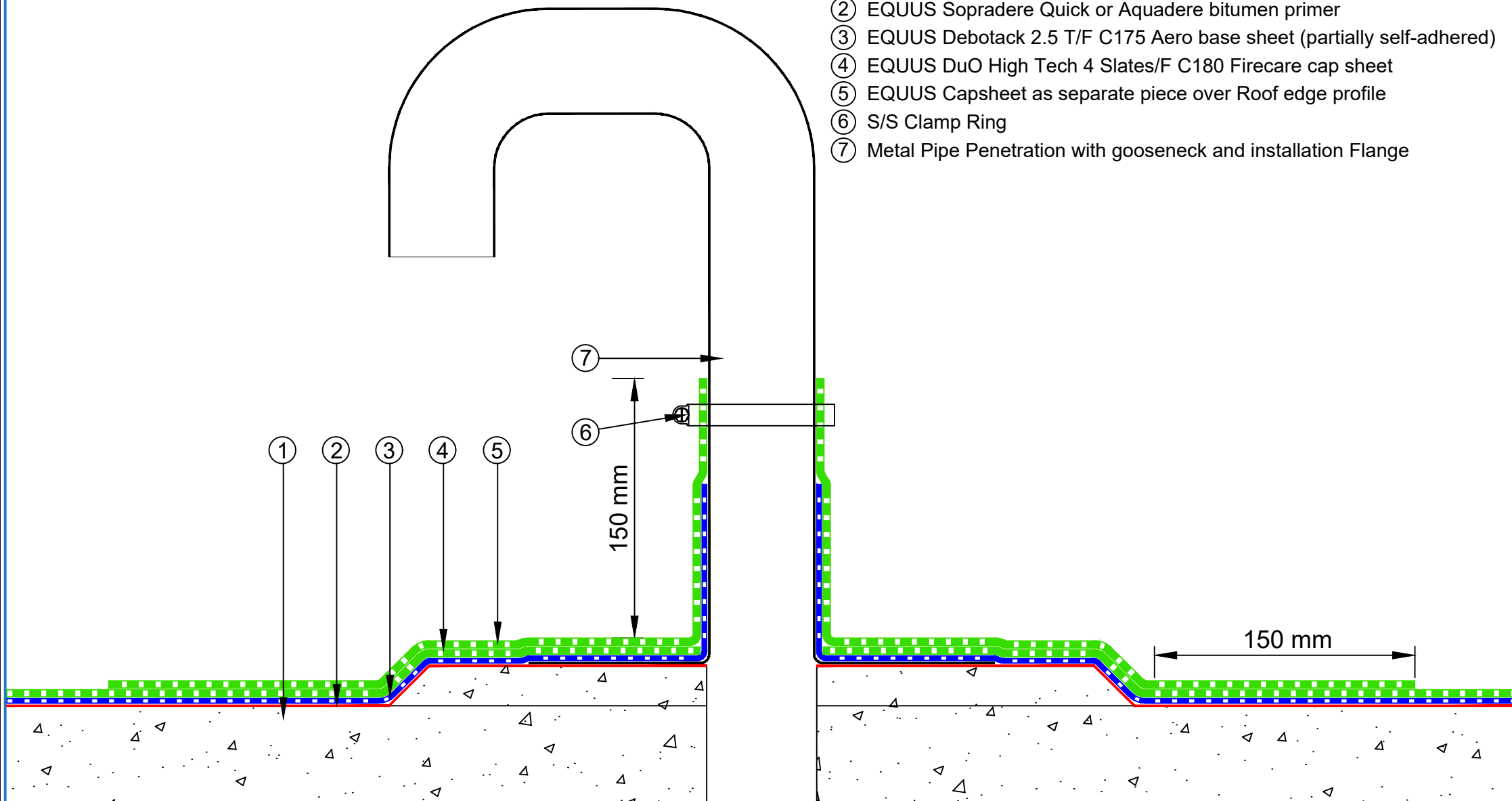


- ① Concrete Roof slab laid to fall
- ② EQUUS Sopradere Quick or Aquadere bitumen primer
- ③ EQUUS Debotack 2.5 T/F C175 Aero base sheet (partially self-adhered)
- ④ EQUUS DuO High Tech 4 Slates/F C180 Firecare cap sheet
- ⑤ EQUUS Capsheet as separate piece over Roof edge profile
- ⑥ S/S Clamp Ring
- ⑦ Metal Pipe Penetration with gooseneck and installation Flange



PROJECT :	Cold Roof on Concrete Standard Detail		
TITLE :	Pipe Penetration Solar PV Power Conduit		
NUMBER :	SDCRC-D4c	SCALE :	1:3
DRAWN BY :	NKT	DATE :	19-July-2022
		REVISED :	

Equus Waterproof Membrane Details are specially drawn for use by Local Authorities, Building Contractors, Equus Applicators, Architects and design professionals. All details are drawn to assist in the development of project specific details. Details may be modified where necessary to accommodate job specific requirements but must be approved by Equus Industries Ltd. All components must be supplied by Equus Industries Ltd. Equus reserves the right to alter or upgrade details at any time without prior notice.

