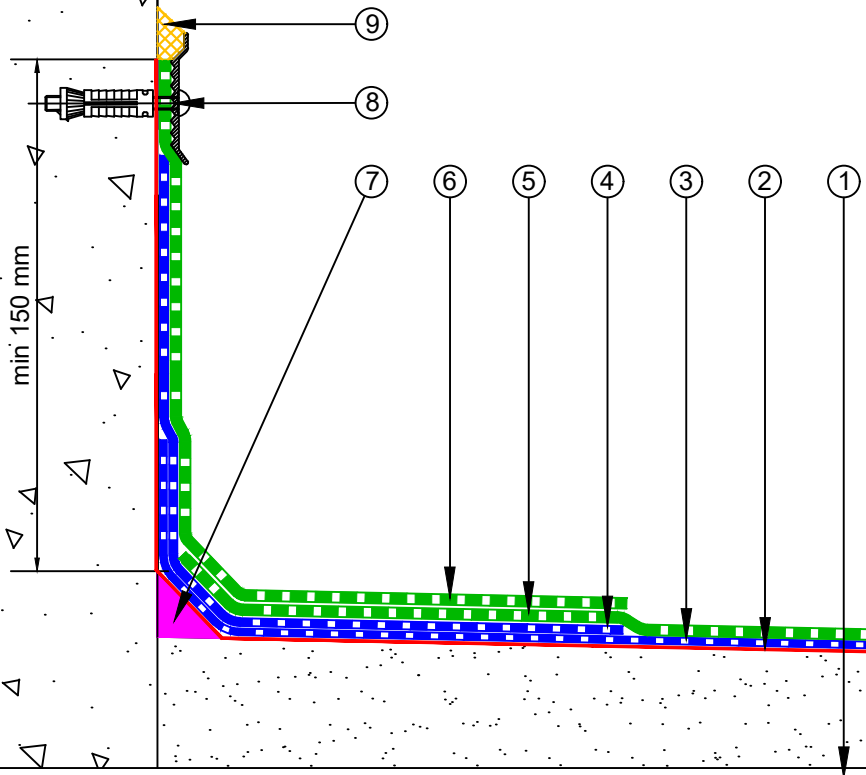


- ① Concrete Roof Slab laid to Fall
- ② EQUUS Sopradere Quick or Aquadere bitumen primer
- ③ EQUUS Debotack 2.5 T/F C175 Aero base sheet (partially self-adhered)
- ④ EQUUS base sheet, dressed to Parapet as separate piece
- ⑤ EQUUS DuO High Tech 4 Slates/F C180 Firecare cap sheet
- ⑥ EQUUS cap sheet, dressed to Parapet as separate piece
- ⑦ EQUUS bitumen fillet or approved alternative
- ⑧ EQUUS Matacryl C-profile
- ⑨ EQUUS Alsan Mastic 2200 bitumen sealant



PROJECT :	Cold Roof on Concrete Standard Detail			
TITLE :	Parapet with C-Profile termination bar			
NUMBER :	SDCRC-D1c		SCALE :	1:3
DRAWN BY :	NKT	DATE :	18-July-2022	REVISED :

Equus Waterproof Membrane Details are specially drawn for use by Local Authorities, Building Contractors, Equus Applicators, Architects and design professionals. All details are drawn to assist in the development of project specific details. Details may be modified where necessary to accommodate job specific requirements but must be approved by Equus Industries Ltd. All components must be supplied by Equus Industries Ltd. Equus reserves the right to alter or upgrade details at any time without prior notice.

