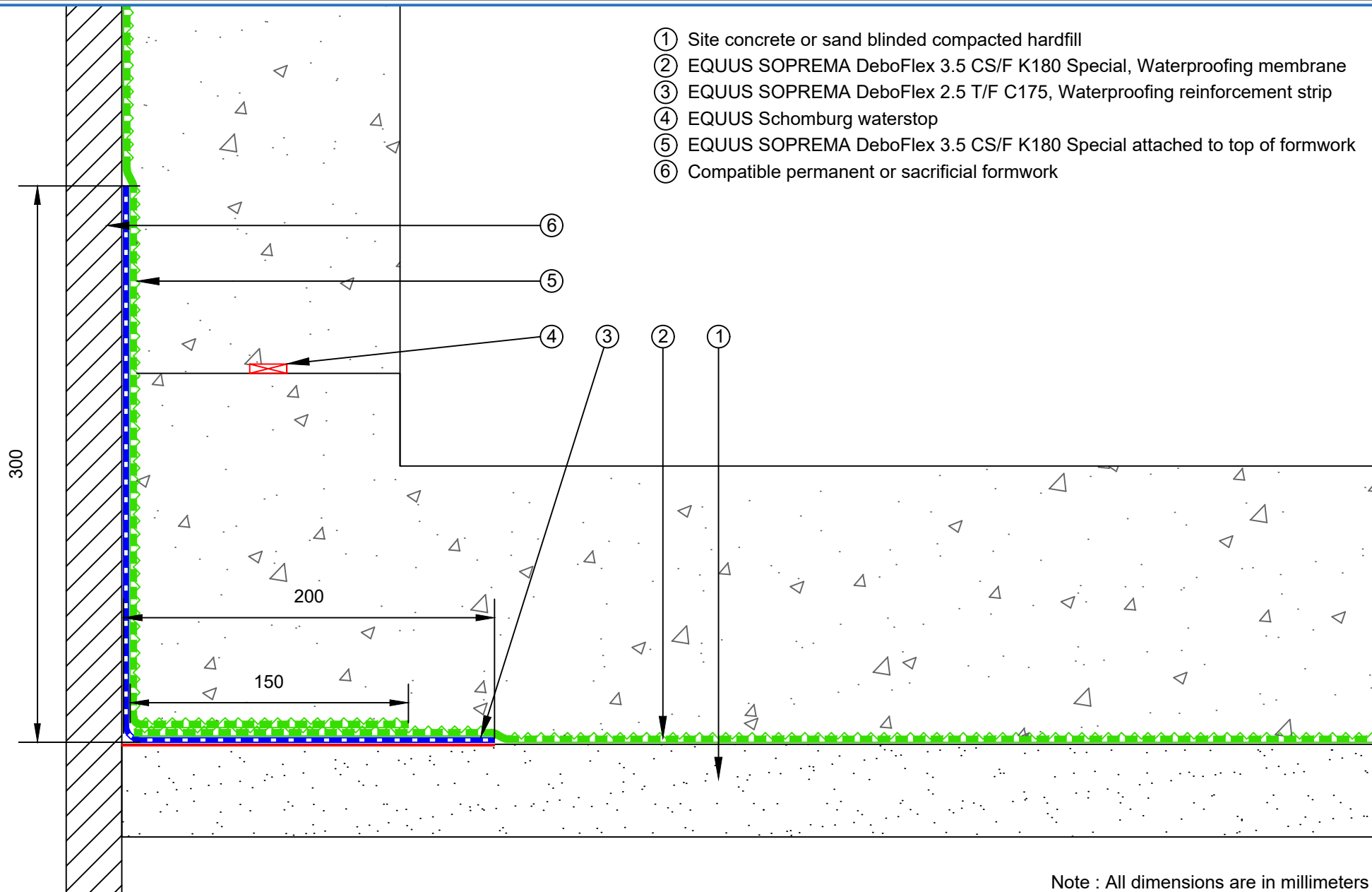


- ① Site concrete or sand blinded compacted hardfill
- ② EQUUS SOPREMA DeboFlex 3.5 CS/F K180 Special, Waterproofing membrane
- ③ EQUUS SOPREMA DeboFlex 2.5 T/F C175, Waterproofing reinforcement strip
- ④ EQUUS Schomburg waterstop
- ⑤ EQUUS SOPREMA DeboFlex 3.5 CS/F K180 Special attached to top of formwork
- ⑥ Compatible permanent or sacrificial formwork



Note : All dimensions are in millimeters

PROJECT :	Belowgrade Waterproofing Detail - Deboflex		
TITLE :	Turn Up detail to Compatible permanent formwork Detail		
NUMBER :	SDBWS-D8a	SCALE :	1:3
DRAWN BY :	NKT	DATE :	06-Aug-2022
		REVISED :	

Equus Waterproof Membrane Details are specially drawn for use by Local Authorities, Building Contractors, Equus Applicators, Architects and design professionals. All details are drawn to assist in the development of project specific details. Details may be modified where necessary to accommodate job specific requirements but must be approved by Equus Industries Ltd. All components must be supplied by Equus Industries Ltd. Equus reserves the right to alter or upgrade details at any time without prior notice.



E-mail : [admin@equus.co.nz](mailto:admin@equus.co.nz)  
 Web : [www.equus.co.nz](http://www.equus.co.nz)

