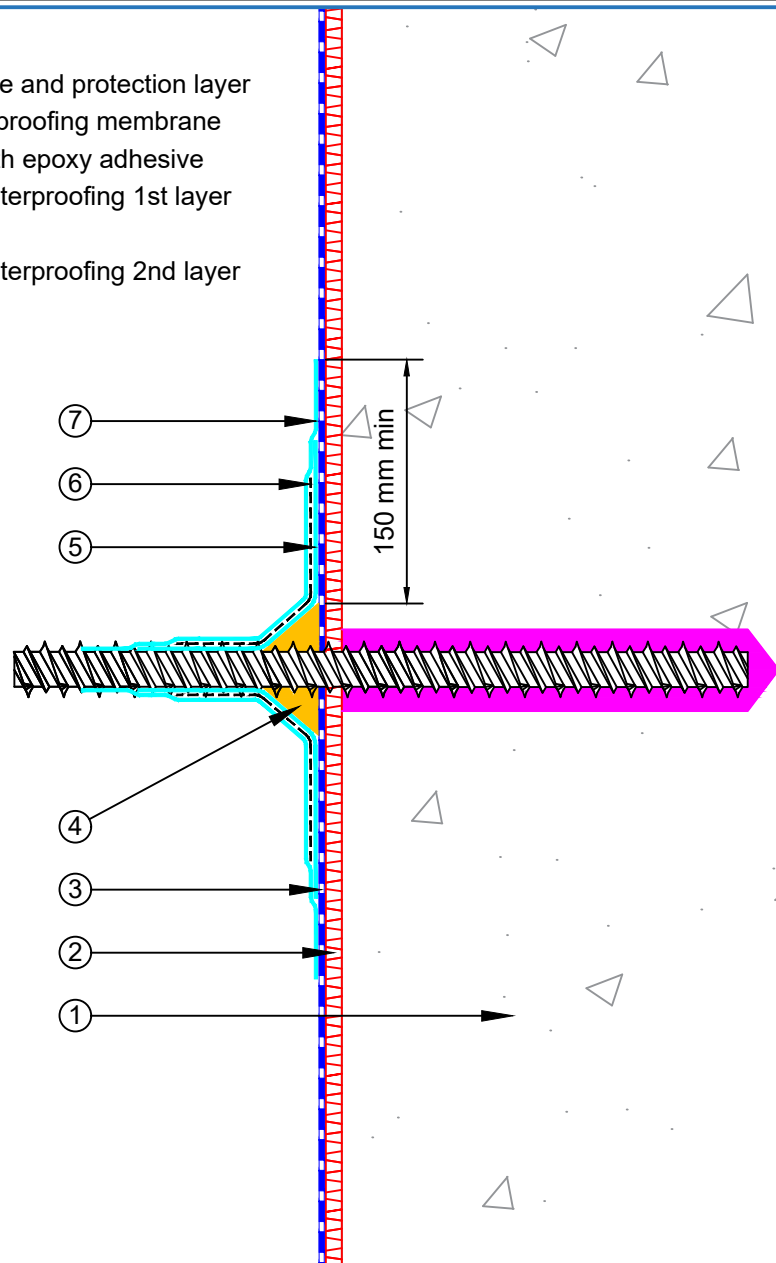


- ① Secant piling and shotcrete
- ② EQUUS SOPREMA Sopradrain 10G, drainage and protection layer
- ③ EQUUS SOPREMA Colphene BSW V, waterproofing membrane
- ④ EQUUS SOPREMA Alsan EP M, high strength epoxy adhesive
- ⑤ EQUUS SOPREMA Alsan Flashing, liquid waterproofing 1st layer
- ⑥ EQUUS SOPREMA Reinforcement fleece
- ⑦ EQUUS SOPREMA Alsan Flashing, liquid waterproofing 2nd layer



PROJECT :	Belowgrade Standard Detail - Colphene		
TITLE :	The penetration diameter under 50 mm detail		
NUMBER :	SDBWS-D12a	SCALE :	1:2
DRAWN BY :	NKT	DATE :	04-Jul-2023
		REVISED :	
<p>Equus Waterproof Membrane Details are specially drawn for use by Local Authorities, Building Contractors, Equus Applicators, Architects and design professionals. All details are drawn to assist in the development of project specific details. Details may be modified where necessary to accommodate job specific requirements but must be approved by Equus Industries Ltd. All components must be supplied by Equus Industries Ltd. Equus reserves the right to alter or upgrade details at any time without prior notice.</p>			

