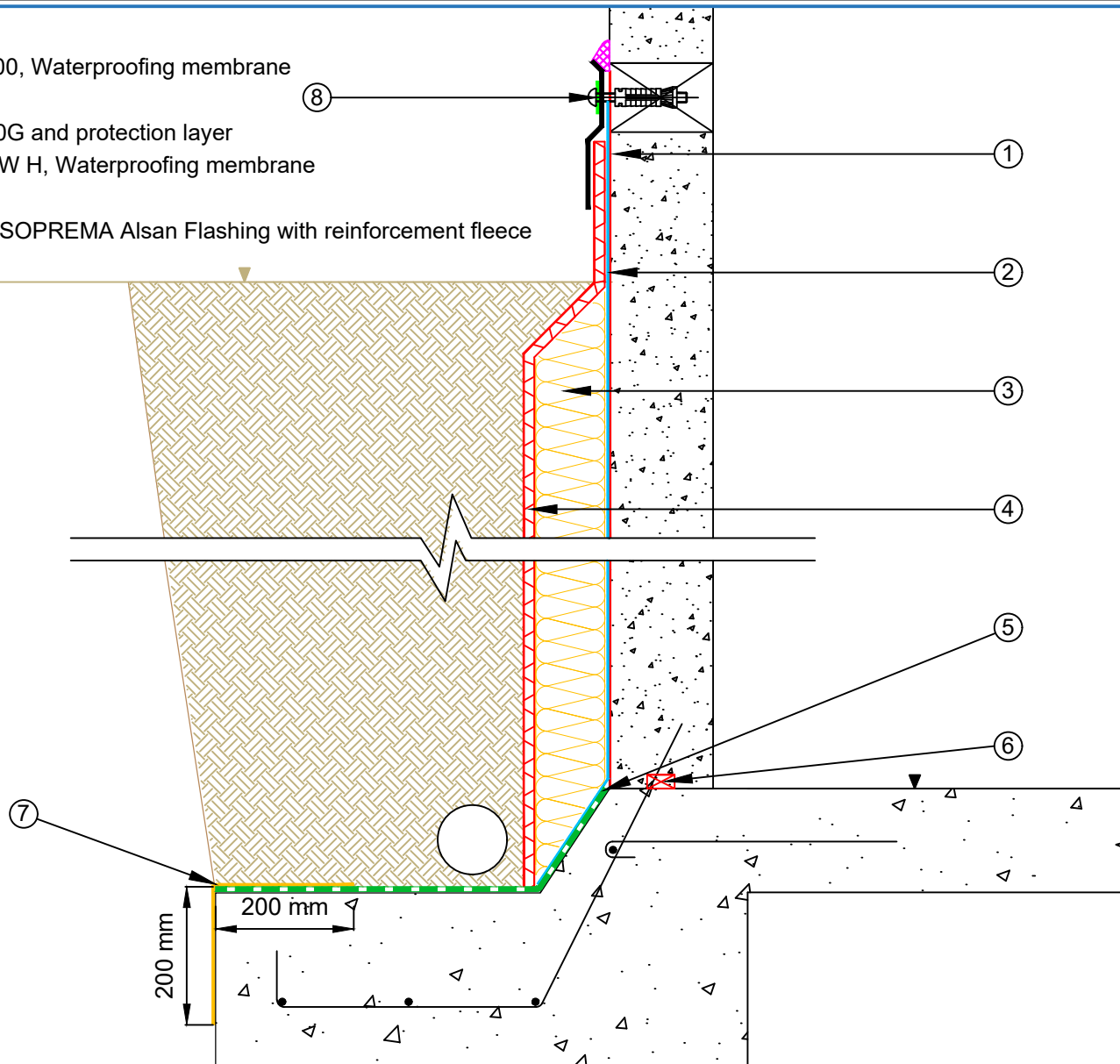


- ① EQUUS Peel & Stick Primer
- ② EQUUS SOPREMA Colphene 3000, Waterproofing membrane
- ③ XPS insulation
- ④ EQUUS SOPREMA Sopradrain 10G and protection layer
- ⑤ EQUUS SOPREMA Colphene BSW H, Waterproofing membrane
- ⑥ EQUUS Waterstop
- ⑦ EQUUS Matacyl Thix or EQUUS SOPREMA Alsan Flashing with reinforcement fleece
- ⑧ EQUUS Termination Profile



E-mail : admin@equus.co.nz
 Web : www.equus.co.nz

PROJECT :	Belowgrade Waterproofing Detail - Colphene 3000		
TITLE :	Wall and Footing Detail (Optional)		
NUMBER :	SCBWS-D6b	SCALE :	1:10
DRAWN BY :	NKT	DATE :	11-Aug-2022
		REVISED :	

EQUUS Waterproof Membrane Details are specially drawn for use by Local Authorities, Building Contractors, Equus Applicators, Architects and design professionals. All details are drawn to assist in the development of project specific details. Details may be modified where necessary to accommodate job specific requirements but must be approved by Equus Industries Ltd. All components must be supplied by Equus Industries Ltd. Equus reserves the right to alter or upgrade details at any time without prior notice.

