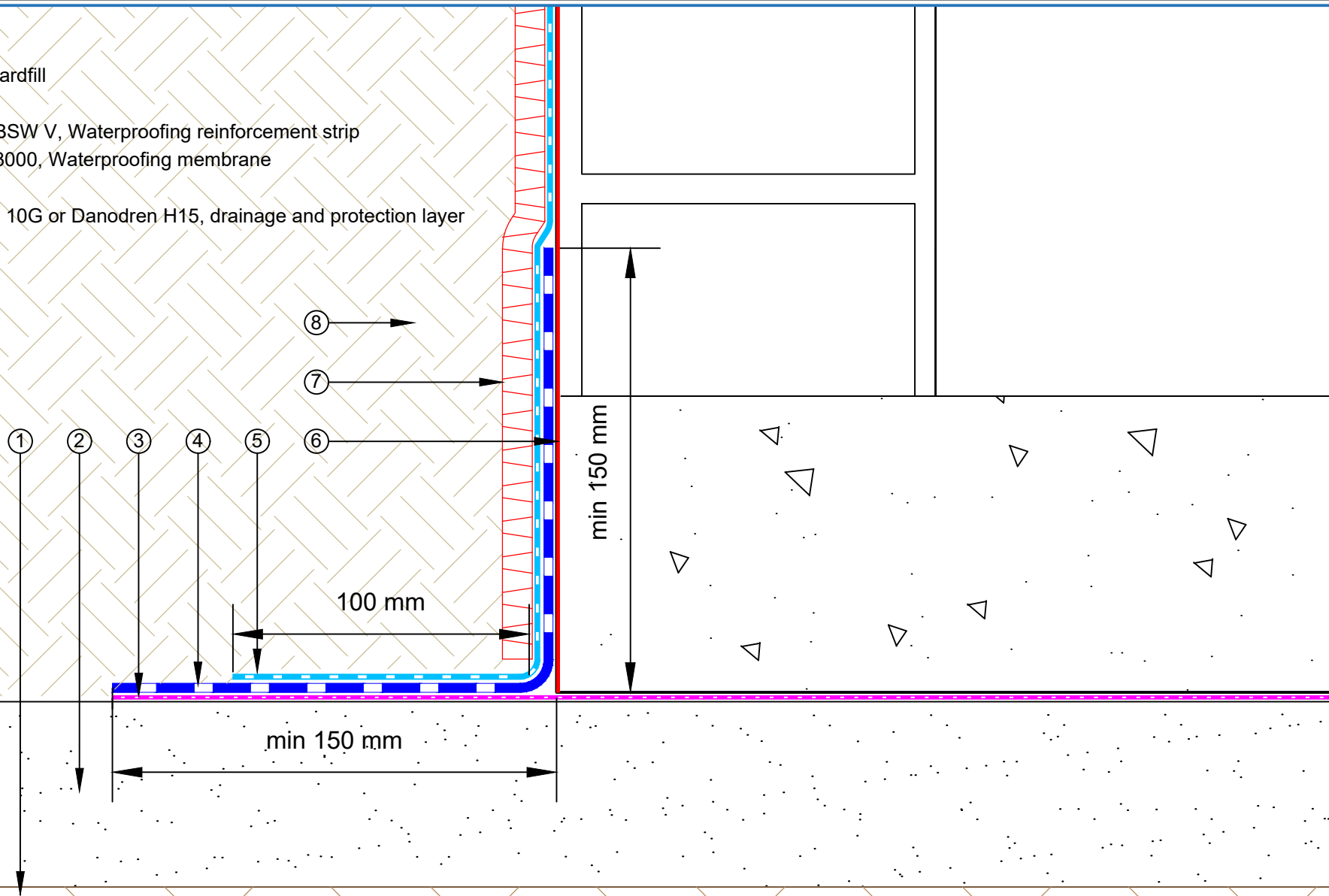


- ① Soil
- ② Lean Concrete or Compacted hardfill
- ③ DPM
- ④ EQUUS SOPREMA Colphene BSW V, Waterproofing reinforcement strip
- ⑤ EQUUS SOPREMA Colphene 3000, Waterproofing membrane
- ⑥ EQUUS Peel & Stick primer
- ⑦ EQUUS SOPREMA Sopradrain 10G or Danodren H15, drainage and protection layer
- ⑧ Backfill



E-mail : admin@equus.co.nz
 Web : www.equus.co.nz

PROJECT :	Belowgrade Waterproofing Detail - Colphene 3000		
TITLE :	Floor Wall Connection to DPM Detail		
NUMBER :	SCBWS-D5b	SCALE :	1:2
DRAWN BY :	NKT	DATE :	11-Aug-2022
		REVISED :	

Equus Waterproof Membrane Details are specially drawn for use by Local Authorities, Building Contractors, Equus Applicators, Architects and design professionals. All details are drawn to assist in the development of project specific details. Details may be modified where necessary to accommodate job specific requirements but must be approved by Equus Industries Ltd. All components must be supplied by Equus Industries Ltd. Equus reserves the right to alter or upgrade details at any time without prior notice.

