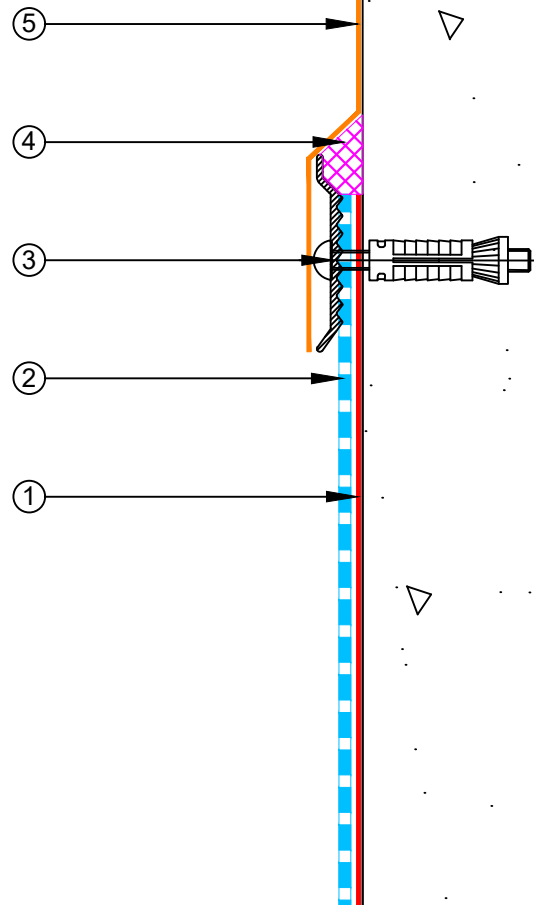


- ① EQUUS Peel & Stick primer
- ② EQUUS SOPREMA Colphene 3000, Waterproofing membrane
- ③ EQUUS SOPREMA C-profile pressure seal
- ④ EQUUS SOPREMA Alsan Mastic 2200 bitumen sealant
- ⑤ EQUUS Aquafin 2 K/M with reinforcement tape



PROJECT :	Belowgrade Waterproofing Detail - Colphene 3000			
TITLE :	Membrane termination with Termination Bar and 2KM System			
NUMBER :	SCBWS-D4d	SCALE :	1:2	
DRAWN BY :	NKT	DATE :	16-Jun-2023	REVISED :

Equus Waterproof Membrane Details are specially drawn for use by Local Authorities, Building Contractors, Equus Applicators, Architects and design professionals. All details are drawn to assist in the development of project specific details. Details may be modified where necessary to accommodate job specific requirements but must be approved by Equus Industries Ltd. All components must be supplied by Equus Industries Ltd. Equus reserves the right to alter or upgrade details at any time without prior notice.

