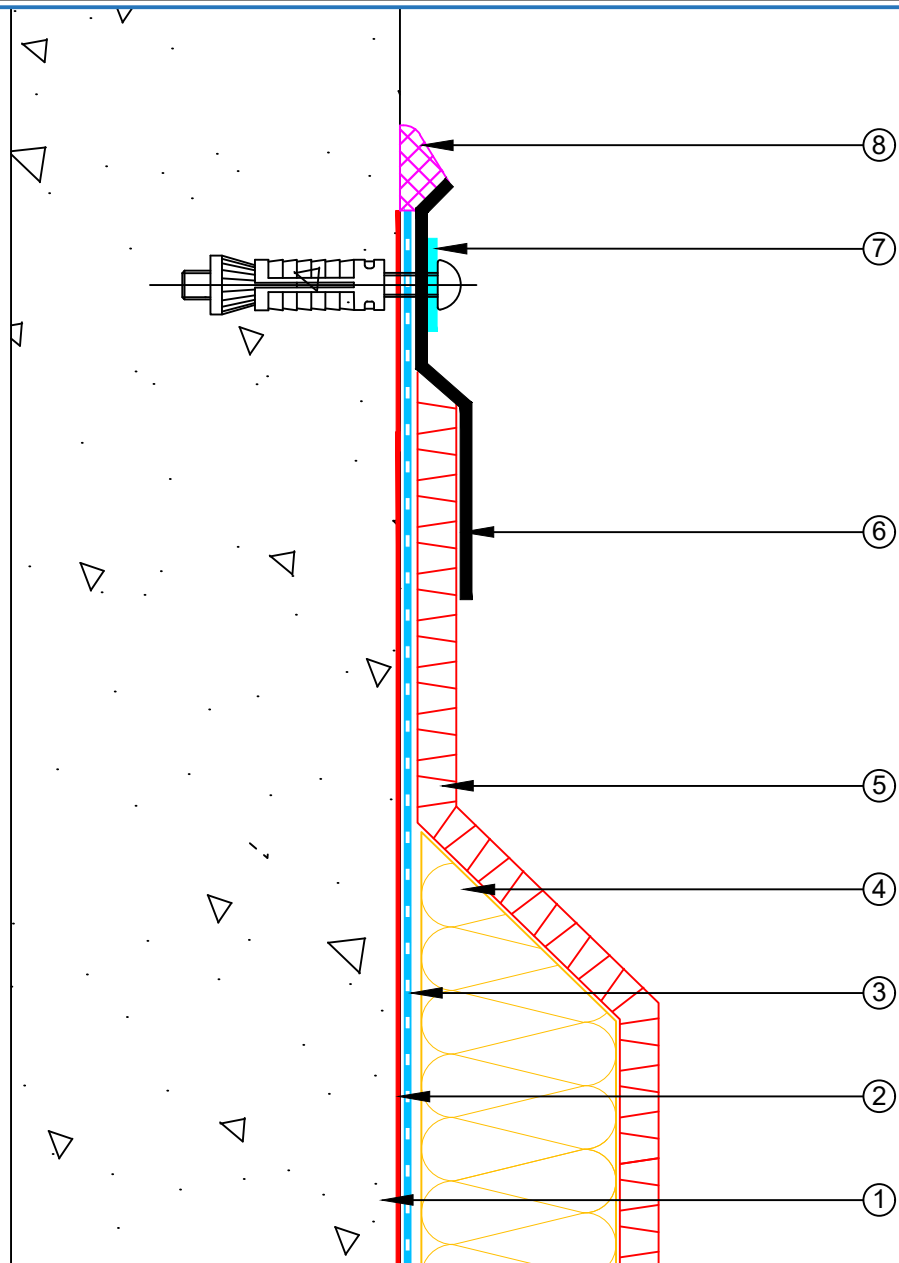


- ① Concrete wall
- ② EQUUS Peel & Stick primer
- ③ EQUUS SOPREMA Colphene 3000, Waterproofing membrane
- ④ XPS insulation
- ⑤ EQUUS SOPREMA Sopradrain 10G, drainage and protection layer
- ⑥ EQUUS Termination Profile
- ⑦ Neoprene Washer
- ⑧ EQUUS SOPREMA Alsan Mastic 2200 bitumen sealant



PROJECT :	Belowgrade Waterproofing Detail - Colphene 3000				
TITLE :	Wall Termination with Termination Bar (Optional)				
NUMBER :	SCBWS-D4b			SCALE :	1:2
DRAWN BY :	NKT	DATE :	11-Aug-2022	REVISED :	

Equus Waterproof Membrane Details are specially drawn for use by Local Authorities, Building Contractors, Equus Applicators, Architects and design professionals. All details are drawn to assist in the development of project specific details. Details may be modified where necessary to accommodate job specific requirements but must be approved by Equus Industries Ltd. All components must be supplied by Equus Industries Ltd. Equus reserves the right to alter or upgrade details at any time without prior notice.

