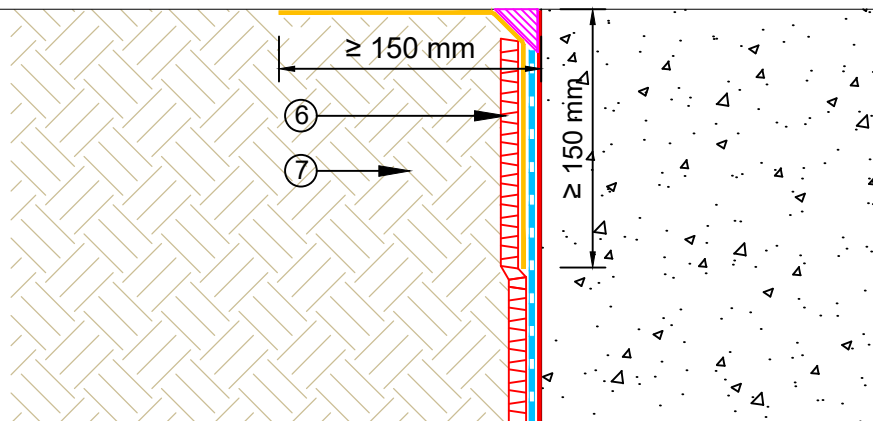
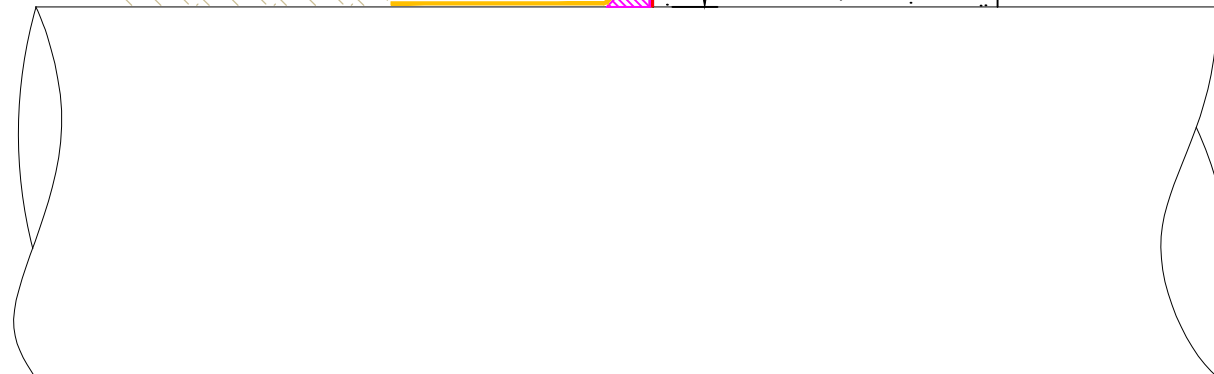
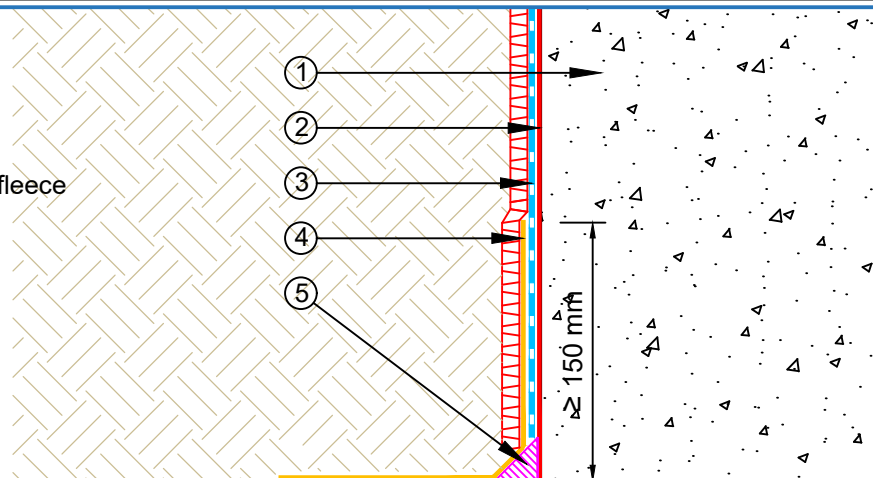


- ① Concrete Basement Wall
- ② EQUUS Peel & Stick primer
- ③ EQUUS SOPREMA Colphene 3000, Waterproofing membrane
- ④ EQUUS Matacyl Thix or EQUUS SOPREMA Alsan Flashing with reinforcement fleece
- ⑤ EQUUS SOPREMA Alsan Mastic 2200 bitumen sealant
- ⑥ EQUUS SOPREMA Sopradrain 10G, drainage and protection layer
- ⑦ Backfill



E-mail : admin@equus.co.nz
 Web : www.equus.co.nz

PROJECT :	Belowgrade Waterproofing Detail - Colphene 3000			
TITLE :	PVC Pipe on Vertical Wall Detail			
NUMBER :	SCBWS-D2c	SCALE :	1:5	
DRAWN BY :	NKT	DATE :	11-Aug-2022	REVISED :

Equus Waterproof Membrane Details are specially drawn for use by Local Authorities, Building Contractors, Equus Applicators, Architects and design professionals. All details are drawn to assist in the development of project specific details. Details may be modified where necessary to accommodate job specific requirements but must be approved by Equus Industries Ltd. All components must be supplied by Equus Industries Ltd. Equus reserves the right to alter or upgrade details at any time without prior notice.

