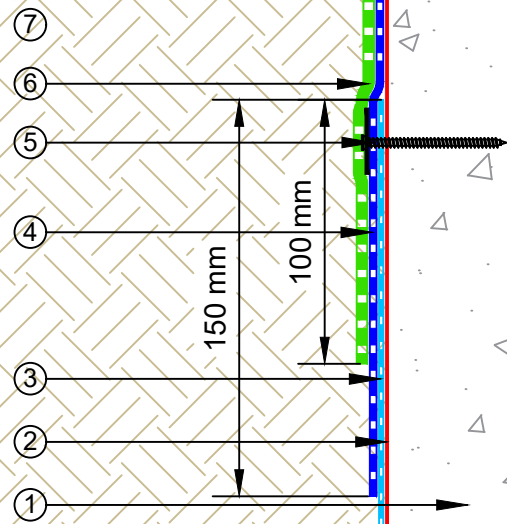
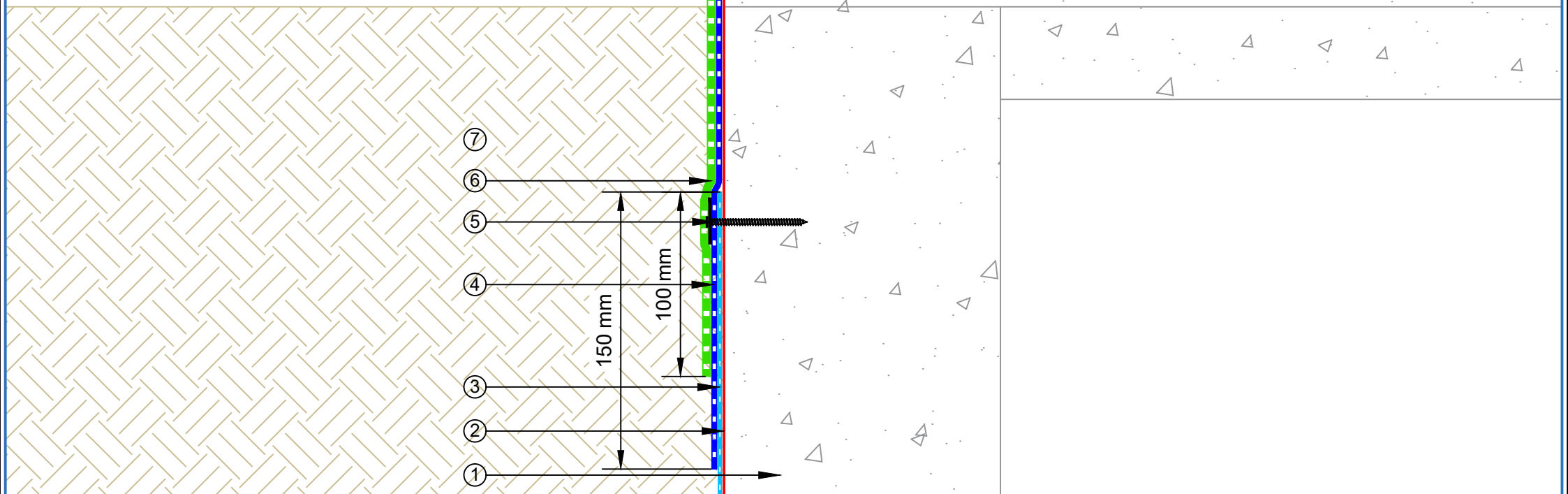


- ① Concrete Structure
- ② EQUUS Peel & Stick primer
- ③ EQUUS SOPREMA Colphene 3000 (self-adhered)
- ④ EQUUS SOPREMA DeboTack 2.5 T/F C175 basesheet (self-adhered)
- ⑤ Flat pressure seal
- ⑥ EQUUS SOPREMA DuO High Tech 4 Slates/F C180 Firecare cap sheet
- ⑦ Compacted Hardfill



PROJECT :	Belowgrade Waterproofing Detail - Colphene 3000			
TITLE :	Podium waterproofing transition detail			
NUMBER :	SCBWS-D11a	SCALE :	1:2	
DRAWN BY :	NKT	DATE :	11-Aug-2022	REVISED :
<p>Equus Waterproof Membrane Details are specially drawn for use by Local Authorities, Building Contractors, Equus Applicators, Architects and design professionals. All details are drawn to assist in the development of project specific details. Details may be modified where necessary to accommodate job specific requirements but must be approved by Equus Industries Ltd. All components must be supplied by Equus Industries Ltd. Equus reserves the right to alter or upgrade details at any time without prior notice.</p>				

