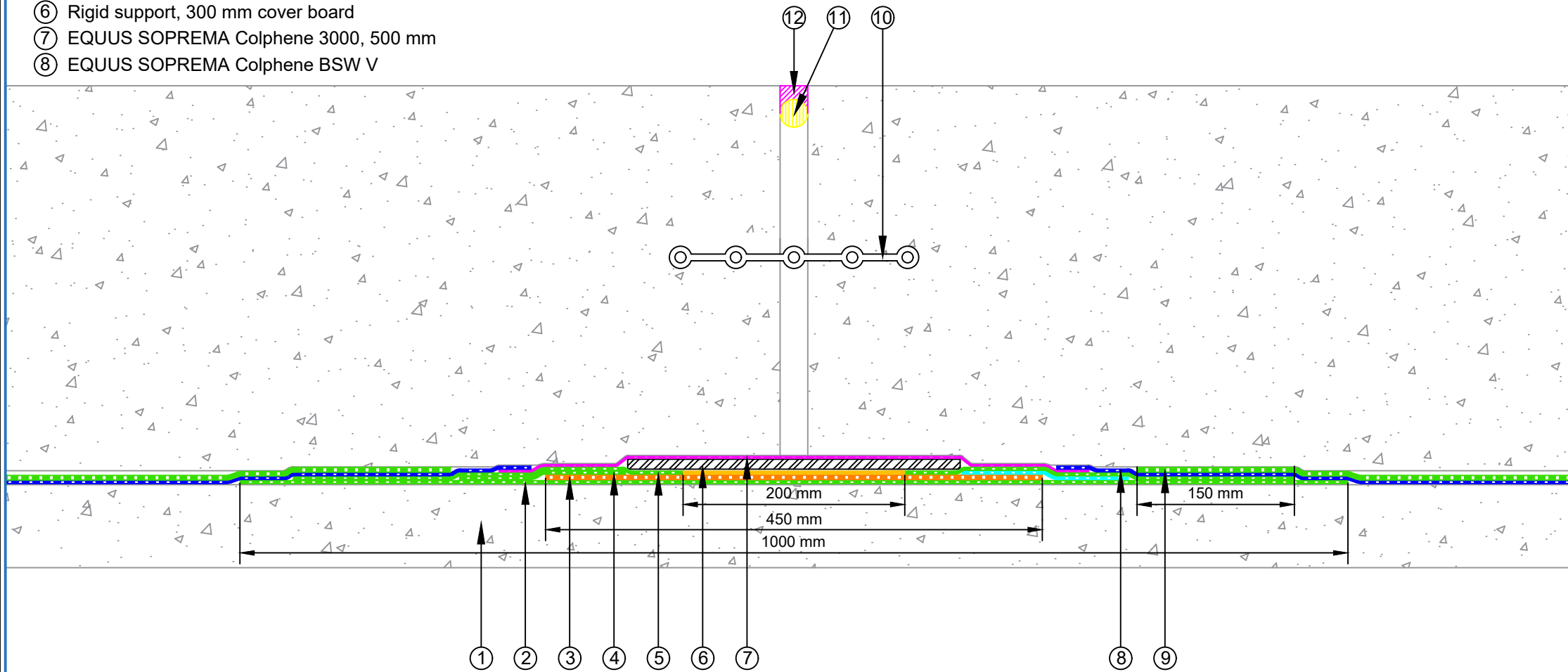


- ① Site concrete
- ② EQUUS SOPREMA Colphene BSW H, 1st layer (heat-welded)
- ③ EQUUS SOPREMA SOPRAJOINT (laps heat-welded)
- ④ EQUUS SOPREMA Colphene BSW H, (reinforcement,heat-welded)  
Minimum 150 mm reinforcement strip centered on the edge of the flange
- ⑤ EQUUS SOPREMA Colphene BSW H, 2nd layer (heat-welded)
- ⑥ Rigid support, 300 mm cover board
- ⑦ EQUUS SOPREMA Colphene 3000, 500 mm
- ⑧ EQUUS SOPREMA Colphene BSW V
- ⑨ EQUUS SOPREMA Colphene BSW H, Waterproofing membrane
- ⑩ Waterstop
- ⑪ Rod foam
- ⑫ EQUUS Alsan Mastic 2200 sealant



PROJECT :	Belowgrade Waterproofing Detail - BSW		
TITLE :	Seismic joint detail		
NUMBER :	SBBWS-D9a	SCALE :	1:5
DRAWN BY :	NKT	DATE :	10-Aug-2022
<p><small>Equus Waterproof Membrane Details are specially drawn for use by Local Authorities, Building Contractors, Equus Applicators, Architects and design professionals. All details are drawn to assist in the development of project specific details. Details may be modified where necessary to accommodate job specific requirements but must be approved by Equus Industries Ltd. All components must be supplied by Equus Industries Ltd. Equus reserves the right to alter or upgrade details at any time without prior notice.</small></p>			



E-mail : [admin@equus.co.nz](mailto:admin@equus.co.nz)  
 Web : [www.equus.co.nz](http://www.equus.co.nz)

