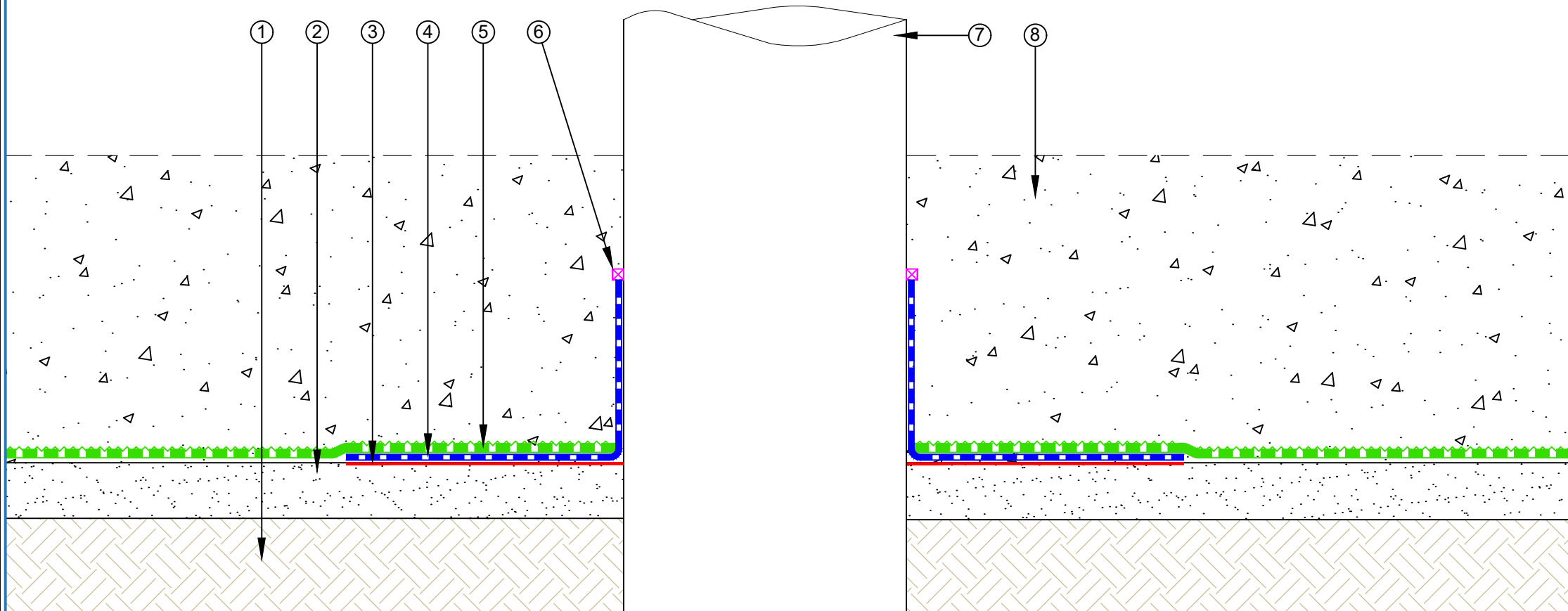


- ① Soil
- ② Lean Concrete
- ③ EQUUS Peel & Stick primer
- ④ EQUUS SOPREMA Colphene BSW V, Waterproofing reinforcement strip
- ⑤ EQUUS SOPREMA Colphene BSW H, Waterproofing membrane
- ⑥ EQUUS Schomburg Hydrophilic Rubber Sealant
- ⑦ Pile Penetration
- ⑧ Concrete Slab



PROJECT :	Belowgrade Waterproofing Detail - BSW		
TITLE :	Pipe Penetration through floor slab (Optional) Detail		
NUMBER :	SBBWS-D2b	SCALE :	1:5
DRAWN BY :	NKT	DATE :	10-Aug-2022
		REVISED :	

Equus Waterproof Membrane Details are specially drawn for use by Local Authorities, Building Contractors, Equus Applicators, Architects and design professionals. All details are drawn to assist in the development of project specific details. Details may be modified where necessary to accommodate job specific requirements but must be approved by Equus Industries Ltd. All components must be supplied by Equus Industries Ltd. Equus reserves the right to alter or upgrade details at any time without prior notice.



E-mail : [admin@equus.co.nz](mailto:admin@equus.co.nz)  
 Web : [www.equus.co.nz](http://www.equus.co.nz)

