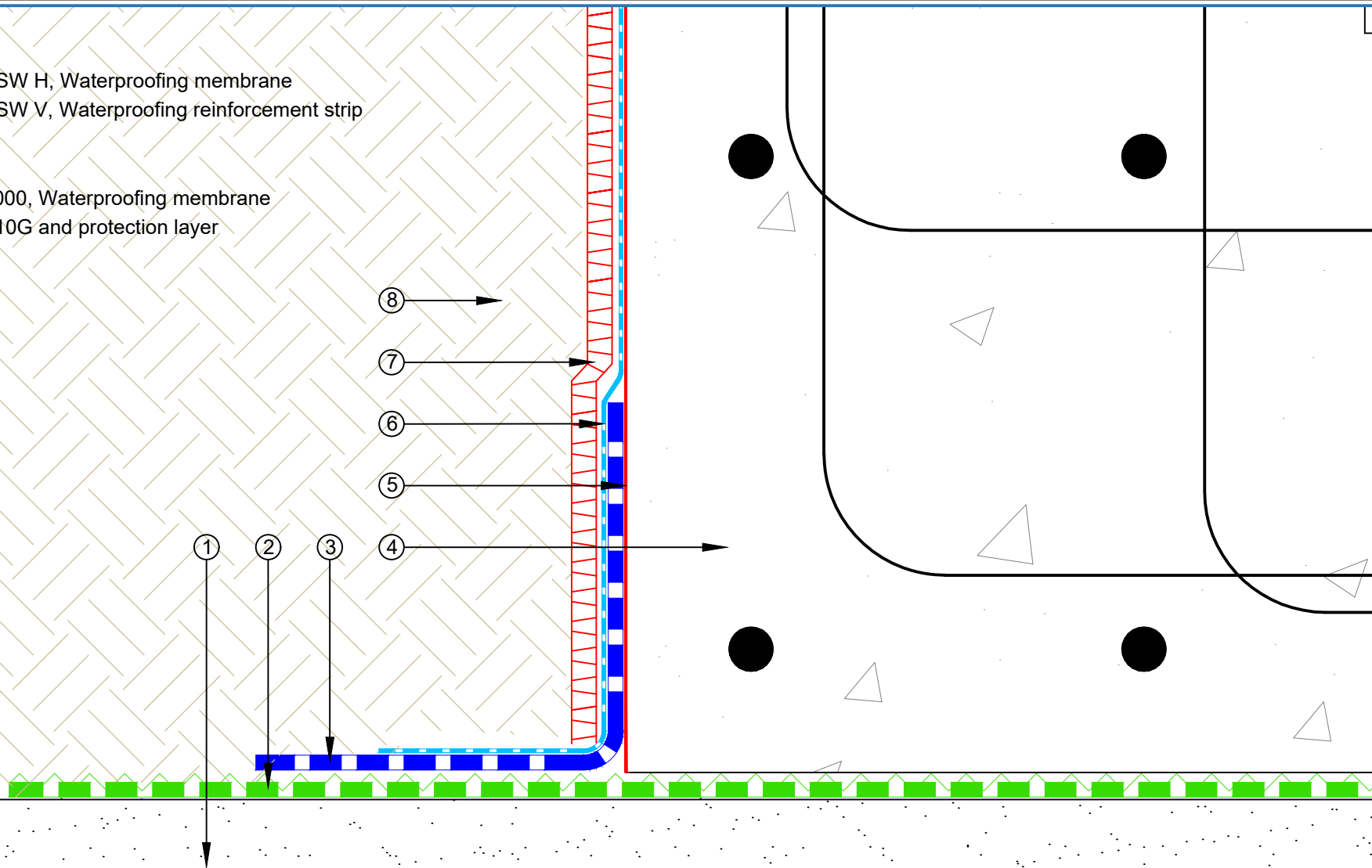



- ① Site-concrete
- ② EQUUS SOPREMA Colphene BSW H, Waterproofing membrane
- ③ EQUUS SOPREMA Colphene BSW V, Waterproofing reinforcement strip
- ④ Concrete Lift Pit
- ⑤ EQUUS Peel & Stick primer
- ⑥ EQUUS SOPREMA Colphene 3000, Waterproofing membrane
- ⑦ EQUUS SOPREMA Sopradrain 10G and protection layer
- ⑧ Backfill



 E-mail : admin@equus.co.nz Web : www.equus.co.nz	PROJECT :		Belowgrade Waterproofing Detail - BSW			
	TITLE :		Lift Pit Detail - Floor Wall connection			
	NUMBER :		SBBWS-D10a(1)	SCALE :	1:3	
	DRAWN BY :	NKT	DATE :	10-Aug-2022	REVISED :	
	Equus Waterproof Membrane Details are specially drawn for use by Local Authorities, Building Contractors, Equus Applicators, Architects and design professionals. All details are drawn to assist in the development of project specific details. Details may be modified where necessary to accommodate job specific requirements but must be approved by Equus Industries Ltd. All components must be supplied by Equus Industries Ltd. Equus reserves the right to alter or upgrade details at any time without prior notice.					

