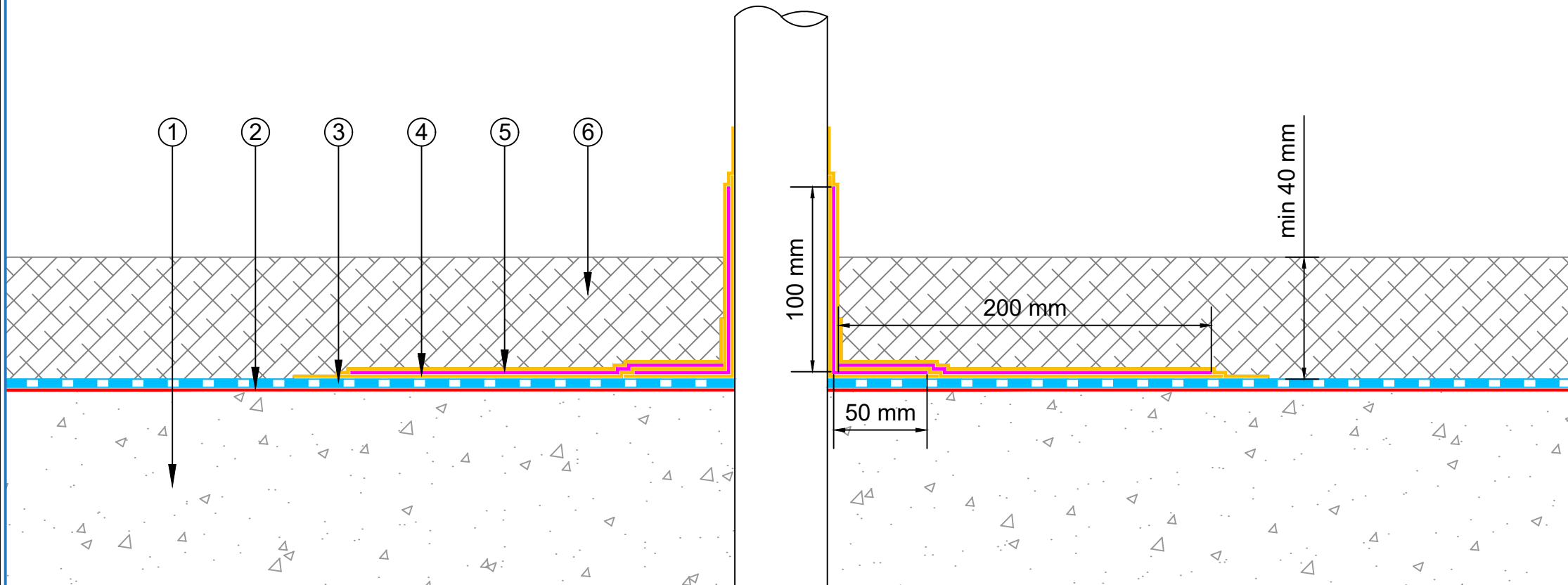


- ① Concrete Deck
- ② EQUUS SOPREMA ANTIROCK primer
- ③ EQUUS SOPREMA ANTIROCK, Waterproofing Membrane
- ④ EQUUS SOPREMA ALSAN® FLASHING, Liquid Waterproofing
- ⑤ EQUUS SOPREMA ALSAN FLEECE, Reinforcement Fleece
- ⑥ Asphalt



PROJECT :	ANTIROCK Standard Detail				
TITLE :	Pipe penetration Detail				
NUMBER :	SACCC-D5a			SCALE :	NTS
DRAWN BY :	NKT	DATE :	24-Jul-2023	REVISED :	

Equus Waterproof Membrane Details are specially drawn for use by Local Authorities, Building Contractors, Equus Applicators, Architects and design professionals. All details are drawn to assist in the development of project specific details. Details may be modified where necessary to accommodate job specific requirements but must be approved by Equus Industries Ltd. All components must be supplied by Equus Industries Ltd. Equus reserves the right to alter or upgrade details at any time without prior notice.



E-mail : [admin@equus.co.nz](mailto:admin@equus.co.nz)  
 Web : [www.equus.co.nz](http://www.equus.co.nz)

