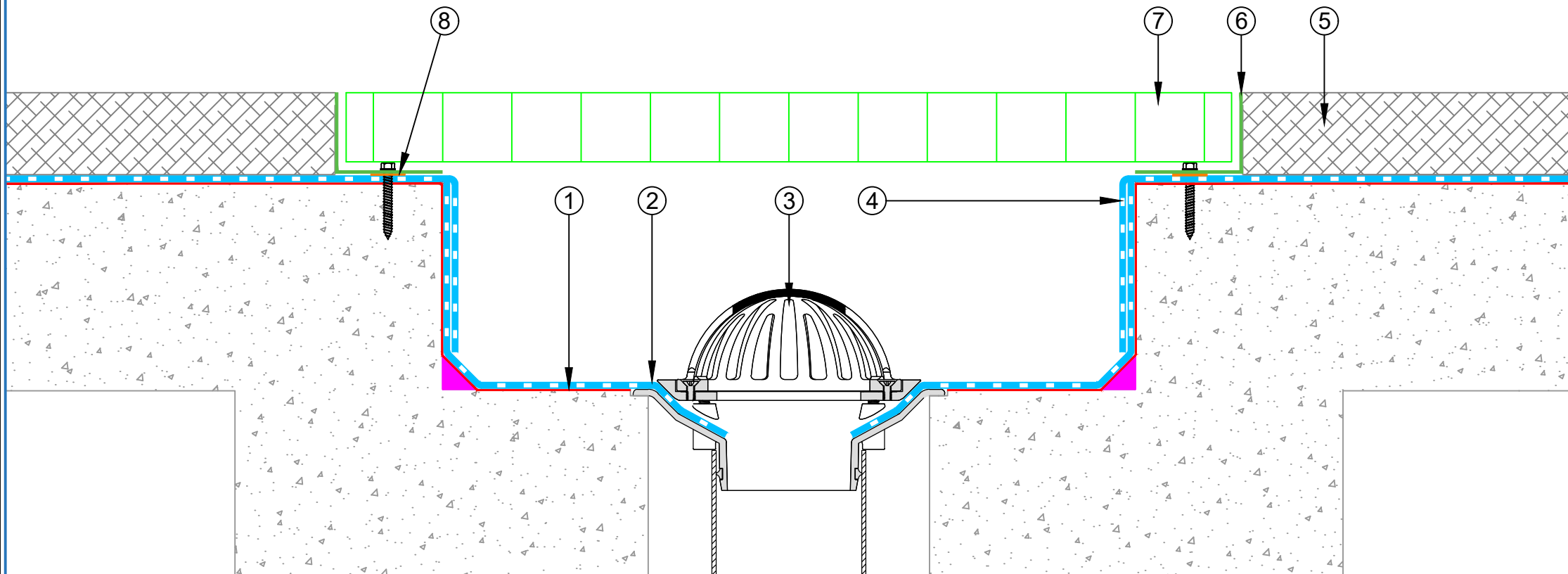


- ① EQUUS SOPREMA ANTIROCK primer
- ② EQUUS SOPREMA ANTIROCK
- ③ EQUUS Allproof Dome Clamp Ring Drain
- ④ EQUUS SOPREMA ANTIROCK as separate piece
- ⑤ Asphalt
- ⑥ L-angle
- ⑦ Cast iron grate
- ⑧ Neoprene Washer



PROJECT :	ANTIROCK Standard Detail				
TITLE :	Drainage Detail				
NUMBER :	SACCC-D3a			SCALE :	NTS
DRAWN BY :	NKT	DATE :	18-May-2023	REVISED :	

Equus Waterproof Membrane Details are specially drawn for use by Local Authorities, Building Contractors, Equus Applicators, Architects and design professionals. All details are drawn to assist in the development of project specific details. Details may be modified where necessary to accommodate job specific requirements but must be approved by Equus Industries Ltd. All components must be supplied by Equus Industries Ltd. Equus reserves the right to alter or upgrade details at any time without prior notice.

