

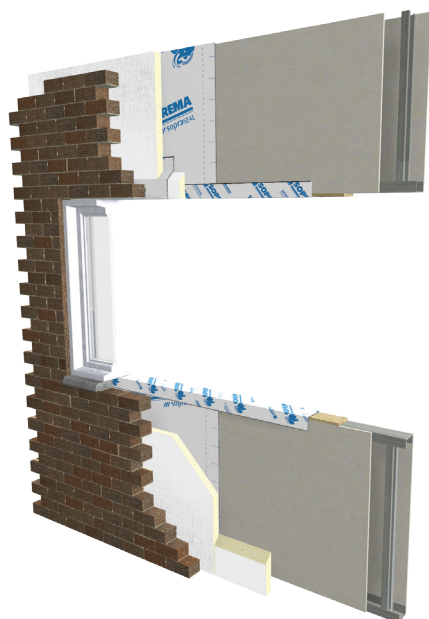


WATERPROOFING

# SOPRASEAL<sup>®</sup> STICK FLASHPRO HT WALLS



## SELF-ADHESIVE AIR AND VAPOUR BARRIER MEMBRANE



SOPRASEAL STICK FLASHPRO HT is the most versatile flashing tape. Thin and flexible, they can be used as window flashing membrane, but also around openings and at transitions.

- No primer needed for quick installation
- Versatile, as they can be installed on various surfaces, including
- PVC Easy to install with their split-back release film

### SURFACE PREPARATION

The surface must be sound and clean. Debris and other detrimental elements, such as water and grease, could compromise the adhesion.

### COMPLEMENTARY PRODUCT

#### NEOPRENE ROLLER

Maximizes adhesion of self-adhesive membranes on walls.

#### SOPRASEAL SEALANT

Designed to seal wall details.

### SOPRASEAL STICK FLASHPRO HT

THICKNESS	0.25 mm (10 mil)
DIMENSIONS	150 or 300 mm x 22.9 m
SURFACE	Polyethylene film
UNDERFACE	Split-release silicone paper*

\*Except for rolls 100 mm (4 in) wide.



[www.equus.nz](http://www.equus.nz)

[info@equus.nz](mailto:info@equus.nz)

## INSTALLATION INSTRUCTIONS

1



Prepare and install the gussets at each corner of the opening. Apply pressure using a roller to ensure maximum adhesion.

2



Adhere the bottom section by removing the silicone release film.\* Apply pressure using a roller to ensure maximum adhesion.

3



Adhere the side sections\* by repeating Step 2 instructions.

4



Adhere the top section\* by repeating Step 2 instructions.

5



In case of reverse laps, apply SOPRASEAL SEALANT.

\*All overlaps should be at least 50 mm (2 in).

If you have any questions about this product or its installation, please contact Equus, your SOPREMA Authorised Distributor.