



# EQUUS FIXPLUS PEDESTAL AND TILE SUPPORT SYSTEM

A series of fully customisable pedestals for  
raised floor applications



MARCH 2024

## BASIC SERIES

### BS60 Basic Pedestal Set

Used in raised floor applications with ceramic, natural stone and composite natural materials.



BS60-03  
(50-75mm)



BS60-04  
(73-110mm)

## BASIC SELF LEVELLING SERIES

### SL60 Basic Self Levelling Pedestal

A self levelling system used in tile applications for raised floors. Allows auto slope correction on surfaces up to a maximum 5% gradient.



SL60-01  
(42-48mm)



SL60-02  
(48-60mm)



SL60-03  
(60-85mm)



SL60-04  
(83-120mm)

## MAXI SELF LEVELLING SERIES

### SL110 Maxi Self Levelling Pedestal

A self levelling system used in tile applications for raised floors. Allows auto slope correction on surfaces up to a maximum 5% gradient.



SL110-04  
(85-135mm)



SL110-05  
(130-180mm)



SL110-06  
(180-228mm)



SL110-07  
(224-272mm)

## MAXI RAFT SELF LEVELLING SERIES

### SLW110 Maxi Raft Self Levelling Pedestal

A self levelling system used in raised floors applications for wood and aluminium joists. This allows wooden and composite deck materials to be installed easily. Allows auto slope correction on surfaces up to a maximum 5% gradient.



SLW110-04  
(85-135mm)



SLW110-05  
(130-180mm)



SLW110-06  
(180-228mm)



SLW110-07  
(224-272mm)

## ACCESSORIES

### Basic Parallel Connector (Beam Joint)

Connected to the basic disk (1 or 2 pieces can be used), the basic parallel connector creates a connection for parallel, wooden or deck flooring to the pedestal feet. Compatible with BS60, SL60, SL110 and SLW110 Series.

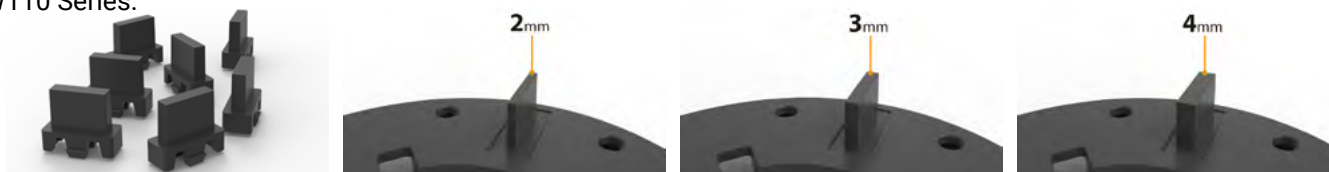


WC9801  
Basic Parallel Connector



### Replaceable Grout Tabs

2mm, 3mm and 4mm thick tabs can be inserted into and removed from the basic disc to connect tiles to the pedestal feet. For outdoor applications 4mm tabs are recommended to allow for heavy rain. Compatible with BS60, SL60, SL110 and SLW110 Series.



TC0002  
(2mm)

TC003  
(3mm)

TC004  
(4mm)

### Basic Disc and Rubber Shim

Basic disc for connection to basic parallel connector and 2mm-4mm tabs. The Rubber Shim is attached to the disc as a contact between the tiles/beams and the pedestal to prevent unwanted sounds. The Rubber shim can also be used to compensate for 1mm discrepancies between tiles. Compatible with BS60 Series



HC9801  
Basic Rubber Shim

DC9801  
Basic Disc



### Basic & Maxi Pedestal Extensions

Extension sleeves used to raise the fixed modules to the desired size, they can be connected to fixed pedestals or added together. (Maximum recommended height 25cm for Basic Series). M060 Basic Extensions compatible with BS60 and SL60 Series. M110 Maxi Extensions compatible with SL110 and SLW110 Series.



M06050  
(50mm)

M06075  
(75mm)

M11095  
(95mm)



## ACCESSORIES

### Basic Adjustment Tool

Tool used to easily adjust pedestals after the installation of flooring materials. Compatible with BS60 Series

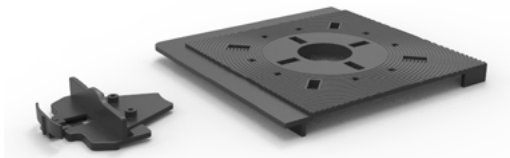


Adjustment Tool



### Lateral Flooring Installation

Lateral Installation can be applied with a support and lateral disc. These accessories allow a lateral surface to be applied to a raised floor. Compatible with BS60, SL60, SL110 and SLW110 Series.



LD0002  
Lateral Support

LD0001  
Lateral Disc



### Maxi Self Levelling Disc Pad

A self levelling disc for connection to basic parallel connector and 2mm-4mm tabs. Compatible with SL60, SL110 and SLW110 Series.



SLC001  
Maxi SL Disc Pad



### Maxi Raft Disc and Maxi Beam Joint Connector

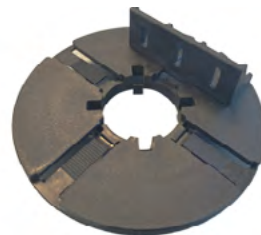
Maxi raft disc pad and adjustable beam joint connector for use in raised floor applications using wood or aluminium joists. Beam joint connector is adjustable for desired length. Compatible with SL110 and SLW110 Series.



W14001  
Maxi Raft Disc



W14002  
Maxi Beam Joint





## ACCESSORIES

### SP-5 & SP-10 Flooring Supports

The SP-5 plate and SP-10 module allow raised floors ranging from just 10mm up to 30mm high.

The support is easily adjustable ranging from 10mm to 15mm high. If required, an additional 5 mm high is obtained by inserting SP-5 plate under the SP-10.

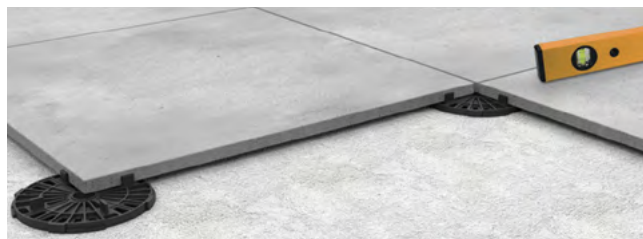
The SP-5 plates can also be mounted on top of each other to increase the height.

They are easily adjustable, highly durable and resistant to breakage.

**Note: Cannot be used to build over 30mm high.**



SP-5 and SP10 Flooring  
Supports

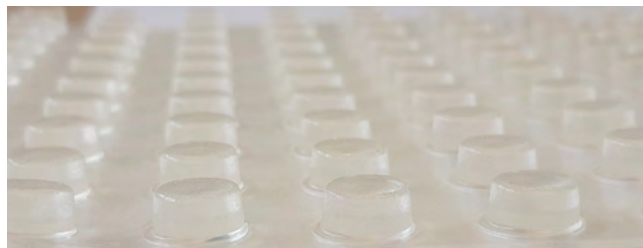


### Grid Locker

Bumpers to be used between tiles and exterior walls, and held in place with self-adhesive designed for easy attachment. This solution not only protects cladding but also ensures efficient drainage.



Grid Locker



# WHO ARE WE?

Equus Industries provides technical waterproofing solutions for Architects, Engineers, Property Managers, and Contractors in the building industry. One system does not fit all.

Equus can provide complete solutions, systems, specifications, technical support and warranties.



## Equus Southern

Unit 6/100 Fitzgerald Ave  
Christchurch

Ph: 03 353 2434

southern@equus.nz

## Equus Central

45 Hutt Rd, Petone  
Wellington

Ph: 04 576 0333

central@equus.nz

## Equus Northern

211 Archers Rd, Wairau Valley,  
Glenfield, Auckland

Ph: 09 415 4314

northern@equus.nz

Find us on:

**masterspec**

**archify**

**ARCHIPRO**

[www.equus.nz](http://www.equus.nz)

MARCH 2024