



# EQUUS SOPREMA NOVA-SK MEMBRANE SYSTEM

Standard Building Consent Package



CELEBRATING

**40** YEARS

1982-2022

JUNE 2024



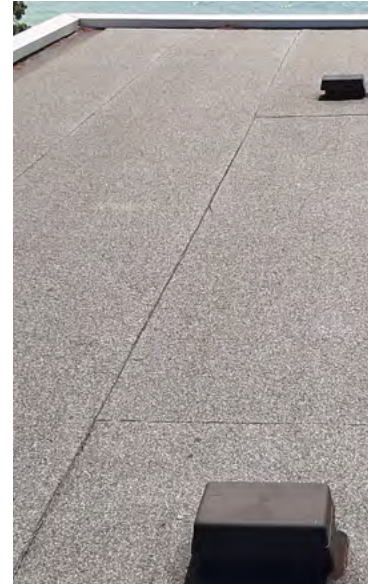
## CONTENTS

Brochure	3
Specifications	
4421EN Nova-SK Roof & Deck Membrane	5
Quality Assurance	
P31502 NOVA-SK on Plywood	14
P31501 NOVA-SK on Concrete	16
Compliance	
CodeMark Certificate No. CMNZ70151	18
BRANZ Appraisal No. 520	24
Technical Data Sheets	34
Standard Details on Plywood Substrate	41
Standard Details on Concrete Substrate	44



With proven durability in the NZ market, EQUUS SOPREMA NOVA-SK provides a robust, watertight system for any flat roof or deck design. NOVA-SK is a highly sought-after solution in the market, as it provides a completely self-adhered, two-layer bitumen waterproofing membrane. The completely flameless installation makes it a perfect solution where a two-layer membrane is preferred but torch-on application is not desired, such as roof retrofits; or of course new builds with a plywood roof.

With the inclusion of a vapour barrier and thermal insulation board, the NOVA-SK membrane creates a NOVATHERM warm roof. An efficient way of increasing the thermal resistance of a building. NOVA-SK and NOVATHERM warm roofs provide the building owner with a cost-effective solution, in an attractive natural grey slate finish.



## EQUUS SOPREMA NOVA-SK SELF-ADHERED MEMBRANE SYSTEM

The NOVA-SK self-adhered membrane system consists of a NOVA-SK Mineral 4mm cap sheet self-adhered to a 3mm self-adhesive (SBS) base sheet, to form a two layer waterproofing membrane system suitable for flat roof waterproofing with a completely flameless installation.

NOVA-SK Mineral membrane is a self-adhesive modified bitumen (SBS) membrane reinforced with non-woven polyester and fibreglass reinforcement. The upper layer is coated with coloured slates to provide an aesthetically pleasing finish, suitable for roof waterproofing where a flameless application is required.

Compatible with plywood or concrete substrates to form a standard cold roof system or over thermal insulation board to provide a NOVATHERM warm roof system.

### System Components:

- NOVA-SK MINERAL membrane
- NOVA-SK membrane
- Equus Peel & Stick Primer

### Key Benefits:

- CodeMark Certified
- BRANZ Appraised
- Economical choice
- Two-layer system
- Flameless self-adhesive application
- Proven UV resistance
- Proven resistance against weather, low & high temperatures and atmospheric conditions
- Excellent durability and easy maintenance
- Life expectancy of at least 20 years in NZ climate
- Compatible with Equus accessories such as SOPRASOLAR solar panel supports, and FIXPLUS pedestals or KRAITEC STEP tiles for decks.
- 20-year material warranty available



### Available Colour:

Dark Grey



**CodeMark**

CMNZ70151



**BRANZ Appraised**  
Appraisal No.1169 [2021]

EQUUS SOPREMA  
WARM ROOF SYSTEMS



**BRANZ Appraised**  
Appraisal No.520 [2019]

EQUUS SOPREMA  
NOVA-SK, NOVAFLEX  
AND POLIBIT ROOF AND  
DECK WATERPROOFING  
MEMBRANES

# EQUUS SOPREMA NOVATHERM SELF-ADHERED WARM ROOF SYSTEM

The NOVATHERM self-adhered warm roof system consists of the NOVA-SK two-layer membrane system applied over a thermal insulation board and vapour barrier, providing a light-weight, thermally insulated roofing system. A warm roof provides condensation control within the building, less need for mechanical venting, and energy cost savings throughout the buildings life due to the guaranteed continuous and efficient thermal resistance (R-value) as per the New Zealand Building Code.

NOVATHERM offers a completely flameless installation, and a project specific roof design with condensation risk analysis and wind uplift calculations according to the buildings location and requirements, making it an optimal solution for waterproofing flat roofs, podium decks, balconies and terraces.

Compatible with plywood, concrete and metal substrates.

### Available Colour:

Dark Grey



### System Components:

- NOVA-SK MINERAL membrane
- NOVA-SK membrane
- PermabaseDek roof board (optional)
- PIR or MINERAL WOOL thermal insulation
- SELF-ADHESIVE VAPOUR BARRIER
- Equus Peel & Stick Primer

### Key Benefits:

- CodeMark Certified
- BRANZ Appraised
- Economical choice
- Two-layer system
- Flameless self-adhesive application
- Proven UV resistance
- Proven resistance against weather, low & high temperatures and atmospheric conditions
- Excellent durability and easy maintenance
- Life expectancy of at least 20 years in NZ climate
- Guaranteed thermal resistance
- Compatible with Equus accessories such as SOPRASOLAR solar panel supports, and FIXPLUS pedestals or KRAITEC STEP tiles for decks.
- 20-year material warranty available



**CodeMark**

CMNZ70151



**BRANZ Appraised**  
Appraisal No.1169 [2021]  
EQUUS SOPREMA  
WARM ROOF SYSTEMS



**BRANZ Appraised**  
Appraisal No.520 [2019]  
EQUUS SOPREMA  
NOVA-SK, NOVAFLEX  
AND POLIBIT ROOF AND  
DECK WATERPROOFING  
MEMBRANES



### EQUUS SOPREMA Technical Support:

- Project specific specifications and details
- Condensation risk analysis for warm roof systems
- Wind uplift study for warm roof systems
- On-site quality assurance
- Nationwide network of Certified Applicators
- Warranties available

## 4421EN EQUUS NOVA-SK FLAMELESS ROOF & DECK MEMBRANE BY SOPREMA

### 1 GENERAL

This section relates to the supply and installation of Equus Industries Limited SOPREMA NOVA-SK system, a two-layer modified bitumen waterproofing membrane for cold roofs and Equus SOPREMA NOVATHERM system for warm roofs, without the use of a naked flame.

It includes:

- Self-adhesive waterproofing membranes
- All required components and accessories to complete installation

#### 1.1 RELATED WORK

Refer to ~ for ~

#### 1.2 ABBREVIATIONS AND DEFINITIONS

Refer to the general section 1232 INTERPRETATION & DEFINITIONS for abbreviations and definitions used throughout the specification.

The following abbreviations apply specifically to this section:

PIR	Polyisocyanurate
SBS	Styrene-Butadiene-Styrene

The following definitions apply specifically to this section:

Cold roof	Roof assembly where insulation is below the roof deck, in the ceiling cavity or between the joists
Warm roof	Roof assembly where rigid insulation is above the roof deck with a waterproofing membrane over the insulation

#### Documents

#### 1.3 DOCUMENTS

Refer to the general section 1233 REFERENCED DOCUMENTS. The following documents are specifically referred to in this section:

<a href="#">NZBC B2/AS1</a>	Durability
<a href="#">NZBC E2/AS1</a>	External moisture
<a href="#">NZS 1170.2:2011</a>	Structural design actions - Wind actions
<a href="#">AS 1562.1-1992</a>	Design and installation of sheet roof and wall cladding - Metal
<a href="#">NZS 3114</a>	Specification for concrete finishes
<a href="#">NZS 3604</a>	Timber-framed buildings
<a href="#">AS/NZS 4859.1</a>	Thermal insulation materials for buildings - General criteria and technical provisions
<a href="#">EN 13707</a>	Flexible sheets for waterproofing - Reinforced bitumen sheets for roof waterproofing - Definitions and characteristics
<a href="#">EN 13859-1</a>	Flexible sheets for waterproofing - Definitions and characteristics of underlays - Part 1: Underlays for discontinuous roofing
<a href="#">EN 13970</a>	Flexible sheets for waterproofing - Bitumen water vapour control layers - Definitions and characteristics
<a href="#">HB 39-1997</a>	Installation code for metal roof and wall cladding
<a href="#">WMAI CoP</a>	Waterproofing Membrane Association New Zealand - Reinforced Modified Bitumen Membrane (RMBM) Systems for Roofs and Decks Code of Practice
CodeMark <a href="#">CMNZ70151</a>	Soprema NZ Ltd Waterproofing Membrane Systems

#### 1.4 MANUFACTURER/SUPPLIER DOCUMENTS

Manufacturer and supplier documents relating to this part of the work:  
 SOPREMA Roofer's Guide Bituminous Membranes 2021  
 Equus SOPREMA Product Technical Data Sheets and Safety Data Sheets  
 Equus SOPREMA NOVA-SK and NOVATHERM standard details  
 Equus SOPREMA Quality Assurance (QA) Checklist

Equus Industries Limited Office Master 4421EN

[BRANZ Appraisal No.520](#) - Nova SK, Novaflex and Polibit roof and deck waterproofing membranes  
[BRANZ Appraisal No.1169](#) - Equus Soprema Warm Roof System

Manufacturer/supplier contact details

Company: Equus Industries Limited  
Web: [www.equus.nz](http://www.equus.nz)  
Email: [info@equus.nz](mailto:info@equus.nz)  
Telephone: Northern Branch, Auckland: 09 415 4314  
Central Branch, Wellington: 04 576 0333  
Southern Branch, Christchurch: 03 353 2434

### **Warranties**

#### 1.5 WARRANTY - MANUFACTURER/SUPPLIER

Provide a material manufacturer/supplier warranty:  
20 years For Equus SOPREMA NOVA-SK & NOVATHERM membrane systems

- Provide this warranty on the manufacturer/supplier standard form (if not available then use the standard form in the general section 1237WA WARRANTY AGREEMENT)
- Commence the warranty from the date of practical completion of the contract works.

Refer to the general section 1237 WARRANTIES for additional requirements.

#### 1.6 WARRANTY - INSTALLER/APPLICATOR

Provide an installer/applicator warranty:  
10 years For installation of Equus SOPREMA NOVA-SK & NOVATHERM membrane systems

- Provide this warranty on the installer/applicator standard form (if not available then use the standard form in the general section 1237WA WARRANTY AGREEMENT)
- Commence the warranty from the date of practical completion of the contract works.

Refer to the general section 1237 WARRANTIES for additional requirements.

### **Requirements**

#### 1.7 QUALIFICATIONS WORKERS - MANUFACTURER / SUPPLIER REQUIREMENTS

Work to be carried out by certified applicators approved by Equus Industries Ltd. Refer to 1270 CONSTRUCTION for additional requirements relating to qualifications.

#### 1.8 NO SUBSTITUTIONS

Substitutions are not permitted to any of the specified Equus SOPREMA systems or associated components and products unless approved by Equus.

#### 1.9 PRE-INSTALLATION MEETING

Convene a meeting between the applicator, contractor, all associated consultants and Equus Industries Ltd where appropriate to ensure all parties know what is required for effective performance of the system.

#### 1.10 SPECIAL DETAILS

Where a standard Equus SOPREMA NOVA-SK detail does not exist, or if a standard detail cannot be applied, an approved alternative must be obtained from Equus Industries Ltd before proceeding with the installation.

### **Compliance information**

#### 1.11 INFORMATION REQUIRED FOR CODE COMPLIANCE

Provide the following compliance documentation: -

- Applicator approval certificate from the manufacturer / supplier
- Manufacturer / supplier warranty
- Installer / applicator warranty
- Producer Statement - Construction from the applicator / installer
- Other information required by the BCA in the Building Consent Approval documents.



### **Performance**

#### 1.12 DURABILITY

Equus SOPREMA NOVA-SK and NOVATHERM insulated roof systems comply with [NZBC B2/AS1](#) when maintained to Equus requirements.

#### 1.13 ENERGY EFFICIENCY

Equus PIR rigid thermal insulation board has an aged thermal resistance (R Value) to [AS/NZS 4859.1](#) of the following:

Thickness:	R-Value:
50mm	2.35
60mm	2.85
70mm	3.30
80mm	4.00
90mm	4.50
100mm	4.85
140mm (2 x 70mm boards)	6.60

Thermal conductivity 0.021 W/mK for 50mm-70mm thick boards and 0.020 W/mK for 80mm-100mm thick boards.

### **Performance - Wind**

#### 1.14 WIND DESIGN PARAMETERS – NON-SPECIFIC DESIGN

Installation to be in accordance with Equus Industries Limited requirements and as appropriate for the project wind design stated in the general section 1220 PROJECT. Suitable for design wind pressures up to and including Extra High Wind Zone to [NZS 3604](#).

#### 1.15 WIND DESIGN PARAMETERS – SPECIFIC DESIGN

Equus and Soprema provide job-specific wind load calculations to [NZS 1170.2](#) for all specifically designed buildings using Equus Soprema waterproofing systems. Refer to the project wind design stated in the general section 1220 PROJECT

### **Quality control and assurance**

#### 1.16 QUALITY ASSURANCE

The Equus Certified Applicator is responsible for onsite Quality Assurance (QA) following the standard Equus SOPREMA NOVA-SK & NOVATHERM Quality Assurance (QA) Checklists.

#### 1.17 TESTING - FLOOD

Flood test gutters and where practical other low pitch areas with a minimum 50mm depth of water for 24 hours to Equus Industries Limited requirements. Make good any lack of water tightness when the surface is completely dry and repeat water test process after making any necessary repairs.

#### 1.18 TESTING - ELECTRONIC LEAK DETECTION

Carry out leak detection test using selected electronic leak detection system.

Test the waterproof membrane using Electronic Leak Detection procedure upon completion of membrane installation and prior to any covering. Test to be carried out by experienced operator.

Make good any lack of water tightness when the surface is completely dry. Depending on conditions, repeat a total or localised test process after making repairs.

## **2 PRODUCTS**

### **Materials - Waterproofing membranes**

#### 2.1 WATERPROOFING BASE SHEET

NOVA-SK 3mm thick self-adhesive bitumen waterproofing membrane modified with elastomeric polymers and reinforced with spun-bonded polyester & fibreglass, manufactured to EN 13707, EN 13859-1 and EN 13970. Upper surface coated with thermofusible polyolefin film or non-woven polypropylene. Anti-adhesive removable film to lower surface. Roll supplied 10m long x 1m wide.

#### 2.2 WATERPROOFING CAP SHEET

Equus Industries Limited Office Master 4421EN

NOVA-SK MINERAL 4mm thick self-adhesive bitumen waterproofing membrane modified with thermoplastic elastomeric polymers and reinforced with spun-bonded polyester & fibreglass, manufactured to EN 13707 and EN 13859-1. Upper surface coated with natural grey slate chips. Anti-adhesive removable film to lower surface. Roll supplied 10m long x 1m wide.

### Components

- 2.3 SUBSTRATE PRIMER  
Equus Peel and Stick Primer rubber based adhesive solvent solution providing adhesion of Equus self-adhesive waterproofing membranes & vapour barriers to roof substrate.
- 2.4 VAPOUR BARRIER  
SOPRASTICK, SBS modified bitumen self-adhesive membrane with composite polyester reinforcement.
- 2.5 PIR INSULATION BOARD  
EQUUS PIR insulation board with core of closed-cell polyisocyanurate foam faced on both sides with textured aluminium facer, manufactured to [AS/NZS 4859.1](#). Thermal conductivity 0.020 W/mK for 50mm-70mm thick boards and 0.020 W/mL for 80mm-100mm thick boards. Board size 1200mm wide x 2400mm long. Refer to SELECTIONS.
- 2.6 TAPERED EQUUS PIR INSULATION BOARD  
EQUUS tapered PIR insulation board with a core of rigid polyisocyanurate foam faced on both sides by gaslight multi-layered complex are supplied in different gradients to suit specified roof fall.
- 2.7 POLYURETHANE ADHESIVE  
COLTACK EVOLUTION PU FOAM single-component, solvent free, moisture curing polyurethane-based adhesive foam.
- 2.8 FIXINGS  
Equus SOPREMA fixings appropriate for substrate.
- 2.9 SILVER TAPE  
Proprietary 50mm wide silver aluminium foil joining tape for insulation board joints.
- 2.10 LIQUID DETAILING MEMBRANE  
ALSAN FLASHING one-component polyurethane bitumen resin liquid applied waterproofing membrane.
- 2.11 MASTIC SEALANT  
ALSAN MASTIC 2200 bitumen & synthetic rubber flexible mastic.
- 2.12 ALUMINIUM C-PROFILE  
Duo C-Profile extruded aluminium profile 50mm wide x 2500mm long for termination of waterproofing membrane to upstands.
- 2.13 ALUMINIUM ROOF EDGE PROFILE  
Roof Edge Profile Classic Plus 110/60 extruded aluminium profile for termination of waterproofing membrane 60mm wide with 110mm vertical exposed face forming drip edge and 45mm horizontal fastening zone.

### Accessories

- 2.14 ROOF VENT  
Equus Short Roof Vent domed vent 250mm Ø x 100mm high.
- 2.15 OUTLETS - ROOF DRAINS AND OVERFLOWS  
Allproof roof drains and overflows. Refer to SELECTIONS.
- 2.16 OUTLETS - SCUPPER  
Equus Stainless Steel Scupper 200mm aperture width x 75mm aperture height. Face height 150mm, face width 350mm, outlet length 400mm.
- 2.17 SOLAR PANEL SUPPORT SYSTEM



Equus Industries Limited Office Master 4421EN

Equus SOPREMA SOPRASOLAR FIX EVO TILT (Bitumen) support system for photovoltaic solar panels.

2.18 FLOATING DECK AND PAVER SUPPORT SYSTEM

Equus FIXPLUS proprietary adjustable support system for floating decks and pavers. Refer to 4381EF EQUUS FIXPLUS DECK SUPPORT SYSTEM.

2.19 KRAITEC® STEP RUBBER TILES

Equus SOPREMA KRAITEC STEP 500mm x 500mm x 30mm rubber granulate tile for protection of waterproofing membranes on flat roofs, supplied grey as standard with black, green and red available on request. Refer to SELECTIONS.

**3 EXECUTION**

**Conditions**

3.1 DELIVERY, STORAGE & HANDLING OF PRODUCTS

Refer to 1270 CONSTRUCTION for requirements relating to delivery, storage and handling of products.

3.2 ROUTINE MATTERS

Refer to 1250 TEMPORARY WORKS & SERVICES for protection requirements.  
Refer to 1270 CONSTRUCTION for requirements relating to defective or damaged work, removal of protection and cleaning.

3.3 PRE-INSTALLATION REQUIREMENTS

Check work previously carried out and confirm it is of the required standard for this part of the work. Ensure moisture content is:

Timber substrate: 20% maximum  
Concrete substrate: 75% maximum relative humidity

Confirm that the substrate, including fillets, sumps, outlets and projections, will ensure work of the required standard. Ensure the falls are the correct falls to rainwater outlets to avoid ponding.

3.4 INSTALLATION SEQUENCE - WARM ROOF SYSTEMS

Install SOPREMA NOVATHERM system components, vapour barrier, insulation sheets with membrane in sections to produce a weather-tight section each day complete with all joint seams, edge flashings and terminations. Cover off exposed edge at the end of each workday or if rain is imminent to ensure complete system remains dry.

**Installation - Generally**

3.5 GENERALLY

All work and materials to comply with Equus Industries Ltd installation instructions, [NZBC E2/AS1](#), SOPREMA Roofer's Guide Bituminous Membranes 2021 and the WMAI Code of Practice for Reinforced Modified Bitumen Membrane Systems for Roofs and Decks .

3.6 STANDARDS AND TOLERANCES

Refer to the general section 1270 CONSTRUCTION for general requirements.

3.7 PRELIMINARY WORK

Ensure that preliminary work, including formation of falls, flashing rebates, grooves, ducts, penetrations, provision of battens and fillets and fixing of vents and outlets to levels, is complete and properly constructed to enable the system to work as intended. This work and the substrate to be smooth, clean, dry and stable.

3.8 MINIMUM FALLS

Minimum falls for SOPREMA NOVA-SK and SOPREMA NOVATHERM membrane systems are:

- minimum fall for a roof and deck is not less than 1:80 (0.7°), to CodeMark [CMNZ70151](#)
- minimum fall for a gutter is not less than 1:100 (0.57°), to CodeMark [CMNZ70151](#)

**Installation Requirements - Plywood substrate**

3.9 PLYWOOD SUBSTRATE GENERALLY

Equus Industries Limited Office Master 4421EN

Plywood shall be a minimum of 17mm for roofs, and 21mm for decks. Sheets shall be laid tight butt jointed to maximise the use of whole sheets with sheet joints laid over framing members, in a staggered brick-bond pattern, running across the fall of the roof.

Fix plywood in accordance with the Manufacturer's instructions using countersunk stainless-steel screws, with all sheets laid in a bead of construction adhesive. Screws shall be fixed at 150mm centres on sheet perimeter and 200mm through the body of the sheet. Tongue and Groove plywood does not negate any of the above requirements.

#### **Installation Requirements - Concrete substrate**

##### **3.10 CONCRETE SUBSTRATE GENERALLY**

Allow sufficient drying time after the concrete has been poured which is generally between 14 and 28 days. Ensure that all traces of curing compound are gone or removed before commencing installation and any holes or voids are patched. Finish concrete to [NZS 3114 U3](#), with a light trowel texture. Stone flush all ridges and protrusions. Water blast to remove all detritus and allow to dry. Existing substrates and structures must be thoroughly inspected prior to specification.

Note that compliance for falls and drainage on concrete roofs and decks is achieved using specific design criteria to suit the project following WMAI Code of Practice and Manufacturer acceptable tolerances.

##### **3.11 EXPANSION MOVEMENT JOINTS**

For expansion/ movement joints refer to details on the drawings.

#### **Installation Requirements - Metal tray substrate**

##### **3.12 METAL TRAY SUBSTRATE GENERALLY**

Confirm metal tray substrate is minimum 0.7mm gauge reverse profile run metal roofing to AS 1562.1-1992 and HB 39-1997. Installed in accordance with manufacturer's and Equus requirements.

#### **Installation Requirements - Cross Laminated Timber (CLT)**

##### **3.13 CROSS LAMINATED TIMBER SUBSTRATE GENERALLY**

All sections shall be laid to manufacturer's instructions with all edges fully supported. Ensure joints are flush with edges chamfered and the surface is even and left clean and free of debris and dry before membrane application.

#### **Application - Electronic Leak Detection - conductive surface (by membrane installer)**

##### **3.14 INSTALL ELECTRONIC LEAK DETECTION CONDUCTIVE SURFACE**

Install electronic leak detection conductive surface, in accordance with manufacturer's requirements. Refer to SELECTIONS.

#### **Installation - Cold roof NOVA-SK waterproofing membrane**

##### **3.15 APPLY PRIMER**

Apply one coat of Equus Peel and Stick Primer to substrate using brush, roller with heavy nap or spray at rate of 6-8 sqm/litre to manufacturer's instructions. Allow to dry for 1 hour minimum.

##### **3.16 APPLY NOVA-SK BASE SHEET**

Unroll first roll of NOVA-SK membrane and position, cutting to length. Remove siliconised film and press membrane into place over substrate using weighted membrane roller, rolling evenly. Position and press next roll with 80mm minimum side laps and 150mm minimum end laps, offsetting end laps in adjacent runs. If required, use hot air gun to assist with closing laps. Install perimeter fixings at 300mm centres.

##### **3.17 APPLY NOVA-SK MINERAL CAP SHEET**

Unroll first roll of NOVA-SK MINERAL membrane and position, cutting to length. Remove siliconised film and press membrane into place over the base sheet using weighted membrane roller, rolling evenly. Position and press next roll with 80mm minimum side laps and 150mm minimum end laps, offsetting all laps from base sheet laps. If required, use hot air gun to assist with closing laps.

**Installation - NOVATHERM warm roof insulation and waterproofing membrane**

3.18 APPLY PRIMER

Apply one coat of Equus Peel and Stick Primer to substrate using brush, roller with heavy nap or spray at rate of 6-8 sqm/litre to manufacturer's instructions. Allow to dry for 1 hour minimum.

3.19 APPLY PRIMER TO UPSTANDS

Apply one coat of Equus Peel and Stick Primer to upstands using brush, roller with heavy nap or spray at rate of 6-8 sqm/litre to manufacturer's instructions. Allow to dry for 1 hour minimum.

3.20 APPLY VAPOUR BARRIER

Unroll first roll of SOPRASTICK membrane and position, cutting to length. Remove siliconised film and press membrane into place using weighted membrane roller. Position and press next roll with 80mm minimum side laps and 100mm minimum end laps, offsetting end laps in adjacent runs. If required, use hot air gun to assist with closing laps. Continue membrane 50mm past top of insulation board onto upstands.

3.21 INSTALL INSULATION

Install the Equus PIR thermal insulation in a brick pattern using full boards where possible. Boards shall be fixed in place using COLTACK EVOLUTION PU FOAM adhesive applied in accordance with the fixing pattern in the project specific SOPREMA wind uplift report fixing layout plan. Multiple layers of board shall be glued with adhesive between each board. Apply silver tape to all sheet joints and exterior parapet joints.

3.22 APPLY NOVA-SK BASE SHEET TO INSULATION

Unroll first roll of NOVA-SK membrane and position, cutting to length. Remove siliconised film and press membrane into place over insulation using weighted membrane roller, rolling evenly. Position and press next roll with 80mm minimum side laps and 150mm minimum end laps, offsetting end laps in adjacent runs. If required, use hot air gun to assist with closing laps. Install perimeter fixings at 300mm centres.

3.23 APPLY NOVA-SK MINERAL CAP SHEET

Unroll first roll of NOVA-SK MINERAL membrane and position, cutting to length. Remove siliconised film and press membrane into place over the base sheet using weighted membrane roller, rolling evenly. Position and press next roll with 80mm minimum side laps and 150mm end laps, offsetting all laps from base sheet laps. If required, use hot air gun to assist with closing laps.

**Installation - Penetration detailing & membrane termination**

3.24 DETAILING GENERALLY

Waterproof all outlets, penetrations, gutter stop ends, parapet upstands, pedestals, machinery plinths and any other details to the roof surface using NOVA-SK MINERAL cap sheet in conjunction with ALSAN FLASHING liquid applied membranes. Apply ALSAN MASTIC 2200 mastic sealant where detail requires. All detailing to be in accordance with Equus installation instructions and detail drawings.

3.25 TERMINATE MEMBRANE

Terminate membrane at upstands with aluminium C-Profile and ALSAN MASTIC 2200 mastic. Terminate membrane at parapets with aluminium roof edge profile. All terminations to be in accordance with Equus installation instructions and detail drawings.

3.26 INSTALL SOLAR PANEL SUPPORT SYSTEM

Heat weld support pedestals to cap sheet membrane in accordance with Equus installation instructions.

3.27 INSTALL FLOATING DECK AND PAVER SUPPORT SYSTEM

Refer to 4381EF EQUUS FIXPLUS DECK SUPPORT SYSTEM.

3.28 INSTALL RUBBER TILES

Install Equus SOPREMA KRAITEC® STEP rubber tiles in accordance with manufacturer's instructions.

**Completion & Commissioning**

3.29 COMPLETION MATTERS

Refer to 1270 CONSTRUCTION for completion requirements and if required commissioning requirements.

## 4 SELECTIONS

For further details on selections go to [www.equus.nz](http://www.equus.nz).  
Substitutions are not permitted to the following, unless stated otherwise.

### Materials

#### 4.1 EQUUS SOPREMA NOVA-SK SYSTEM MEMBRANE - COLD ROOF

Location: ~  
Supplier: Equus Industries Limited  
Type/Brand: Equus SOPREMA NOVA-SK System  
Substrate: ~  
Primer: Equus Peel and Stick Primer  
Base sheet: NOVA-SK  
Cap sheet: NOVA-SK MINERAL

#### 4.2 EQUUS SOPREMA NOVATHERM SYSTEM MEMBRANE OVER PIR INSULATION - WARM ROOF

Location: ~  
Supplier: Equus Industries Limited  
Type/Brand: Equus SOPREMA NOVATHERM System  
Substrate: ~  
Primer: ~  
Vapour barrier: SOPRASTICK  
Insulation: SOPRA-ISO SILVER PIR insulation board  
Insulation thickness/R ~  
value:  
Insulation fixing: Adhesive fixed with COLTACK EVOLUTION PU FOAM  
Base sheet: NOVA-SK  
Cap sheet: NOVA-SK MINERAL

### Accessories

#### 4.3 ROOF VENT

Location:  
Type: Equus Short Roof Vent  
Size: 250mm Ø x 100mm high

#### 4.4 OUTLET

Location: ~  
Type/Brand: ~  
Size: ~  
Downpipe diameter: ~  
Grill type: ~

#### 4.5 OVERFLOW

Location: ~  
Type/Brand: ~  
Size: ~  
Downpipe diameter: ~  
Grill type: Overflow

#### 4.6 OUTLETS - STAINLESS STEEL SCUPPERS

Location:  
Type/Brand: Equus Stainless Steel Scupper  
Size: 200mm wide x 75mm high aperture

#### 4.7 EQUUS SOPREMA KRAITEC STEP

Location: ~



Equus Industries Limited Office Master 4421EN

Type/brand: Equus Soprema Kraitec Step  
Size: 500mm x 500mm x 30mm  
Colour: ~

4.8 EQUUS SOPREMA SOPRASOLAR FIX EVO TILT SOLAR PANEL SUPPORTS

Location: ~  
Type/brand: Equus Soprasolar  
Size: ~

**Electronic Leak Detection**

4.9 ELECTRONIC LEAK DETECTION SYSTEM

Location: ~  
Substrate: ~  
System: ~



# EQUUS SOPREMA NOVA-SK

Two layer flameless waterproofing membrane system applied to plywood surfaces

Specification No: P31502

Date Prepared: November 2023

Project & Address: \_\_\_\_\_

Certified Applicator: \_\_\_\_\_

Building Contractor: \_\_\_\_\_

Building Owner/Property Manager: \_\_\_\_\_

### 1. Statement of Intent

- (a) This checklist is to be completed by both the Equus Applicator and the Building Contractor, as a step by step record of compliance with both the Equus Specification provided for the contract, and the requirements of the Manufacturers for Warranty.
- (b) A copy of this checklist must be forwarded to the nearest Regional Office of Equus Industries Ltd. A Warranty will not be issued by Equus Industries Ltd. without a copy of this Checklist being filed.
- (a) A copy of this checklist should form part of the Contract Documentation filed with the Property Manager on job completion.

### 2. Areas Treated

The areas to which the Warm Roof is applied are detailed below, with reference to plans (where appropriate).

\_\_\_\_\_  
\_\_\_\_\_  
\_\_\_\_\_

### 3. Sign Off

We confirm that all applicable processes listed in Section 4 have been correctly completed and that sign-off on each stage has been made by a person with the authority to do so.

For: \_\_\_\_\_ (Signature)  
(Building Contractor)

Date: \_\_\_\_ / \_\_\_\_ / \_\_\_\_ (Name)

For: \_\_\_\_\_ (Signature)  
(Equus Applicator)

Date: \_\_\_\_ / \_\_\_\_ / \_\_\_\_ (Name)



#### 4. Checklist And Method Statement

\* Denotes those processes which must be signed off by the Building Contractor as well.

No.	Process	Completed On	Building Contractor	Equus Contractor	Notes
1.*	Plywood surface installed correctly, with all corner fillets installed.				
2.*	Ensure outlets are sufficiently sized for anticipated run-off.				
3.*	Falls to be incorporated as per plans: <input type="checkbox"/> Specified falls: or standard minimum falls: <input type="checkbox"/> Gutters 1:100 <input type="checkbox"/> Roof 1:80 <input type="checkbox"/> Deck 1:80				
4.*	Apply one full coat of <b>EQUUS PEEL AND STICK PRIMER</b> by brush/roller at a spreading rate of 6-8 m <sup>2</sup> /L. Allow to dry for minimum 1 hour.				
5.	Unroll <b>NOVA-SK</b> base sheet, align and cut to length, discard inner roll packaging, remove film and press membrane down using a roller to ensure full coverage. Maintain laps minimum 100mm.				
6.	Unroll <b>NOVA-SK MINERAL</b> cap sheet, discard packaging, align and cut to length, remove film and press membrane down using a roller to ensure full coverage, and off-set laps to not coincide with base sheet. Use hot air gun to apply heat to laps and roll with hand roller to ensure full closure of all laps. Maintain a minimum 100mm side and 150mm end lap.				
7.	Detailing shall occur using <b>NOVA-SK MINERAL</b> cap sheet and/or <b>ALSAN FLASHING</b> or <b>MATACRYL THIX</b> with <b>DEXX TOPCOAT</b> on all outlets, pipe penetrations, gutter stops ends, parapet upstands, machinery plinths and anything above or below roof surface.				
8.	Membrane terminated with <b>C-PROFILE</b> and <b>ALSAN MASTIC 2200</b> sealant				
9.	Install <b>FIXPLUS</b> tile supports, <b>KRAITEC STEP</b> rubber tiles or <b>SOPRASOLAR FIX EVO TILT</b> photovoltaic panel supports where required.				
10.*	System to be inspected on completion.				
11.	Re-inspection of work after 2 – 3 weeks.				

Equus Industries Ltd  
 PO Box 601  
 Blenheim  
 Phone: 03 578 0214  
 Email: admin@equus.nz  
 www.equus.nz



# EQUUS SOPREMA NOVA-SK

Two layer flameless waterproofing membrane system applied to concrete surfaces

Specification No: P31501

Date Prepared: November 2023

Project & Address: \_\_\_\_\_

Certified Applicator: \_\_\_\_\_

Building Contractor: \_\_\_\_\_

Building Owner/Property Manager: \_\_\_\_\_

## 1. Statement of Intent

- (a) This checklist is to be completed by both the Equus Applicator and the Building Contractor, as a step by step record of compliance with both the Equus Specification provided for the contract, and the requirements of the Manufacturers for Warranty.
- (b) A copy of this checklist must be forwarded to the nearest Regional Office of Equus Industries Ltd. A Warranty will not be issued by Equus Industries Ltd. without a copy of this Checklist being filed.
- (a) A copy of this checklist should form part of the Contract Documentation filed with the Property Manager on job completion.

## 2. Areas Treated

The areas to which the Warm Roof is applied are detailed below, with reference to plans (where appropriate).

\_\_\_\_\_  
\_\_\_\_\_  
\_\_\_\_\_

## 3. Sign Off

We confirm that all applicable processes listed in Section 4 have been correctly completed and that sign-off on each stage has been made by a person with the authority to do so.

For: \_\_\_\_\_ (Signature)  
(Building Contractor)

Date: \_\_\_\_ / \_\_\_\_ / \_\_\_\_ (Name)

For: \_\_\_\_\_ (Signature)  
(Equus Applicator)

Date: \_\_\_\_ / \_\_\_\_ / \_\_\_\_ (Name)





#### 4. Checklist And Method Statement

\* Denotes those processes which must be signed off by the Building Contractor as well.

No.	Process	Completed On	Building Contractor	Equus Contractor	Notes
1.*	<b>Concrete</b> correctly formed to falls as per plans and cured at least 28 days prior to membrane application.				
2.*	Concrete to have all ridges and protrusions stoned flush.				
3.*	Shall be finished to NZS3114:1987 U3, with light trowel texture or suitably diamond ground.				
4.*	Depressions flushed with <b>Schomburg ASOCRET BIS 5/40</b> or and allowed to cure 48 hours before overcoating.				
5.*	Ensure outlets are sufficiently sized for anticipated run-off.				
6.*	Falls to be incorporated as per plans: <input type="checkbox"/> Specified falls: or standard minimum falls: <input type="checkbox"/> Gutters 1:100 <input type="checkbox"/> Roof 1:80 <input type="checkbox"/> Deck 1:80				
7.	Concrete surface satisfactory for installation of membrane by Equus Certified Applicator.				
8.	Apply one full coat of <b>EQUUS PEEL AND STICK PRIMER</b> by brush/roller at a spreading rate of 6-8 m <sup>2</sup> /L. Allow to dry for minimum 1 hour.				
9.	Unroll <b>NOVA-SK</b> base sheet, align and cut to length, discard inner roll packaging, remove film and press membrane down using a roller to ensure full coverage. Maintain laps minimum 100mm.				
10.	Unroll <b>NOVA-SK MINERAL</b> cap sheet, discard packaging, align and cut to length, remove film and press membrane down using a roller to ensure full coverage, and off-set laps to not coincide with base sheet. Use hot air gun to apply heat to laps and roll with hand roller to ensure full closure of all laps. Maintain a minimum 100mm side and 150mm end lap.				
11.	Detailing shall occur using <b>NOVA-SK MINERAL</b> cap sheet and/or <b>ALSAN FLASHING MATACRYL THIX</b> with <b>DEXX TOPCOAT</b> on all outlets, pipe penetrations, gutter stops ends, parapet upstands, machinery plinths and anything above or below roof surface.				
12.	Membrane terminated with <b>C-PROFILE</b> and <b>ALSAN MASTIC 2200</b> sealant				
13.	Install <b>FIXPLUS</b> tile supports, <b>KRAITEC STEP</b> rubber tiles or <b>SOPRASOLAR FIX EVO TILT</b> photovoltaic panel supports where required.				
14.*	System to be inspected on completion.				
15.	Re-inspection of work after 2 – 3 weeks.				

Equus Industries Ltd  
PO Box 601  
Blenheim  
Phone: 03 578 0214  
Email: admin@equus.nz  
www.equus.nz

Certificate no: CMNZ70151

Version: 0

Original issue date: 30 June 2023

Version date: 30 June 2023

## 1. Certificate Holder Details



**SOPREMA NEW ZEALAND LTD**  
Level 1, 245 High Street, Hutt Central Lower Hutt  
5010 New Zealand  
[www.soprema.com.au](http://www.soprema.com.au)

Distributed in New Zealand by:



**Equus Industries**  
[info@equus.nz](mailto:info@equus.nz)  
Ph: +64 3 353 2434  
[www.equus.nz](http://www.equus.nz)

## 2. Product Certification Body

**Bureau Veritas Australia Pty Ltd**

11/500 Collins Street  
Melbourne VIC 3000 Australia

[product.certification@bureauveritas.com](mailto:product.certification@bureauveritas.com)

Ph: 1800 855 190  
[www.bureauveritas.com.au](http://www.bureauveritas.com.au)

**Complaints:** The complaints process for this certificate can be found here:  
[www.bureauveritas.com.au/your-feedback](http://www.bureauveritas.com.au/your-feedback)



**BUREAU  
VERITAS**

# Product Certificate

## SOPREMA NEW ZEALAND LTD Waterproofing Membrane Systems

### 3. Description of Building Method or Product

Name of the product or method in Aotearoa New Zealand, including any brand names used. Description of what it is and the components that make up any system and its physical attributes including the materials and make-up of the product, where applicable.

*Matters that should be taken into account in the use or application of the building method or product can be found in item 6. Conditions and Limitations of Use*

The building method's or building product's catalogue or model identification number or numbers or other unique identifiers that might be used to identify the building product or building method  
**SOPREMA Waterproofing Membrane Systems are reinforced, double-layer bituminous waterproofing membrane systems, consisting of a cap sheet (DuO, Nova-SK, SOPRASUN and SOPRALENE) used with a basesheet (Soprasun Plus 3, DeboFlex, DeboTack, Soprastick, Nova-SK).**

### 4. Intended use of Building Method or Product

Intended use of the building method or product as described in the product manual and other instructional materials.

A statement of the function or purpose of the building method or product.

**SOPREMA Waterproofing Membrane Systems provide a waterproofing system, on new and existing roofs, podiums and decks of any size. SOPREMA Waterproofing Membrane Systems may be installed on a cold roof with insulation installed below the substrate or as a warm roof with PIR or Mineral Wool insulation installed above the substrate. A system incorporating a root-resistant cap sheet can be used in green roofs.**

### 5. New Zealand Building Code Provisions

The performance clauses of the New Zealand Building Code that are relevant to the intended use and with which the building method or product complies or contributes to (where used as part of a system). eg Clause B2 – DURABILITY Performance B2.3.1

*How the building method or product complies or contributes can be found in item 9. Basis for Certification.*

*Any qualifications on the extent of that compliance can be found in item 6. Conditions and Limitations of use.*

**Clause B2 Durability:** Performance Clauses B2.3.1(a\*, b), B2.3.2(a\*) (\* when protected e.g. with pavers or green roof)

**Clause E2 External moisture:** Performance Clauses E2.3.1 (contributes to), E2.3.2, E2.3.7

**Clause F2 Hazardous building materials:** Performance Clauses F2.3.1



This certificate is issued by an independent certification body accredited by JAS-ANZ, the product certification body appointed by the Chief Executive of the Ministry of Business, Innovation and Employment under the Building Act 2004. This certificate may only be reproduced in its entirety. It is advised to check that this certificate is currently valid and not withdrawn or suspended by referring to the Register of Product Certificates on the Building Performance website <http://www.building.govt.nz>.

1 of 6

## Product Certificate

SOPREMA NEW ZEALAND LTD – Waterproofing Membrane Systems



### 6. Conditions and Limitations of Use

The building method or product's use is to be in accordance with the installation instructions and requirements against which the building method or product was assessed.

Conditions or limitations of conformity for the performance requirements the building method or product is compliant with, including any requirements for people with the qualifications and skills to install or use the building method or product, any known or demonstrated situations where the building method or product should not be used. A statement as to whether there are any matters that should be taken into account in the use or application of the building product or building method and, if so, what those matters are.

NOTE: Together, items 3,4,5 and 6 define scope of use

1. SOPREMA Waterproofing Membrane Systems are certified for use:
  - a. on buildings
    - i. within the scope limitations of NZBC Acceptable Solution E2/AS para 1.1 located in all wind zones up to and including Extra High (as in NZS3604:2011), or
    - ii. subject to specific structural engineering design (complying with Verification Method B1/VM1 and referenced Standard AS/NZS1170:2002 Structural Design Actions and relevant cited material standard) up to:
      - 1) a maximum ULS wind design pressure of 4.5 kPa, or
      - 2) higher ULS wind design pressures subject to the manufacturer's site specific fastening requirements to resist wind forces as determined by AS/NZS 1170, and
  - b. where the finished fall is not less than 1:80 for roofs, podiums and decks and not less than 1:100 for gutters
  - c. applied to the following substrates:
    - i. H3.2 treated timber, including plywood sheets and reconstituted wood panels (Strandboard), Cross laminated timber (CLT) (directly to the timber substrate or to PIR or Mineral Wool boards in between the substrate and basesheet). The preservative treatment shall not be LOSP (light organic solvent preservative) or CuN (copper nitrate).
    - ii. Concrete substrates (directly to the concrete substrate or to PIR or Mineral Wool boards in between the substrate and basesheet).
    - iii. SOPREMA approved metal tray decks (to PIR or Mineral Wool boards in between the metal tray deck substrate and basesheet).
    - iv. SOPREMA approved roof cover boards.
    - v. SOPREMA approved insulated panels.
2. SOPREMA Waterproofing Membrane Systems shall be:
  - a. designed and installed in accordance with the SOPREMA Roofers Guide Bituminous Membranes 2021 Edition, and
  - b. installed by a SOPREMA Certified Applicator (see <https://equus.nz/find-an-applicator-3/> to find an approved installer in New Zealand).
  - c. protected (e.g by pavers) where subject to general pedestrian traffic. For light roof maintenance foot traffic, it is suitable to remain unprotected.



This certificate is issued by an independent certification body accredited by JAS-ANZ, the product certification body appointed by the Chief Executive of the Ministry of Business, Innovation and Employment under the Building Act 2004. This certificate may only be reproduced in its entirety. It is advised to check that this certificate is currently valid and not withdrawn or suspended by referring to the Register of Product Certificates on the Building Performance website <http://www.building.govt.nz>.

2 of 6

## Product Certificate

SOPREMA NEW ZEALAND LTD – Waterproofing Membrane Systems



### 7. Health and Safety Information

Health, safety, and well-being declarations associated with installation, maintenance, and use of the building method or product, and their specific editions and dates necessary to ensure the performance requirements of clauses F1 to F9 of the Building Code can be met.

The compliance with any manufacturer's installation instructions, maintenance, OH & S Statements, MSDS's and other Health and Safety declarations will provide the necessary Health and Safety Information pertaining to the product.

### 8. Signatures

Name and Signature of the Product Certification Body's (PCB) authorised representative and, where different, the person assigned by the PCB to make the certification decision.

Sam Guindi  
Product Certification Manager

For and on behalf of  
Bureau Veritas Australia Pty Ltd

### 9. Basis for Certification

How the performance requirements in the Building Code were met for each of the provisions. Where used as part of a system, the specific contribution to compliance.

- B2 Durability - By testing and comparison with Verification Method B2/VM1
- E2 External moisture - By testing and comparison with Acceptable Solution E2/AS1
- F2 Hazardous building materials - By comparison with the performance requirements of the Building Code clause F2.3.1



This certificate is issued by an independent certification body accredited by JAS-ANZ, the product certification body appointed by the Chief Executive of the Ministry of Business, Innovation and Employment under the Building Act 2004. This certificate may only be reproduced in its entirety. It is advised to check that this certificate is currently valid and not withdrawn or suspended by referring to the Register of Product Certificates on the Building Performance website <http://www.building.govt.nz>.



## Product Certificate

SOPREMA NEW ZEALAND LTD – Waterproofing Membrane Systems



### 10. Supporting Documentation for Certification

Reference to any Acceptable Solutions, Verification Methods, New Zealand Standards, or other compliance pathways referenced against each individual performance requirement the building method or product is compliant with, and their specific version and date.

Reference to documents describing tests and evaluations and any other documents relied on for certification or used to prove compliance, including their full title, specific version and date.

- Acceptable Solutions and Verification Methods for New Zealand Building Code Clause B2 Durability Second edition (Amendment 12), 28 November 2019
- Verification Methods E2/VM1 and Acceptable Solutions E2/AS1, E2/AS2 and E2/AS3 for New Zealand Building Code Clause E2 External Moisture Third edition (Amendment 10), 5 November 2020
- Acceptable Solutions and Verification Methods for New Zealand Building Code Clause B1 Structure First edition (Amendment 20), 29 November 2021
- NZS3604:2011 Timber framed buildings
- AS/NZS1170:2002 Structural Design Actions
- ATG 1924 Technical Approval, Belgian Construction Certification Association, 2 November 2022
- ATG 2814 Technical Approval, Belgian Construction Certification Association, 6 April 2021
- BBA Agrément Certificate 20/5843, Soprema Modified Bitumen Membranes, DUO High Tech Waterproofing Membranes, 15 December 2020
- BRANZ Appraisal 520, Novaflex and Polibit Roof and Deck Waterproofing Membranes, 2019
- BRANZ Appraisal 685, Soprema DUO Roof and Deck Membrane Systems, 2021
- BRANZ Appraisal 689, Soprema DUO Roof Membrane Systems, 2021
- BRANZ Appraisal 819, Allnex Soprema Bitumen Roofing Membrane Systems, 2019
- BRANZ Appraisal 1145, Soprema Bitumen Roofing Membrane Systems, 2021
- Roofers Guide Bituminous Membranes 2021 Edition

### 11. Supporting Information About Description (Optional)

Any supporting information for section 3.

DuO High Tech Waterproofing Membranes comprise a polyester/glass composite reinforcement with an upper coating of thermoplastic polyolefin (TPO)-modified bitumen and a lower coating of styrene butadiene-styrene (SBS)-modified bitumen:

- DuO High Tech — the standard membrane, for use in built-up specifications
- DuO High Tech FC — an enhanced fire-resistance version of the standard membrane
- DuO High Tech Mecano — for use in mechanical fastened specifications
- DuO High Tech FC Mecano — an enhanced fire-resistance version of the DuO High Tech Mecano membrane
- DuO High Tech Landscape — for use on green roofs and planter boxes
- DuO High Tech FC Landscape — an enhanced fire-resistance version of the DuO High Tech Landscape membrane.



This certificate is issued by an independent certification body accredited by JAS-ANZ, the product certification body appointed by the Chief Executive of the Ministry of Business, Innovation and Employment under the Building Act 2004. This certificate may only be reproduced in its entirety. It is advised to check that this certificate is currently valid and not withdrawn or suspended by referring to the Register of Product Certificates on the Building Performance website <http://www.building.govt.nz>.

4 of 6

## Product Certificate

SOPREMA NEW ZEALAND LTD – Waterproofing Membrane Systems



Nova-SK, and Nova-SK Mineral, are self-adhesive bitumen waterproofing membranes, reinforced with nonwoven spun bond polyester in combination with fiberglass.

SOPRASUN is an APP-modified bitumen waterproofing membrane system consisting of a base and cap sheet:

- SOPRASUN PLUS 3 is an APP-modified bitumen waterproofing base sheet membrane designed for roofing applications. SOPRASUN PLUS 3 is reinforced with a non-woven polyester combined with fiberglass. The top surface is sanded and the bottom surface is covered with a thermofusible plastic film.
- SOPRASUN PLUS 4.5KG MINERAL is an APP-modified bitumen waterproofing cap sheet membrane designed for roofing applications. SOPRASUN PLUS 4.5KG MINERAL is reinforced with a non-woven polyester combined with fiberglass. The top surface is coated with slate chips and selvedge edge is slate free on one side; the bottom surface is covered with a thermofusible plastic film.

SOPRALENE is a SBS-modified bitumen waterproofing membrane system consisting of a base and cap sheet:

- SOPRALENE FLAM 180 and SOPRALENE FLAM 180 GR are SBS-modified bitumen waterproofing membranes designed for roofing applications. Both membranes are reinforced with an ultra-high strength 180g/m<sup>2</sup> non-woven polyester. SOPRALENE FLAM 180 top and bottom surface are covered with a thermofusible plastic film. SOPRALENE FLAM 180 GR top surface is covered with granules; bottom surface is covered with thermofusible plastic film.
- SOPRALENE FLAM 180 ALU is a flexible SBS elastomeric bitumen waterproofing membrane with a non-woven polyester reinforcement. SOPRALENE FLAM 180 ALU can be used as a protection layer on top of waterproofing systems where fire retardant properties are required. The topside is protected by an embossed aluminium foil and the underside is covered by a thermofusible film.
- SOPRALENE FLAM JARDIN CAP is a flexible SBS elastomeric bitumen waterproofing membrane with a non-woven polyester reinforcement. The topside of SOPRALENE FLAM JARDIN CAP is protected by slate chippings and the underside is covered by a thermofusible film. SOPRALENE FLAM JARDIN CAP bitumen mass contains anti-root penetration properties for green roofs.

DeboFlex is a 2.5 mm I/F C175 - a 2.5 mm thick, SBS modified bitumen-based sheet waterproofing membrane with a mixture of talcum and sand on the upper surface and an ultra-thin polyethylene foil on the under layer used as a base layer in multi-layer systems. It has a composite reinforcement of 175 g/m<sup>2</sup> polyester and glass and is supplied in 1 m x 10 m rolls.

DeboTack is a flexible self-adhesive waterproofing membrane consisting of a mixture of penetration bitumen, improved with SBS (Styrene-Butadiene-Styrene). It is reinforced with a composite fleece of 175 g/m<sup>2</sup> polyester and glass.

- DEBOTACK 2.5 T/F C175 is a flexible self-adhesive waterproofing membrane consisting of a mixture of penetration bitumen, improved with SBS (Styrene- Butadiene-Styrene). It is reinforced with a composite fleece of 175 g/m<sup>2</sup> polyester and glass.
- DEBOTACK 2.5 T/F C175 AERO is a flexible self-adhesive waterproofing membrane consisting of a mixture of penetration bitumen, improved with SBS (Styrene-Butadiene-Styrene). It is reinforced with a composite fleece of 175 g/m<sup>2</sup> polyester and glass.



This certificate is issued by an independent certification body accredited by JAS-ANZ, the product certification body appointed by the Chief Executive of the Ministry of Business, Innovation and Employment under the Building Act 2004. This certificate may only be reproduced in its entirety. It is advised to check that this certificate is currently valid and not withdrawn or suspended by referring to the Register of Product Certificates on the Building Performance website <http://www.building.govt.nz>.

5 of 6

Certificate no: CMNZ70151  
Version: 0

## Product Certificate

SOPREMA NEW ZEALAND LTD – Waterproofing Membrane Systems



Soprastick and Soprastick Venti are self-adhesive membrane composed of elastomer modified bitumen and a composite polyester reinforcement. Used as a base layer in combination with a torched upper layer. The upper surface is sanded or protected by a thermofusible film.

### 12. Supporting Information About Intended Use (Optional)

Any supporting information for section 4.

N/A

### 13. Supporting Information About Conditions and Limitations of Use (Optional)

Any supporting information for section 6.

N/A



This certificate is issued by an independent certification body accredited by JAS-ANZ, the product certification body appointed by the Chief Executive of the Ministry of Business, Innovation and Employment under the Building Act 2004. This certificate may only be reproduced in its entirety. It is advised to check that this certificate is currently valid and not withdrawn or suspended by referring to the Register of Product Certificates on the Building Performance website <http://www.building.govt.nz>.

6 of 6



## BRANZ Appraised

Appraisal No. 520 [2019]

## NOVA-SK, NOVAFLEX AND POLIBIT ROOF AND DECK WATERPROOFING MEMBRANES

Appraisal No. 520 [2019]

This Appraisal replaces BRANZ  
Appraisal No. 520 [2013].

Amended 08 June 2023



### BRANZ Appraisals

Technical Assessments of  
products for building and  
construction.



Marketed By:

**Equus Industries Limited**

PO Box 601

Blenheim 7240

Email: [admin@equus.co.nz](mailto:admin@equus.co.nz)

Web: [www.equus.co.nz](http://www.equus.co.nz)



Manufactured By:

**Soprema New Zealand Ltd**

Web: [www.soprema.com.au](http://www.soprema.com.au)



**BRANZ**

1222 Moonshine Rd,

RD1, Porirua 5381

Private Bag 50 908

Porirua 5240,

New Zealand

Tel: 04 237 1170

[branz.co.nz](http://branz.co.nz)



### Product

- 1.1 Nova-SK, Novaflex and Polibit Roof and Deck Waterproofing Membranes are waterproofing membranes for nominally flat, pitched and curved roofs, gutters, parapets and decks. The products are installed as double layer systems on roofs with mineral chip or paint finish, and on decks with a mineral chip finish and protected by a raised deck system. On concrete roofs and decks, the products are installed as a single layer system and protected by paving slabs or screed.
- 1.2 The products are supplied as torch-on or self adhesive, reinforced, polymer-modified bitumen sheets in roll form.

### Scope

- 2.1 Nova-SK, Novaflex and Polibit Roof and Deck Waterproofing Membranes have been appraised as roof and deck waterproofing membranes on buildings within the following scope:
  - the scope limitations of NZBC Acceptable Solution E2/AS1, Paragraph 1.1 with respect to building height and maximum floor plan areas; and,
  - with building structures designed and constructed to meet the requirements of the NZBC; and,
  - with roof and deck supporting structures of timber framing with substrates of plywood or fibre cement sheet; and,
  - with substrates of suspended concrete slabs; and,
  - situated in NZS 3604 Wind Zones up to, and including, Extra High; and,
  - with decks that have a maximum area of 40 m<sup>2</sup> [refer to Paragraph 7.4].
- 2.2 Nova-SK, Novaflex and Polibit Roof and Deck Waterproofing Membranes have also been appraised for use as roof and deck waterproofing membranes on specifically designed buildings within the following scope:
  - with building structures designed and constructed to comply with the NZBC; and,
  - with roof and deck supporting structures of timber framing with substrates of plywood, cross laminated timber [CLT] or fibre cement sheet; and,
  - with substrates of suspended concrete slab; and,
  - subjected to maximum wind pressures [refer to Paragraph 8.1]; and,
  - with the weathertightness design of all junctions being the subject of specific design by the designer. [Note: The design of these junctions has not been appraised by BRANZ and is outside the scope of this Appraisal.]



**BRANZ Appraised**  
Appraisal No. 520 [2019]

**BRANZ Appraisal**  
Appraisal No. 520 [2019]  
23 May 2019

NOVA-SK, NOVAFLEX AND  
POLIBIT ROOF AND DECK  
WATERPROOFING MEMBRANES

- 2.3 Roofs and decks waterproofed with Nova-SK, Novaflex and Polibit Roof and Deck Waterproofing Membranes must be designed and constructed in accordance with the following limitations:
- nominally flat, curved or pitched roofs, and decks constructed to drain water to gutters and drainage outlets complying with the NZBC; and,
  - constructed to suitable falls [refer to Paragraphs 13.3 and 13.4]; and,
  - with no integral roof gardens; and,
  - no steps in level within the deck area, except into gutters; and,
  - no downpipes directly discharging to decks; and,
  - with the membranes on decks protected from physical damage and ultraviolet [UV] light by ceramic or stone tile finishes or timber, resting on approved pedestal support system or Soprorema Kraitec Step rubber tiles.
- 2.4 The design and construction of the substrate and movement and control joints is specific to each building, and therefore is the responsibility of the building designer and building contractor and is outside the scope of this Appraisal.
- 2.5 The membranes must be installed by Equus Industries Ltd licensed and trained installers.

## Building Regulations

### New Zealand Building Code [NZBC]

- 3.1 In the opinion of BRANZ, Nova-SK, Novaflex and Polibit Roof and Deck Waterproofing Membranes, if designed, used, installed and maintained in accordance with the statements and conditions of this Appraisal, will meet the following provisions of the NZBC:

**Clause B2 DURABILITY:** Performance B2.3.1 [b] 15 years. Nova-SK, Novaflex and Polibit Roof and Deck Waterproofing Membranes meet this requirement. See Paragraph 10.1. Performance B2.3.1 [c] 5 years. Alumaticote, Enviroflect Aluminium, Colour-It, or Aquaseal meet this requirement. See Paragraph 10.2.

**Clause E2 EXTERNAL MOISTURE:** Performance E2.3.1 and E2.3.2. Nova-SK, Novaflex and Polibit Roof and Deck Waterproofing Membranes meet these requirements. See Paragraphs 13.1-13.9.

**Clause F2 HAZARDOUS BUILDING MATERIALS:** Performance F2.3.1. Nova-SK, Novaflex and Polibit Roof and Deck Waterproofing Membranes meet this requirement.

## Technical Specification

- 4.1 Materials supplied by Equus Industries Ltd are as follows:
- **Novaflex Membrane** - a 3 or 4 mm thick modified bitumen, torch-applied sheet waterproofing membrane with a sanded upper surface primarily used as a base layer in a double layer system. It is supplied in 1 m x 10 m rolls.
  - **Novar-WS FLL Membrane** - a 4 mm thick modified bitumen, torch-applied sheet waterproofing membrane with an upper layer of mineral chip [black diamond] and a lower face of thermo-fusible polyolefinic film with a special root resistant reinforcement. It is supplied in 1 m x 10 m rolls.
  - **Nova-SK** - a 3 mm thick modified bitumen sheet waterproofing membrane with composite reinforcement. The upper surface is coated with thermo-fusible polyolefinic film or non-woven polypropylene. The lower surface and seldedge are protected with an anti-adhesive removable film. It is supplied in 1 m x 10 m rolls.
  - **Nova-SK Mineral** - a 4.5 kg/m<sup>2</sup> modified bitumen sheet, self-adhesive waterproofing membrane with composite reinforcement. The upper surface is coated with coloured slate chips. The lower surface and seldedge are protected with an anti-adhesive removable film. It is supplied in 1 m x 10 m rolls.





**BRANZ Appraised**  
Appraisal No. 520 [2019]

**BRANZ Appraisal**  
Appraisal No. 520 [2019]  
23 May 2019

NOVA-SK, NOVAFLEX AND  
POLIBIT ROOF AND DECK  
WATERPROOFING MEMBRANES

- **Polibit Membrane** - a 3 or 4 mm thick modified bitumen, torch-applied sheet waterproofing membrane with an upper layer of either sand or mineral chip and a lower face of thermo-fusible polyolefinic film. The sand finished membrane can be used as a base layer of a double layer system, or as both layers in a double layer finish with UV protection. The mineral finish is used as a cap sheet in a double layer system. It is supplied in 1 m x 10 m rolls.
- **Polibit H-P** - a 4 mm thick APP-modified bitumen, torch-applied sheet waterproofing membrane with an upper layer of black diamond mineral chip finish.
- **Polibit S-P** - a 4 mm thick APP-modified bitumen, torch-applied sheet waterproofing membrane with an upper layer of coloured mineral chip finish.
- **Nova-Per** - a perforated [199 holes/m<sup>2</sup>], modified bitumen sheet membrane, for use when partially bonded waterproofing system is required. This system allows equalising of pressure in order to avoid blisters, dimensional stability of the waterproofing system and reduction of possible fatigue in the completed membrane caused by cyclic movement or microcracking. It is supplied in 1 m x 30 m rolls.
- **Novaglass™ Enviroflect** - a water-based, bituminous aluminium paint for protecting new and old modified bituminous waterproofing membranes.
- **Novaglass™ Vernice Aluminium** - a water-based, bituminous aluminium coating to use in conjunction with new and old bitumen membranes
- **Novaglass™ Easygum/Soprema Easy Flashing** - a water-based, bituminous coating to use in conjunction with new and old bitumen membranes.
- **Sopradere Quick bitumen primer** - a solvent-based cutback bitumen primer for substrates prior to the installation of the membrane.
- **Equus Peel & Stick Primer** - a rubber-based adhesive solvent solution which is specifically formulated to improve the adhesion of self-adhesive waterproofing membranes
- **Aquadere bitumen primer** - a water-based cutback bitumen primer for substrates prior to the installation of the membrane.
- **Alsanc Mastic 2200 sealant** - a bituminous sealant for detailing membrane terminations and penetrations.
- **Alsanc Flashing Quadro** - a single-component polyurethane resin for waterproofing roof details. It is compatible to mineral finished Novaglass waterproofing membranes.
- **Permabase Dek** - a lightweight cement roof cover board for modified bitumen waterproofing membranes. It is supplied as a 2,400 mm x 1,200 mm x 9 mm thick board.
- **Equus Fix Plus Pedestal** - an adjustable pedestal protection system.
- **Equus Bitumen Fillets** - pre-formed bitumen angle fillets.

## Handling and Storage

- 5.1 Handling and storage of all materials, whether on-site or off-site, is under the control of the Equus Industries Ltd licensed and trained installers. Dry storage must be provided for all products and the rolls of membrane must be stored in an upright position.

## Technical Literature

- 6.1 Refer to the Appraisals listing on the BRANZ website for details of the current Technical Literature for the Nova-SK, Novaflex and Polibit Roof and Deck Waterproofing Membranes. The Technical Literature must be read in conjunction with this Appraisal. All aspects of design, use, installation and maintenance contained in the Technical Literature and within the scope of this Appraisal must be followed.



**BRANZ Appraisal**  
Appraisal No. 520 [2019]  
23 May 2019

NOVA-SK, NOVAFLEX AND  
POLIBIT ROOF AND DECK  
WATERPROOFING MEMBRANES

## Design Information

### General

- 7.1 Nova-SK, Novaflex and Polibit Roof and Deck Waterproofing Membranes are for use on roofs, gutters, parapets and decks where an impervious waterproof membrane is required to prevent damage to building elements and adjoining areas. The products can be used on new or existing buildings. Equus Industries Ltd should be consulted as to the suitability of any existing substrates prior to using Nova-SK, Novaflex and Polibit Roof and Deck Waterproofing Membranes.
- 7.2 The effective control of internal moisture must be considered at the design stage due to the impermeability of the membranes. Refer to the BRANZ Good Practice Guide: Membrane Roofing.
- 7.3 The 3 mm or 4 mm thick Novaflex, Nova-SK or Nova-SK Mineral membranes are designed for use on roofs, decks and gutters as the first layer of a double layer system, and all areas requiring detailing such as upstands, protrusions, rainwater heads and outlets. The Polibit membranes can be used as the top layer of a double layer system, or as a single layer system, see Table 1.
- 7.4 NZBC Acceptable Solution E2/AS1 limits the size of decks to 40 m<sup>2</sup>, as covered by the scope of this Appraisal. Nova-SK, Novaflex and Polibit Roof and Deck Waterproofing Membranes are suitable for use on decks larger than 40 m<sup>2</sup>. These decks are the subject of specific design and are outside the scope of this Appraisal.
- 7.5 Nova-SK, Novaflex and Polibit Roof and Deck Waterproofing Membranes, when used on decks, require a pedestal protection system such as the Equus Fix Plus pedestal system. Equus Industries Limited should be contacted for the best system to meet design requirements.

### Structure

- 8.1 Nova-SK, Novaflex and Polibit Roof and Deck Waterproofing Membranes fully bonded double layer systems are suitable for use in areas subject to maximum wind pressures of 6 kPa Ultimate Limit State.

### Substrates

#### Plywood

- 9.1 Plywood must be treated to H3 [CCA treated]. LOSP treated plywood must not be used. Plywood must comply with NZBC Acceptable Solution E2/AS1, Paragraphs 8.5.3 and 8.5.5. Where specific design is used, [i.e. outside the scope of NZBC Acceptable Solution E2/AS1], the plywood thickness and fixing size may increase and centres may decrease to meet specific wind loadings. Timber framing must comply with NZS 3604, or where specific engineering design is used, the framing shall be of at least equivalent stiffness to the framing provisions of NZS 3604, or comply with the serviceability criteria of AS/NZS 1170. In all cases, framing must be provided so that the maximum span of the substrate as specified by the substrate manufacturer is met and all sheet edges are fully supported.

#### Cross Laminated Timber [CLT]

- 9.2 The CLT must be installed in accordance with the manufacturer's instruction.

#### Concrete

- 9.3 Concrete substrates must be to a specific engineering design meeting the requirements of the NZBC, such as concrete construction to NZS 3101.

#### Existing Construction

- 9.4 A thorough inspection of the substrate must be made to ensure it is in fit condition and does not contain any materials that will adversely affect the performance of the membrane.
- 9.5 Repairs must be undertaken, where applicable, to ensure the substrate is sound, the joints are sealed, and the flashings are sound. Plywood substrates must be checked for screw fixings, and if necessary refixed as for new plywood.



**BRANZ Appraisal**  
Appraisal No. 520 [2019]  
23 May 2019

NOVA-SK, NOVAFLEX AND  
POLIBIT ROOF AND DECK  
WATERPROOFING MEMBRANES

**Table 1: Nova-SK, Novaflex and Polibit Roof and Deck Waterproofing Membrane Systems**

System	Area	Single Layer	Double Layer	Protection Required
Single layer sand finished system	Roof (concrete only)	4 mm top layer		Paving slabs or cement screeds
Double layer sand finished system	Roof		3 or 4 mm base layer with 3 or 4 mm top layer	Enviroflect Aluminium, Colour-It/Aquaseal or paving slabs
Double layer mineral finished system	Roof		3 or 4 mm base layer with 4 mm mineral chip top layer	Standard finish of material
Double layer mineral finished system	Deck		3 or 4 mm base layer with 4 mm mineral chip top layer	Ceramic or stone tile finishes or timber on a raised deck system
Single layer Mineral finished system	Deck (concrete only)	4 mm		Paving slabs on approved pedestals

### Durability

#### Serviceable Life

- 10.1 Nova-SK, Novaflex and Polibit Roof and Deck Waterproofing Membranes are expected to have a serviceable life of at least 15 years, provided they are designed, used, installed and maintained in accordance with this Appraisal and the Technical Literature.
- 10.2 Novaglass™ Enviroflect, or Novaglass™ Vernice Aluminium or Novaglass™ Easygum are expected to have a serviceable life of at least 5 years, provided they are used, installed and maintained in accordance with this Appraisal and the Technical Literature.

#### Chemical Resistance

- 10.3 Industrial air pollutants and windborne salt deposits should not significantly affect the durability of the membranes. However, the long term properties of the material may be affected by contact with petroleum-based products such as oils, greases and solvents.

### Maintenance

- 11.1 Nova-SK, Novaflex and Polibit Roof and Deck Waterproofing Membranes, including any areas with a UV coating applied, must be regularly (at least annually) checked for damage, rubbish, debris or coating breakdown. Damage, such as small punctures and tears must be repaired and coatings reapplied as recommended by Equus Industries Ltd.
- 11.2 Special care must be taken when inspecting the membrane roof systems to ensure the continuing prevention of moisture ingress, and repairs must be undertaken where required.
- 11.3 Drainage outlets must be maintained to operate effectively.

### Prevention of Fire Occurring

- 12.1 Separation or protection must be provided to Nova-SK, Novaflex and Polibit Roof Waterproofing Membranes from heat sources such as fireplaces, heating appliances, flues and chimneys. Part 7 of NZBC Verification Method C/VM1 and NZBC Acceptable Solution C/AS1, and NZBC Acceptable Solution C/AS2 provide methods for separation and protection of combustible materials from heat sources.



**BRANZ Appraised**  
Appraisal No. 520 [2019]

**BRANZ Appraisal**  
Appraisal No. 520 [2019]  
23 May 2019

NOVA-SK, NOVAFLEX AND  
POLIBIT ROOF AND DECK  
WATERPROOFING MEMBRANES

### External Moisture

- 13.1 Roofs and decks must be designed and constructed to shed precipitated moisture. They must also take account of snowfalls in snow prone areas. A means of meeting code compliance with NZBC Clause E2.3.1 is given in the Technical Literature, which aligns with details in NZBC Acceptable Solution E2/AS1.
- 13.2 When installed in accordance with this Appraisal and the Technical Literature, Nova-SK, Novaflex and Polibit Roof and Deck Waterproofing Membranes will prevent the penetration of water and will therefore meet code compliance with NZBC Clause E2.3.2. The membranes are impervious to water and will give a weathertight roof or deck.
- 13.3 Roof and deck falls must be built into the substrate and not created with mortar screeds applied over the membrane.
- 13.4 The minimum fall to roofs is 1 in 30, decks 1 in 40, concrete substrates 1 in 60 and gutters are 1 in 100. All falls must slope to an outlet. Inadequate falls will allow moisture to collect and increase the risk of deterioration of the membrane.
- 13.5 Allowance for deflection and settlement of the substrate must be made in the design of the roof to ensure falls are maintained and no ponding of water can occur.
- 13.6 Nova-SK, Novaflex and Polibit Roof and Deck Waterproofing Membranes are impermeable; therefore a means of dissipating construction moisture must be provided in the building design and construction to meet code compliance with NZBC Clause E2.3.6.
- 13.7 Drainage flanges must be used for any outlet and must be fitted with a grate or cage to reduce potential sources of blockages. An overflow must be provided where the roof does not drain to an external gutter or spouting.
- 13.8 Penetrations and upstands of the membranes must be raised above the level of any possible flooding caused by the blockage of roof drainage.
- 13.9 The design of details not covered by the Technical Literature is subject to specific weathertightness design and is outside the scope of this Appraisal.

### Water Supplies

- 14.1 Water is not contaminated by Nova-SK, Novaflex and Polibit Roof and Deck Waterproofing Membranes, and they comply with the provisions of NZBC G12.3.1. Nova-SK, Novaflex and Polibit Roof and Deck Waterproofing Membranes have been tested against, and shown to comply with AS/NZS 4020.
- 14.2 The first 25 mm of rainfall from a newly installed Nova-SK, Novaflex and Polibit Roof and Deck Waterproofing Membranes roof must be discarded before drinking water collection starts. This is to remove residues which may have developed in the processes involved in the production of a Nova-SK, Novaflex and Polibit Roof and Deck Waterproofing Membranes roof.
- 14.3 Though Nova-SK, Novaflex and Polibit Roof and Deck Waterproofing Membranes have been shown to comply with AS/NZS 4020, it must be noted that all water collected off roof surfaces made from any material is considered to be non-potable due to possible contamination from other sources. Water collection in this way can only be considered potable if it has been passed through a suitable sterilization system. Sterilization systems such as this have not been assessed and are outside the scope of this Appraisal.



**BRANZ Appraisal**  
Appraisal No. 520 [2019]  
23 May 2019

NOVA-SK, NOVAFLEX AND  
POLIBIT ROOF AND DECK  
WATERPROOFING MEMBRANES

## Installation Information

### Installation Skill Level Requirement

- 15.1 Installation must always be carried out in accordance with the Nova-SK, Novaflex and Polibit Roof and Deck Waterproofing Membranes Technical Literature and this Appraisal, by, or under the supervision of, a Licensed Building Practitioner (LBP) with the relevant Licence Class.
- 15.2 Installation and finishing of components and accessories supplied by Equus Industries Ltd and its licensed and trained installers must be completed by licensed and trained installers, approved by Equus Industries Ltd.
- 15.3 Installation of the accessories supplied by the building contractor must be carried out in accordance with the Nova-SK, Novaflex and Polibit Roof and Deck Waterproofing Membranes Technical Literature and this Appraisal, by, or under the supervision of, a Licensed Building Practitioner (LBP) with the relevant Licence Class.

### Preparation of Substrates

- 16.1 Substrates must be dry, clean and stable before installation commences. Surfaces must be smooth and free from nibs, sharp edges, dust, dirt or other materials such as oil, grease or concrete formwork release agents. All surface defects must be filled to achieve an even and uniform surface.
- 16.2 The relative humidity of concrete substrates must be 75% or less before membrane application. The concrete can be checked for dryness by using a hygrometer, as set out in BRANZ Bulletin No. 585.
- 16.3 The moisture content of the plywood and timber substructure must be a maximum of 20% and the plywood and fibre cement sheets must be dry at time of membrane application. This will generally require plywood sheets to be covered until just before the membrane is laid, to prevent rain wetting.
- 16.4 Substrates must be primed with Sopradere Quick or Aquadere bitumen primer and left to dry (4-5 hours) before the membrane is installed.

### Membrane Installation

- 17.1 The membranes must be installed in accordance with the Technical Literature.
- 17.2 All roof, deck and wall junctions must have a 20 mm x 20 mm wooden or bitumen fillet installed at the junction. Concrete substrate junctions must have a 20 mm x 20 mm cement mortar fillet installed. All external edges must be chamfered to a 5 mm radius to remove sharp edges. Alternatively, bitumen fillets of 25 mm x 25 mm can be used.
- 17.3 The membranes must be unrolled without tension onto the prepared substrate and allowed to 'relax' for at least 30 minutes prior to installation.
- 17.4 The membranes are installed from the lowest point and each layer is installed across the roof or deck falls allowing a 75 mm side overlap and a 150 mm end overlap. The cap sheet layer of a double layer system must be offset against the base sheet layer. Note: It is allowable to install the membranes following the roof or deck falls.

### Inspections

- 18.1 Critical areas of inspection for waterproofing systems are:
  - Construction of substrates, including crack control and installation of bond breakers and movement control joints.
  - Moisture content of the substrate prior to the application of the membrane.
  - Acceptance of the substrate by the membrane installer prior to application of the membrane.
  - Installation of the membrane to Equus Industries Ltd instructions.





**BRANZ Appraised**  
Appraisal No. 520 [2019]

**BRANZ Appraisal**  
Appraisal No. 520 [2019]  
23 May 2019

NOVA-SK, NOVAFLEX AND  
POLIBIT ROOF AND DECK  
WATERPROOFING MEMBRANES

### Health and Safety

- 19.1 Safe use and handling procedures for Nova-SK, Novaflex and Polibit Roof and Deck Waterproofing Membranes are provided in the Technical Literature. The products must be used in conjunction with the relevant Material Safety Data Sheets for each membrane.

### Basis of Appraisal

The following is a summary of the technical investigations carried out:

#### Tests

- 20.1 The following is a summary of the testing and test reports on Nova-SK, Novaflex and Polibit Roof and Deck Waterproofing Membranes:
- Istituto per le Tecnologie della Construzione [ITC] for tensile and elongation, tear resistance, flexibility at low temperature, resistance to static loading, resistance to dynamic loading, dimensional stability, flow resistance at elevated temperatures, adhesion of granules and watertightness.
  - ICITE for polyester reinforcement, coating mass, tensile strength, elongation, tear strength, dimensional stability, low temperature flexibility, heat resistance, sliding resistance, watertightness, static and dynamic indentation, fatigue cycling, peel resistance, air pressure and tensile strength of joints.
- 20.2 The above test methods and results have been reviewed by BRANZ and found to be satisfactory.

#### Other Investigations

- 21.1 A durability opinion has been provided by BRANZ technical experts.
- 21.2 Installation of the membranes has been assessed by BRANZ for practicability of installation and found to be satisfactory.
- 21.3 The Technical Literature has been examined by BRANZ and found to be satisfactory.

#### Quality

- 22.1 The manufacture of the membranes has not been examined by BRANZ, but details regarding the quality and composition of the materials used were obtained by BRANZ and found to be satisfactory.
- 22.2 BRANZ has taken note of Technical Assessments and certifications covering quality aspects associated with the product.
- 22.3 The quality of the supply of products to the New Zealand market is the responsibility of Equus Industries Ltd.
- 22.4 Quality on-site is the responsibility of the Equus Industries Ltd licensed and trained installers.
- 22.5 Designers are responsible for the building design, and building contractors are responsible for the quality of construction of substrate systems in accordance with the instructions of Equus Industries Ltd and this Appraisal.
- 22.6 Building owners are responsible for the maintenance of the membrane systems in accordance with the instructions of Equus Industries Ltd and this Appraisal.



**BRANZ Appraised**  
Appraisal No. 520 [2019]

**BRANZ Appraisal**  
Appraisal No. 520 [2019]  
23 May 2019

NOVA-SK, NOVAFLEX AND  
POLIBIT ROOF AND DECK  
WATERPROOFING MEMBRANES

## Sources of Information

- AS/NZS 1170:2002 Structural design actions.
- AS/NZS 2269:2012 Plywood – structural.
- AS/NZS 4020:2018 Testing of products for use in contact with drinking water.
- BRANZ Good Practice Guide: Membrane Roofing, 2nd Edition, 2015.
- NZS 3101:2006 The design of concrete structures.
- NZS 3604:2011 Timber-framed buildings.
- Ministry of Business, Innovation and Employment Record of amendments - Acceptable Solutions, Verification Methods and handbooks.
- The Building Regulations 1992.

## Amendments

### Amendment No. 1 dated 26 March 2021

This Appraisal has been amended to update the Appraisal holder and update the technical specifications.

### Amendment No. 2 dated 08 June 2023

This Appraisal has been amended to update the Appraisal title, manufacturer details and update the technical information.



**BRANZ Appraised**  
Appraisal No. 520 [2019]

**BRANZ Appraisal**  
Appraisal No. 520 [2019]  
23 May 2019

NOVA-SK, NOVAFLEX AND  
POLIBIT ROOF AND DECK  
WATERPROOFING MEMBRANES



In the opinion of BRANZ, **Nova-Sk, Novaflex and Polibit Roof And Deck Waterproofing Membranes** are fit for purpose and will comply with the Building Code to the extent specified in this Appraisal provided they are used, designed, installed and maintained as set out in this Appraisal.

The Appraisal is issued only to **Equus Industries Ltd**, and is valid until further notice, subject to the Conditions of Appraisal.

### Conditions of Appraisal

1. This Appraisal:
  - a) relates only to the product as described herein;
  - b) must be read, considered and used in full together with the Technical Literature;
  - c) does not address any Legislation, Regulations, Codes or Standards, not specifically named herein;
  - d) is copyright of BRANZ.
2. **Equus Industries Ltd**:
  - a) continues to have the product reviewed by BRANZ;
  - b) shall notify BRANZ of any changes in product specification or quality assurance measures prior to the product being marketed;
  - c) abides by the BRANZ Appraisals Services Terms and Conditions;
  - d) warrants that the product and the manufacturing process for the product are maintained at or above the standards, levels and quality assessed and found satisfactory by BRANZ pursuant to BRANZ's Appraisal of the product.
3. BRANZ makes no representation or warranty as to:
  - a) the nature of individual examples of, batches of, or individual installations of the product, including methods and workmanship;
  - b) the presence or absence of any patent or similar rights subsisting in the product or any other product;
  - c) any guarantee or warranty offered by **Equus Industries Ltd**.
4. Any reference in this Appraisal to any other publication shall be read as a reference to the version of the publication specified in this Appraisal.
5. BRANZ provides no certification, guarantee, indemnity or warranty, to **Equus Industries Ltd** or any third party.

For BRANZ



**Chelydra Percy**

Chief Executive

Date of Issue:

23 May 2019

# NOVA-SK

## Self-adhesive waterproofing membrane

January 2024

**DESCRIPTION:**

NOVA-SK is a self-adhesive bitumen waterproofing membrane, industrially manufactured by impregnation of the reinforcement with the waterproofing compound based on distilled bitumen modified with thermoplastic elastomeric polymers of the latest generation, which gives the compound superior technical characteristics and adhesive characteristic.

The composite reinforcement, made of non woven spunbond polyester in combination with fibreglass, conveys high mechanical characteristics, excellent dimensional stability and elastic performance. Shaping of sheets, straightness, dimensional and surface uniformity are accomplished by hot calendaring of the mass at hot melt fluid state.

The upper surface is coated with thermofusible polyolefin film or non woven polypropylene and selvedge protected by anti-adhesive removable file for easy welding overlap. The lower surface is protected with an anti-adhesive removable film.

**PACKAGING:**

Properties	Testing Method	NOVA-SK
Roll length	EN 1848-1:1999	10 m
Roll width	EN 1848-1:1999	1 m



**TECHNICAL DATA:**

Properties	Norm	Value	Unit	Tolerance
Thickness	EN1849-1:1999	3	(mm)	± 0.2
Straightness	EN1848-1:1999	Passed	-	20 mm/10 m
Flexibility at low temperature (pliability)	EN1109:2013	-25	(°C)	≤
Heat flow resistance	EN1110:2010	90	(°C)	≥
Watertightness	EN1928-B:2000	200	(kPa)	≥
Watertightness	EN1928-B-2000	Passed	(kPa)	≥ 60 kPa/2h
Water vapour transmission properties	EN1931:2000	65.000	(μ)	-
Watertightness	EN1928-A W1:2000	Passed	(kPa)	≥ 2 kPa/2h
Properties	Norm	Value M.d.C.d.	Unit	Tolerance
Tensile properties: maximum tensile strength	EN12311-1:1999	500/450	(N/50mm)	-29%
Tensile properties: elongation at break	EN12311-1:1999	40/40	(%)	-15
Resistance to tearing (nail shank)	EN12310-1:1999	100/100	(N)	-30%
Dimensional stability	EN1107-1:1999	±0.3/±0.3	(%)	≤
Shear resistance of joints	EN12317-1:1999	500/450	(N/50mm)	-20%
Resistance to static puncture	EN12730-A:2015	NPD		
Resistance to impact	EN12691-A:2006	NPD		
External fire performance (note 1)	EN1187:2012/ EN13501-5:2005 +A1:2009	Froof	Class	-

Equus Industries Ltd. 4 Sheffield St, Blenheim 7274 | Phone: 03 578 0214 | Email: info@equus.nz | Web: www.equus.nz

The information in this product data sheet is based on our experience and testing. It represents the latest information available at the time of printing, but no guarantee of its accuracy is made or implied, nor responsibility taken for use to which this information may be put. We reserve the right to alter or up-date information parameters and formulations at any time without notice.

# NOVA-SK

## Self-adhesive waterproofing membrane

January 2024

### TECHNICAL DATA continued:

Properties	Norm	Value M.d.C.d.	Unit	Tolerance
Reaction to fire	EN11925-2:2010/ EN13501-12007 +A1:2009	E	Class	-
Root resistance	EN13948:2007	NPD		
Visual defects	EN1850-1:2001	Passed	-	-
Durability: Flexibility at low temperature after artificial ageing	EN1296:2000/ EN1109:2013	-25	(°C)	+15
Durability: Flow resistance at elevated temperature after artificial ageing	EN1296:2000/ EN1110:2010	NPD		
Durability: Watertightness after artificial ageing	EN1296:2000/ EN1928-B:2000	Passed	(kPa)	≥ 60
Durability: Watertightness against chemicals	EN1296:2000/ EN1847:2009	NPD		
Artificial ageing by long term exposure to the combination of UV radiation and elevated temperature and heat: Tensile strength	EN1296:2000/ EN12311-1:1999	NPD		
Artificial ageing by long term exposure to the combination of UV radiation and elevated temperature and heat: Elongation	EN1296:2000/ EN12311-1:1999	NPD		
Artificial ageing by long term exposure to the combination of UV radiation and elevated temperature and heat: Watertightness	EN1296:2000/ EN1298-A:2000	W1	Class	-
Durability: Resistance to water vapour after artificial ageing	EN1296:2000/ EN1931:2000	Passed	(μ)	± 50 % v.i.
Durability: Chemical resistance	EN1847:2009/ EN1931:2000	Passed	(μ)	± 50 % v.i.

### SCOPE OF USE:

NOVA-SK is a high performance membrane best suited for areas where open flame installation is not advisable. It is used as a self-adhesive base sheet in the Soprema NOVA-SK Roof & Deck Membrane System and the NOVATHERM Warm Roof System. The product is glued via a self-adhesive 'peel and stick' application and can be used over plywood, cross-laminated timber (CLT), and roof cover board substrates. Along with the NOVA-SK MINERAL or other approved cap sheet the membrane forms a two-layer waterproof membrane designed for roofs, decks, balconies, terraces and podiums. This membrane can also be used as a self-adhered vapour barrier in an Equus Warm Roof system.

It is suitable for new builds and refurbishments, residential and commercial construction. The excellent mechanical characteristics and high level thermo-dynamic stability make it suitable for any climate conditions, location or wind zone in New Zealand.

Suitable for other waterproofing applications with written approval by Equus Industries Ltd.

### APPLICATION PROCEDURE:

The high self-adhesive properties of the waterproofing compound allow the application without flame, simply removing the lower anti-adhesive removable film. In particular situations, it could be applied with hot air generator.

The application of the membrane must be carried out in good weather conditions, when the temperature is over 10°C, and after the substrate has been adequately cleaned and prepared.

Equus Industries Ltd. 4 Sheffield St, Blenheim 7274 | Phone: 03 578 0214 | Email: [info@equus.nz](mailto:info@equus.nz) | Web: [www.equus.nz](http://www.equus.nz)

The information in this product data sheet is based on our experience and testing. It represents the latest information available at the time of printing, but no guarantee of its accuracy is made or implied, nor responsibility taken for use to which this information may be put. We reserve the right to alter or up-date information parameters and formulations at any time without notice.



# NOVA-SK

## Self-adhesive waterproofing membrane

January 2024

### CONDITIONS OF USE:

Written approval is required for this membrane to be used on a substrate or in a waterproofing system not outlined in the standard Equus specifications. The membrane shall always be over laid with a bitumen membrane cap sheet, as out lined in an Equus standard specification.

The product must be installed by a Certified Equus Applicator. Verification of their status can be confirmed by a current applicator certificate or by contacting Equus Industries Ltd. Any installation must be done in accordance with the latest specifications and technical documentation, or with written approval by Equus Industries Ltd.

### BUILDING CODE COMPLIANCE:

**B2 Durability** - B2.3.1 (b), NOVA-SK has a durability of at least 15 years, when installed with the correct specification, installation and maintenance. See CodeMark CMNZ70151, BRANZ Appraisal 520.

**E2 External moisture** - E2.3.1, E2.3.2, E2.3.7 Test data, together with in-service history in New Zealand and internationally, of the correctly installed NOVA-SK membrane over correctly designed and constructed substrates, show that the membrane successfully resists the ingress of moisture. See CodeMark CMNZ70151, BRANZ Appraisal 520.

**F2 Hazardous building materials** - F2.3.1 Well known experience with the type of materials used together with in-service history, show that NOVA-SK complies with this performance requirement. Refer to SDS at [www.equus.nz](http://www.equus.nz)

### NORMS AND CERTIFICATIONS:

EN13707; EN13969 -1381 - 1381-CPR-415; EN13970 - 1211 - Tb51261/06e; EN13970 - 1211 - Ta51262/06e; EN13859-1 - 1211 - 51 -14-0018

### SUPPORTING DOCUMENTATION:

The following additional documentation supports the compliance statements:

Title (type)	Version	URL
CodeMark Certificate CMNZ70151	30 June 2023	<a href="https://equus.nz/content/reports/codemark-soprema-waterproofing-membranes.pdf">https://equus.nz/content/reports/codemark-soprema-waterproofing-membranes.pdf</a>
BRANZ Appraisal No. 520	8 June 2023	<a href="https://equus.nz/content/reports/branz-appraisal-nova-sk-520.pdf">https://equus.nz/content/reports/branz-appraisal-nova-sk-520.pdf</a>

### STORAGE:

The product is packed as standing rolls on wooden pallets wrapped with thermoshrinking protective hoods. Rolls must be stored in an upright position, without stacking the pallets to avoid deformations which can compromise the correct application of the membrane. The product must be stored indoors, protected from heat and frost.

### WARNINGS AND BANS:

Is the building product/building product line subject to warning or ban under section 26 of the Building Act 2004?	No
--	----

### MANUFACTURERS CONTACT DETAILS:

Manufacture location	Italy
Legal and trading name of manufacturer	Soprema New Zealand Limited
Manufacturer address for service	Level 3, Candida Building 4, 61 Constellation Drive, Mairangi Bay, Auckland 0630, New Zealand
Manufacturer website	<a href="http://www.soprema.com.au">www.soprema.com.au</a>
Manufacturer email	<a href="mailto:info@soprema.com.au">info@soprema.com.au</a>
Manufacturer phone number	+61 3 9221 6230
Manufacturer NZBN	9429050312962

Equus Industries Ltd. 4 Sheffield St, Blenheim 7274 | Phone: 03 578 0214 | Email: [info@equus.nz](mailto:info@equus.nz) | Web: [www.equus.nz](http://www.equus.nz)

The information in this product data sheet is based on our experience and testing. It represents the latest information available at the time of printing, but no guarantee of its accuracy is made or implied, nor responsibility taken for use to which this information may be put. We reserve the right to alter or up-date information parameters and formulations at any time without notice.

# NOVA-SK MINERAL

## Self-adhesive waterproofing membrane cap sheet

January 2024

### DESCRIPTION:

NOVA-SK MINERAL is a self-adhesive bitumen waterproofing membrane, industrially manufactured by impregnation of the reinforcement with the waterproofing compound based on distilled bitumen modified with thermoplastic elastomeric polymers of the latest generation, which gives the compound superior technical characteristics and adhesive characteristic.

The composite reinforcement, made of non woven spunbond polyester in combination with fibreglass, conveys high mechanical characteristics, excellent dimensional stability and elastic performance.

Shaping of sheets, straightness, dimensional and surface uniformity are accomplished by hot calendaring of the mass at hot melt fluid state. It is a self-protected membrane, the upper surface is coated with coloured slate chips and selvedge protected by an anti-adhesive removable film.



CMNZ70151



### PACKAGING:

Properties	Testing Method	NOVA-SK MINERAL
Roll length	EN 1848-1:1999	10 m
Roll width	EN 1848-1:1999	1 m

### TECHNICAL DATA:

Properties	Norm	Value	Unit	Tolerance
Thickness	EN1849-1:1999	4.5	(kg/m <sup>2</sup> )	± 10%
Straightness	EN1848-1:1999	Passed	-	20 mm/10 m
Flexibility at low temperature (pliability)	EN1109:2013	-25	(°C)	≤
Heat flow resistance	EN1110:2010	90	(°C)	≥
Watertightness	EN1928-B:2000	200	(kPa)	≥
Watertightness	EN1928-B:2000	Passed	(kPa)	2 kPa/2h
Water vapour transmission properties	EN1931:2000	20.000	(μ)	-
Properties	Norm	Value M.d.C.d.	Unit	Tolerance
Tensile properties: maximum tensile strength	EN12311-1:1999	500/300	(N/50mm)	-20%
Tensile properties: elongation at break	EN12311-1:1999	30/30	(%)	-15
Resistance to tearing (nail shank)	EN12310-1:1999	100/100	(N)	-30%
Dimensional stability	EN1107-1:1999	±0.3/±0.3	(%)	≤
Shear resistance of joints	EN12317-1:1999	500/300	(N/50mm)	-20%
Resistance to static puncture	EN12730-A:2015	NPD		
Resistance to impact	EN12691-A:2006	NPD		
External fire performance (note 1)	EN1187:2012/ EN13501-5:2005 +A1:2009	Froof	Class	-
Reaction to fire	EN11925-2:2010/ EN13501-1:2007 +A1:2009	E	Class	-

Equus Industries Ltd. 4 Sheffield St, Blenheim 7274 | Phone: 03 578 0214 | Email: info@equus.nz | Web: www.equus.nz

The information in this product data sheet is based on our experience and testing. It represents the latest information available at the time of printing, but no guarantee of its accuracy is made or implied, nor responsibility taken for use to which this information may be put. We reserve the right to alter or up-date information parameters and formulations at any time without notice.

# NOVA-SK MINERAL

## Self-adhesive waterproofing membrane cap sheet

January 2024

### TECHNICAL DATA continued:

Properties	Norm	Value M.d.C.d.	Unit	Tolerance
Root resistance	EN13948:2007	NPD		
Visual defects	EN1850-1:2001	Passed	-	-
Determination of adhesion of granules (loss)	EN1297:2004	Passed	(%)	< 30
Durability: Flexibility at low temperature after artificial ageing	EN1296:2000/ EN1109:2013	-25	(°C)	+15
Durability: Flow resistance at elevated temperature after artificial ageing	EN1296:2000/ EN1110:2010	NPD		
Durability: Watertightness after artificial ageing	EN1296:2000/ EN1928-B:2000	Passed	(kPa)	≥ 60
Durability: Watertightness against chemicals	EN1296:2000/ EN1847:2009	NPD		
Artificial ageing by long term exposure to the combination of UV radiation and elevated temperature and heat: Tensile strength	EN1296:2000/ EN12311-1:1999	NPD		
Artificial ageing by long term exposure to the combination of UV radiation and elevated temperature and heat: Elongation	EN1296:2000/ EN12311-1:1999	NPD		
Artificial ageing by long term exposure to the combination of UV radiation and elevated temperature and heat: Watertightness	EN1296:2000/ EN1298-A:2000	W1	Class	-

### SCOPE OF USE:

NOVA-SK MINERAL is a high performance membrane best suited for areas where open flame installation is not advisable. It is used as a self-adhesive cap sheet in the SOPREMA NOVA-SK Roof & Deck Membrane System and the NOVATHERM Warm Roof System. The product is glued via a self-adhesive 'peel and stick' application and can be used over plywood, cross-laminated timber (CLT), and roof cover board substrates. Along with the NOVA-SK base sheet the membrane forms a two-layer waterproof membrane designed for roofs, decks, balconies, terraces and podiums.

It is suitable for new builds and refurbishments, residential and commercial construction. The excellent mechanical characteristics and high level thermo-dynamic stability make it suitable for any climate conditions, location or wind zone in New Zealand.

Suitable for other waterproofing applications with written approval by Equus Industries Ltd.

### APPLICATION PROCEDURE:

The high self-adhesive properties of the waterproofing compound allow the application without flame, simply removing the lower anti-adhesive removable film. In particular situations, it could be applied with hot air generator.

The application of the membrane must be carried out in good weather conditions, when the temperature is over 10°C, and after the substrate has been adequately cleaned and prepared.

### CONDITIONS OF USE:

Written approval is required for this membrane to be used on a substrate or in a waterproofing system not outlined in the standard Equus specifications. The membrane shall always be overlaid with a bitumen membrane cap sheet, as outlined in an Equus standard specification.

Equus Industries Ltd. 4 Sheffield St, Blenheim 7274 | Phone: 03 578 0214 | Email: info@equus.nz | Web: www.equus.nz

The information in this product data sheet is based on our experience and testing. It represents the latest information available at the time of printing, but no guarantee of its accuracy is made or implied, nor responsibility taken for use to which this information may be put. We reserve the right to alter or up-date information parameters and formulations at any time without notice.

# NOVA-SK MINERAL

## Self-adhesive waterproofing membrane cap sheet

January 2024

The product must be installed by a Certified Equus Applicator. Verification of their status can be confirmed by a current applicator certificate or by contacting Equus Industries Ltd. Any installation must be done in accordance with the latest specifications and technical documentation, or with written approval by Equus Industries Ltd.

### BUILDING CODE COMPLIANCE:

**B2 Durability** - B2.3.1 (b), NOVA-SK MINERAL has a durability of at least 15 years, when installed with the correct specification, installation and maintenance. See CodeMark CMNZ70151, BRANZ Appraisal 520.

**E2 External moisture** - E2.3.1, E2.3.2, E2.3.7 Test data, together with in-service history in New Zealand and internationally, of the correctly installed NOVA-SK MINERAL membrane over correctly designed and constructed substrates, show that the membrane successfully resists the ingress of moisture. See CodeMark CMNZ70151, BRANZ Appraisal 520.

**F2 Hazardous building materials** - F2.3.1 Well known experience with the type of materials used together with in-service history, show that NOVA-SK MINERAL complies with this performance requirement. Refer to SDS at [www.equus.nz](http://www.equus.nz)

### NORMS AND CERTIFICATIONS:

EN13707; EN13969 -1381 - 1381-CPR-415; EN13859-1 - 1211 - 51-18-0025

### SUPPORTING DOCUMENTATION:

The following additional documentation supports the compliance statements:

Title (type)	Version	URL
CodeMark Certificate CMNZ70151	30 June 2023	<a href="https://equus.nz/content/reports/codemark-soprema-waterproofing-membranes.pdf">https://equus.nz/content/reports/codemark-soprema-waterproofing-membranes.pdf</a>
BRANZ Appraisal No. 520	8 June 2023	<a href="https://equus.nz/content/reports/branz-appraisal-nova-sk-520.pdf">https://equus.nz/content/reports/branz-appraisal-nova-sk-520.pdf</a>

### STORAGE:

The product is packed as standing rolls on wooden pallets wrapped with thermoshinking protective hoods. Rolls must be stored in an upright position, without stacking the pallets to avoid deformations which can compromise the correct application of the membrane. The product must be stored indoors, protected from heat and frost.

### WARNINGS AND BANS:

Is the building product/building product line subject to warning or ban under section 26 of the Building Act 2004?	No
--	----

### MANUFACTURERS CONTACT DETAILS:

Manufacture location	Italy
Legal and trading name of manufacturer	Soprema New Zealand Limited
Manufacturer address for service	Level 3, Candida Building 4, 61 Constellation Drive, Mairangi Bay, Auckland 0630, New Zealand
Manufacturer website	<a href="http://www.soprema.com.au">www.soprema.com.au</a>
Manufacturer email	<a href="mailto:info@soprema.com.au">info@soprema.com.au</a>
Manufacturer phone number	+61 3 9221 6230
Manufacturer NZBN	9429050312962

Equus Industries Ltd. 4 Sheffield St, Blenheim 7274 | Phone: 03 578 0214 | Email: [info@equus.nz](mailto:info@equus.nz) | Web: [www.equus.nz](http://www.equus.nz)

The information in this product data sheet is based on our experience and testing. It represents the latest information available at the time of printing, but no guarantee of its accuracy is made or implied, nor responsibility taken for use to which this information may be put. We reserve the right to alter or up-date information parameters and formulations at any time without notice.

# EQUUS PEEL AND STICK PRIMER

## Primer for self-adhesive waterproofing membranes

January 2024

**DESCRIPTION:**

Equus Peel and Stick Primer is a rubber based adhesive solvent solution which is specifically formulated to provide excellent adhesion with the Equus self-adhesive Waterproofing Membranes under many kinds of surface conditions. Equus Peel and Stick Primer is an integral part of Equus self-adhesive Waterproofing Systems and sufficient primer must be used on dry surfaces to condition them to be dust free so that the substrate is suitable for the self-adhesive application of Equus Waterproofing Membranes.

**USES:**

Used to prime all structural concrete, masonry, or wood surfaces on which waterproofing membranes will be used. Designed to be used on applications down to -4°C.

May be used on horizontal surfaces, but remains tacky, and precautions must be used in this application to prevent contamination of the Primer surface prior to installation of the membrane.

Must be used on all concrete block and brick wall conditions.

Do not use on EPS sheet or block. In this case use Equus EPS Primer.

**APPLICATION:**

Equus Peel and Stick Primer may be applied with roller, brush or spray. A roller with a heavy nap should be used to carry sufficient material to the area being primed.

Apply all Equus Peel and Stick Primer to a clean, dry, dust free and frost free surface at a coverage of approximately 6-8 sqm/litre. The primer should be spread sufficiently to avoid areas of excess material. Areas of excess material will lengthen the drying time on the application of the primer.

Equus Peel and Stick Primer is to dry a minimum of one hour - may dry quicker due to drying conditions, such as wind and warmth.

This product is red in colour and will remain tacky when dry. The application of primer should be limited to what can be covered with Waterproofing Membrane in one working day. Any areas not covered with membrane during the day must be reprimed - be sure to cover all open containers when not applying primer, as the primer is volatile.

**SAFETY, STORAGE AND HANDLING:**

Equus Peel and Stick Primer vapours are flammable. User should review the Safety Data Sheet (SDS) for this product and follow safety instructions listed therein.

**TRANSPORT CLASSIFICATION:**

IMDG Class 3.1

UN No. 1294

Equus Industries Ltd. 4 Sheffield St, Blenheim 7274 | Phone: 03 578 0214 | Email: [info@equus.nz](mailto:info@equus.nz) | Web: [www.equus.nz](http://www.equus.nz)

The information in this product data sheet is based on our experience and testing. It represents the latest information available at the time of printing, but no guarantee of its accuracy is made or implied, nor responsibility taken for use to which this information may be put. We reserve the right to alter or up-date information parameters and formulations at any time without notice.



To see or download full size details click here

- 1 Plywood Deck
- 2 EQUUS Peel & Stick primer
- 3 EQUUS NOVA-SK base sheet (self-adhered)
- 4 EQUUS NOVA-SK MINERAL cap sheet

PROJECT :	Cold Roof on Plywood Standard Detail
TITLE :	Roof Bulk Up Detail
NUMBER :	SNCRP-D2a
SCALE :	1:2
DRAWN BY :	NKT
DATE :	09-Dec-2021
REVISED :	

**EQUUS** AUTHORIZED DISTRIBUTOR **SOPREMA**

- 1 Plywood Deck
- 2 EQUUS Peel & Stick primer
- 3 EQUUS NOVA-SK base sheet (self-adhered)
- 4 EQUUS NOVA-SK MINERAL cap sheet
- 5 EQUUS base sheet, dressed to Parapet as separate piece
- 6 EQUUS cap sheet, dressed to Parapet as separate piece
- 7 EQUUS bitumen fillet or approved alternative
- 8 Cap Flashing by others

PROJECT :	Cold Roof on Plywood Standard Detail
TITLE :	Parapet with cap flashing
NUMBER :	SNCRP-D1a
SCALE :	1:2
DRAWN BY :	NKT
DATE :	09-Dec-2021
REVISED :	

**EQUUS** AUTHORIZED DISTRIBUTOR **SOPREMA**

- 1 Plywood Deck
- 2 EQUUS Peel & Stick primer
- 3 EQUUS NOVA-SK base sheet (self-adhered)
- 4 EQUUS NOVA-SK MINERAL cap sheet
- 5 EQUUS NOVA-SK MINERAL cap sheet
- 6 Aloof Dome Clamp Ring Drain

PROJECT :	Cold Roof on Plywood Standard Detail
TITLE :	Aloof dome clamp ring drain
NUMBER :	SNCRP-D2a
SCALE :	1:3
DRAWN BY :	NKT
DATE :	09-Dec-2021
REVISED :	

**EQUUS** AUTHORIZED DISTRIBUTOR **SOPREMA**

- 1 Plywood Deck
- 2 EQUUS Peel & Stick primer
- 3 EQUUS NOVA-SK base sheet (self-adhered)
- 4 EQUUS NOVA-SK MINERAL cap sheet
- 5 Aqua-night HFlow roof drain

PROJECT :	Cold Roof on Plywood Standard Detail
TITLE :	Aqua-night HFlow roof drain
NUMBER :	SNCRP-D2b
SCALE :	1:3
DRAWN BY :	NKT
DATE :	09-Dec-2021
REVISED :	

**EQUUS** AUTHORIZED DISTRIBUTOR **SOPREMA**

- 1 Plywood Deck
- 2 EQUUS Peel & Stick primer
- 3 EQUUS NOVA-SK base sheet (self-adhered)
- 4 EQUUS NOVA-SK MINERAL cap sheet
- 5 EQUUS bitumen fillet or approved alternative
- 6 EQUUS Base Sheet, as separate piece connected to Drainage
- 7 EQUUS Cap Sheet, as separate piece connected to Drainage
- 8 Aloof Dome Clamp Ring Drain

PROJECT :	Cold Roof on Plywood Standard Detail
TITLE :	Internal Gutter and parapet - Aloof drain
NUMBER :	SNCRP-D3a
SCALE :	1:4
DRAWN BY :	NKT
DATE :	09-Dec-2021
REVISED :	

**EQUUS** AUTHORIZED DISTRIBUTOR **SOPREMA**

- 1 Plywood Deck
- 2 EQUUS Peel & Stick primer
- 3 EQUUS NOVA-SK base sheet (self-adhered)
- 4 EQUUS NOVA-SK MINERAL cap sheet
- 5 EQUUS bitumen fillet or approved alternative
- 6 EQUUS Base Sheet, as separate piece connected to Drainage
- 7 EQUUS Cap Sheet, as separate piece connected to Drainage
- 8 Aqua-night HFlow roof drain

PROJECT :	Cold Roof on Plywood Standard Detail
TITLE :	Internal Gutter and parapet - Aqua-night HFlow roof drain
NUMBER :	SDCRP-D3b
SCALE :	1:4
DRAWN BY :	NKT
DATE :	09-Dec-2021
REVISED :	

**EQUUS** AUTHORIZED DISTRIBUTOR **SOPREMA**

- 1 Plywood Deck
- 2 EQUUS Peel & Stick primer
- 3 EQUUS NOVA-SK base sheet (self-adhered)
- 4 EQUUS base sheet as separate piece
- 5 EQUUS NOVA-SK MINERAL cap sheet
- 6 EQUUS cap sheet as separate piece
- 7 EQUUS bitumen fillet or approved alternative

PROJECT :	Cold Roof on Plywood Standard Detail
TITLE :	Internal Center Gutter
NUMBER :	SNCRP-D3c
SCALE :	1:3
DRAWN BY :	NKT
DATE :	17-Jun-2022
REVISED :	

**EQUUS** AUTHORIZED DISTRIBUTOR **SOPREMA**

- 1 Plywood Deck
- 2 EQUUS Peel & Stick primer
- 3 EQUUS NOVA-SK base sheet (self-adhered)
- 4 EQUUS NOVA-SK MINERAL cap sheet
- 5 EQUUS cap sheet as separate piece over Plywood Plinth
- 6 Plywood Plinth
- 7 EQUUS Alscan Mastic 2200 bitumen sealant
- 8 EQUUS Alscan Flashing (Quadro) or (Equis Masticory)
- 9 SHS penetration

Note: check compatibility with pipe material

PROJECT :	Cold Roof on Plywood Standard Detail
TITLE :	Pipe Penetration
NUMBER :	SNCRP-D4a
SCALE :	1:3
DRAWN BY :	NKT
DATE :	17-Jun-2022
REVISED :	

**EQUUS** AUTHORIZED DISTRIBUTOR **SOPREMA**

Shrink Sleeve	
Internal diameter	Sleeve shrinkable to
18 mm	4 mm
22 mm	12 mm
42 mm	22 mm
55 mm	42 mm
66 mm	55 mm
88 mm	66 mm
110 mm	88 mm

- 1 Plywood Deck
- 2 EQUUS Peel & Stick primer
- 3 EQUUS NOVA-SK base sheet (self-adhered)
- 4 EQUUS base sheet, over Plywood Plinth
- 5 EQUUS NOVA-SK MINERAL cap sheet
- 6 EQUUS cap sheet, as separate piece over Shrink Sleeve
- 7 Plywood Plinth
- 8 Bitumen Flange attached to Shrink Sleeve Body
- 9 EQUUS Alscan Mastic 2200 bitumen sealant
- 10 Shrink Sleeve Body internal diameter 55 mm
- 11 Shrink Sleeve

PROJECT :	Cold Roof on Plywood Standard Detail
TITLE :	Pipe Penetration with Shrink Sleeve
NUMBER :	SNCRP-D4b
SCALE :	1:4
DRAWN BY :	NKT
DATE :	17-Jun-2022
REVISED :	

**EQUUS** AUTHORIZED DISTRIBUTOR **SOPREMA**

**STEP 2: Fixing of the Equipment**

- 1 Plywood Deck
- 2 EQUUS Peel & Stick primer
- 3 EQUUS NOVA-SK base sheet (self-adhered)
- 4 EQUUS NOVA-SK MINERAL cap sheet
- 5 EQUUS cap sheet as separate piece over Batten
- 6 Roof Equipment
- 7 EPDM Washer under Screwhead
- 8 Timber Roof Batten

**STEP 1: Fixing of the batten**

PROJECT :	Cold Roof on Plywood Standard Detail
TITLE :	Roof Equipment Support Batten
NUMBER :	SNCRP-D5a
SCALE :	1:4
DRAWN BY :	NKT
DATE :	17-Jun-2022
REVISED :	

**EQUUS** AUTHORIZED DISTRIBUTOR **SOPREMA**

**STEP 2: Fixing of the Equipment**

- 1 Plywood Deck
- 2 EQUUS Peel & Stick primer
- 3 EQUUS NOVA-SK base sheet (self-adhered)
- 4 EQUUS NOVA-SK MINERAL cap sheet
- 5 EQUUS cap sheet as separate piece over Batten
- 6 Roof Equipment
- 7 EPDM Washer under Screwhead
- 8 Timber Roof Batten

**STEP 1: Fixing of the batten**

PROJECT :	Cold Roof on Plywood Standard Detail
TITLE :	Roof Equipment Support Batten (Optional)
NUMBER :	SNCRP-D5b
SCALE :	1:4
DRAWN BY :	NKT
DATE :	17-Jun-2022
REVISED :	

**EQUUS** AUTHORIZED DISTRIBUTOR **SOPREMA**

- 1 Plywood Deck
- 2 EQUUS Peel & Stick primer
- 3 EQUUS NOVA-SK base sheet (self-adhered)
- 4 EQUUS NOVA-SK MINERAL cap sheet
- 5 EQUUS cap sheet as separate piece
- 6 Extra triangular piece of EQUUS cap sheet to divert water
- 7 EQUUS bitumen fillet or approved alternative
- 8 Skylight Jowery

PROJECT :	Cold Roof on Plywood Standard Detail
TITLE :	Skylight/Roof hatch with Extra triangular piece of cap sheet to divert water
NUMBER :	SNCRP-D6a
SCALE :	1:4
DRAWN BY :	NKT
DATE :	17-Jun-2022
REVISED :	

**EQUUS** AUTHORIZED DISTRIBUTOR **SOPREMA**

- 1 Plywood Deck
- 2 EQUUS Peel & Stick primer
- 3 EQUUS NOVA-SK base sheet (self-adhered)
- 4 EQUUS NOVA-SK MINERAL cap sheet
- 5 EQUUS cap sheet as separate piece
- 6 Sloped drainage cricket to divert water around skylight
- 7 EQUUS bitumen fillet or approved alternative
- 8 Skylight Jowery

PROJECT :	Cold Roof on Plywood Standard Detail
TITLE :	Skylight/Roof hatch with diverter
NUMBER :	SNCRP-D6b
SCALE :	1:4
DRAWN BY :	NKT
DATE :	17-Jun-2022
REVISED :	

**EQUUS** AUTHORIZED DISTRIBUTOR **SOPREMA**

- 1 Plywood Deck
- 2 EQUUS Peel & Stick primer
- 3 EQUUS NOVA-SK base sheet (self-adhered)
- 4 EQUUS NOVA-SK MINERAL cap sheet
- 5 18 mm Plywood plinth under Anchor points
- 6 Fall Arrest Anchor
- 7 Toggle fixing
- 8 EQUUS Cap Sheet as separate piece over Anchor point

PROJECT :	Cold Roof on Plywood Standard Detail
TITLE :	Fall restraint
NUMBER :	SNCRP-D7a
SCALE :	1:4
DRAWN BY :	NKT
DATE :	17-Jun-2022
REVISED :	

**EQUUS** AUTHORIZED DISTRIBUTOR **SOPREMA**

- 1 Plywood Deck
- 2 EQUUS Peel & Stick primer
- 3 EQUUS NOVA-SK base sheet (self-adhered)
- 4 EQUUS NOVA-SK MINERAL cap sheet
- 5 Aluminium Flashing treated with EQUUS 'Spay & Go' Primer

PROJECT :	Cold Roof on Plywood Standard Detail
TITLE :	Connection to external gutter
NUMBER :	SNCRP-D8a
SCALE :	1:2
DRAWN BY :	NKT
DATE :	17-Jun-2022
REVISED :	

**EQUUS** AUTHORIZED DISTRIBUTOR **SOPREMA**

- 1 Plywood Deck
- 2 EQUUS Peel & Stick primer
- 3 EQUUS NOVA-SK base sheet (self-adhered)
- 4 EQUUS NOVA-SK MINERAL cap sheet
- 5 Cavity Batten
- 6 EQUUS bitumen fillet or approved alternative
- 7 EQUUS PE Scupper Drain
- 8 EQUUS universal Leaf Catcher
- 9 EQUUS Capsheet, as separate piece over Roof Edge Profile
- 10 EQUUS Roof Edge Profile
- 11 Building wrap boot seal by others
- 12 EQUUS bitumen fillet or approved alternative

PROJECT :	Cold Roof on Plywood Standard Detail
TITLE :	Scupper Drain Detail
NUMBER :	SNCRP-D9a
SCALE :	1:2
DRAWN BY :	NKT
DATE :	17-Jun-2022
REVISED :	

**EQUUS** AUTHORIZED DISTRIBUTOR **SOPREMA**

- 1 EQUUS Peel & Stick primer
- 2 EQUUS NOVA-SK base sheet (self-adhered)
- 3 EQUUS NOVA-SK MINERAL cap sheet
- 4 EQUUS Capsheet as separate piece over Roof edge profile
- 5 EQUUS Roof edge profile
- 6 Wall cladding and building wrap (by others)

PROJECT :	Cold Roof on Plywood Standard Detail
TITLE :	Upstand detail with roof edge profile
NUMBER :	SNCRP-D10a
SCALE :	1:2
DRAWN BY :	NKT
DATE :	17-Jun-2022
REVISED :	

**EQUUS** AUTHORIZED DISTRIBUTOR **SOPREMA**

- 1 Plywood Deck
- 2 EQUUS Peel & Stick primer
- 3 EQUUS NOVA-SK base sheet (self-adhered)
- 4 EQUUS NOVA-SK MINERAL cap sheet
- 5 EQUUS Capsheet as separate piece over Plywood Plinth
- 6 Plywood Plinth
- 7 EQUUS bitumen fillet or approved alternative
- 8 EQUUS Aislan Mastic 2200 bitumen sealant
- 9 Ventilation Pipe

PROJECT :	Cold Roof on Plywood Standard Detail
TITLE :	Ventilation Pipe with plinth Detail
NUMBER :	SNCRP-D11a
SCALE :	1:3
DRAWN BY :	NKT
DATE :	17-Jun-2022
REVISED :	

**EQUUS** AUTHORIZED DISTRIBUTOR **SOPREMA**

① Plywood Deck  
 ② EQUUS Peel & Stick primer  
 ③ EQUUS NOVA-SK base sheet (self-adhered)  
 ④ EQUUS NOVA-SK MINERAL cap sheet  
 ⑤ Timber Plinth  
 ⑥ Monkey Toe Roof Profile Fixing with Neoprene Washer  
 ⑦ EQUUS Capsheet, as separate piece over Timber Plinth

**STEP 2: Fixing of the Monkey Toe Roof Profile**

**STEP 1: Fixing of the Timber Plinth**

PROJECT :	Cold Roof on Plywood Standard Detail
TITLE :	Monkey Toe Walkway Fixing Detail
NUMBER :	SNCRP-D12a
SCALE :	1:4
DRAWN BY :	NKT
DATE :	17-Jun-2022
REVISED :	

EQUUS  
 Cold Roof on Plywood on PV  
 www.equus.co.nz

AUTHORIZED DISTRIBUTOR  
**SOPREMA**

① Plywood Deck  
 ② EQUUS Peel & Stick primer  
 ③ EQUUS NOVA-SK base sheet (self-adhered)  
 ④ EQUUS NOVA-SK MINERAL cap sheet  
 ⑤ EQUUS Alumin Flashing (Quash) or Equus Mataryl  
 ⑥ Electrical Conduit with SBS Flange

PROJECT :	Cold Roof on Plywood Standard Detail
TITLE :	Electrical Conduit
NUMBER :	SNCRP-D13a
SCALE :	1:3
DRAWN BY :	NKT
DATE :	17-Jun-2022
REVISED :	

EQUUS  
 Cold Roof on Plywood on PV  
 www.equus.co.nz

AUTHORIZED DISTRIBUTOR  
**SOPREMA**

① Plywood Deck  
 ② EQUUS Peel & Stick primer  
 ③ EQUUS NOVA-SK base sheet (self-adhered)  
 ④ EQUUS NOVA-SK MINERAL cap sheet  
 ⑤ Timber Plinth, glued to Capsheet  
 ⑥ Clip Ring Fixing with Neoprene Washer into Timber Plinth, but not through Capsheet underneath  
 ⑦ Metal Framing Fixing with Neoprene Washer into Timber Plinth, but not through Capsheet underneath  
 ⑧ EQUUS Capsheet, as separate piece over Timber Plinth

**A. Clip Ring**

**B. Metal Framing**

PROJECT :	Cold Roof on Plywood Standard Detail
TITLE :	Cable Tray Support Fixing Detail
NUMBER :	SNCRP-D14a
SCALE :	1:3
DRAWN BY :	NKT
DATE :	17-Jun-2022
REVISED :	

EQUUS  
 Cold Roof on Plywood on PV  
 www.equus.co.nz

AUTHORIZED DISTRIBUTOR  
**SOPREMA**

① Plywood Gutter  
 ② EQUUS Peel & Stick primer  
 ③ EQUUS NOVA-SK base sheet (self-adhered)  
 ④ EQUUS NOVA-SK MINERAL cap sheet  
 ⑤ EQUUS Cap Sheet as separate piece under window

PROJECT :	Cold Roof on Plywood Standard Detail
TITLE :	Window Gutter Detail
NUMBER :	SNCRP-D15a
SCALE :	1:2
DRAWN BY :	NKT
DATE :	17-Jun-2022
REVISED :	

EQUUS  
 Cold Roof on Plywood on PV  
 www.equus.co.nz

AUTHORIZED DISTRIBUTOR  
**SOPREMA**

① Aluminium Angle Profile 25 x 25 mm  
 ② Primed Timber Blocking  
 ③ Primed Plywood Roof Deck with EQUUS Peel & Stick primer  
 ④ EQUUS NOVA-SK base sheet (self-adhered)  
 ⑤ EQUUS NOVA-SK MINERAL cap sheet  
 ⑥ EQUUS base sheet over Kick Out Flashing  
 ⑦ EQUUS Cap sheet over Kick Out Flashing  
 ⑧ Kick Out Flashing between double layer systems

PROJECT :	Cold Roof on Plywood Standard Detail
TITLE :	Kick Out Flashing Detail
NUMBER :	SNCRP-D16a
SCALE :	NTS
DRAWN BY :	NKT
DATE :	17-Jun-2022
REVISED :	

EQUUS  
 Cold Roof on Plywood on PV  
 www.equus.co.nz

AUTHORIZED DISTRIBUTOR  
**SOPREMA**

① Plywood Deck  
 ② EQUUS Peel & Stick primer  
 ③ EQUUS NOVA-SK base sheet (self-adhered)  
 ④ EQUUS NOVA-SK MINERAL cap sheet  
 ⑤ EQUUS Capsheet as separate piece over Roof edge profile  
 ⑥ EQUUS SOPREMA Roof edge profile  
 ⑦ Wall cladding and building wrap (by others)

PROJECT :	Cold Roof on Plywood Standard Detail
TITLE :	Verge Detail Without Upstand
NUMBER :	SNCRP-D17a
SCALE :	1:2
DRAWN BY :	NKT
DATE :	17-Jun-2022
REVISED :	

EQUUS  
 Cold Roof on Plywood on PV  
 www.equus.co.nz

AUTHORIZED DISTRIBUTOR  
**SOPREMA**

① Plywood Deck  
 ② EQUUS Peel & Stick primer  
 ③ EQUUS NOVA-SK base sheet (self-adhered)  
 ④ EQUUS NOVA-SK MINERAL cap sheet  
 ⑤ EQUUS Capsheet as separate piece over Roof edge profile  
 ⑥ S/S Clasp Ring  
 ⑦ Metal Pipe Penetration with goose-neck and installation Flange

PROJECT :	Cold Roof on Plywood Standard Detail
TITLE :	Pipe Penetration Solar PV Power Conduit
NUMBER :	SNCRP-D18a
SCALE :	NTS
DRAWN BY :	NKT
DATE :	17-Jun-2022
REVISED :	

EQUUS  
 Cold Roof on Plywood on PV  
 www.equus.co.nz

AUTHORIZED DISTRIBUTOR  
**SOPREMA**

① Plywood Deck  
 ② EQUUS Peel & Stick primer  
 ③ EQUUS NOVA-SK base sheet (self-adhered)  
 ④ EQUUS NOVA-SK MINERAL cap sheet  
 ⑤ EQUUS cap sheet, Cover Strip

PROJECT :	Cold Roof on Plywood Standard Detail
TITLE :	Ridge Waterproofing
NUMBER :	SNCRP-D19a
SCALE :	1:2
DRAWN BY :	NKT
DATE :	28-Jun-2022
REVISED :	

EQUUS  
 Cold Roof on Plywood on PV  
 www.equus.co.nz

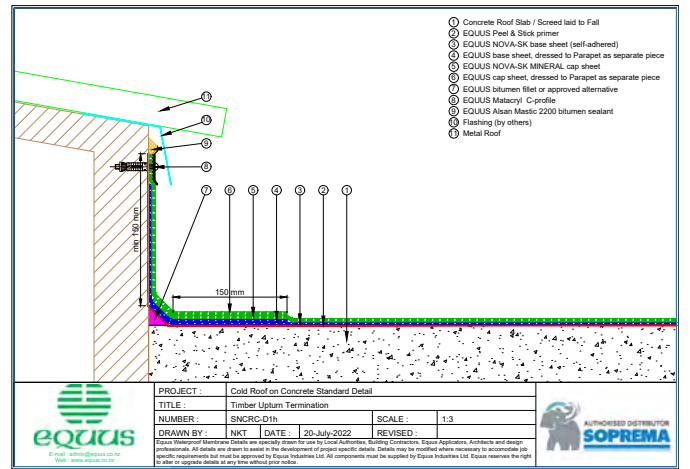
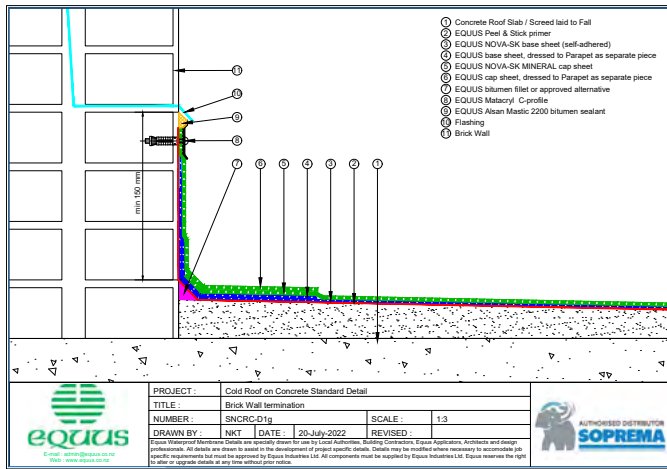
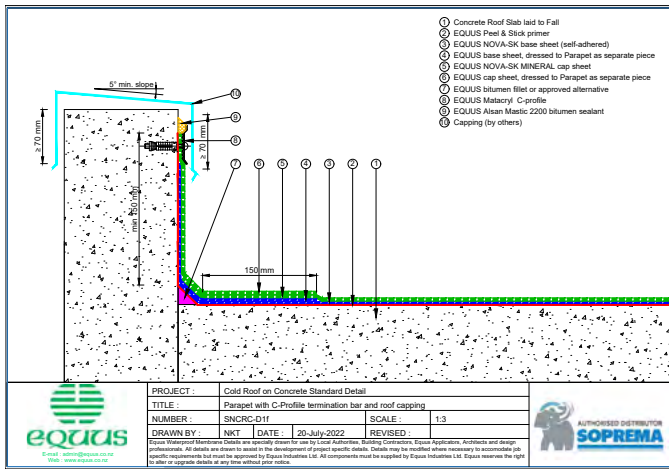
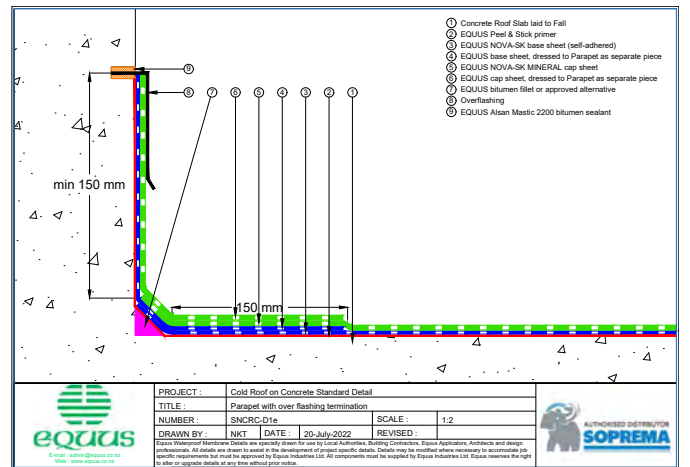
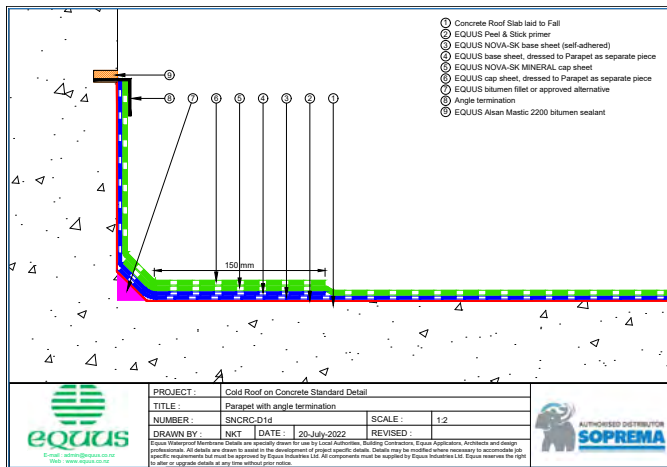
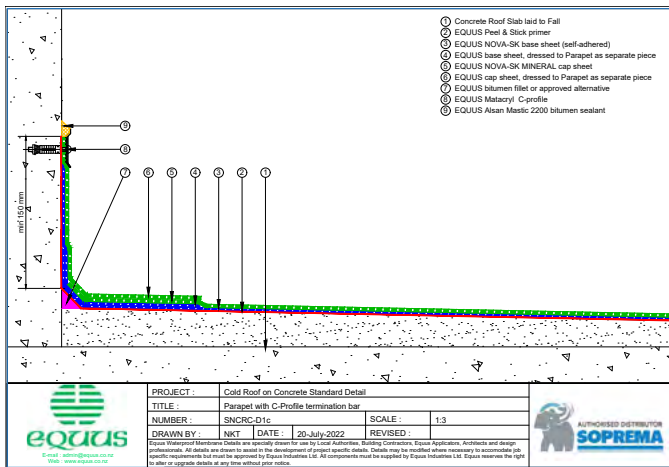
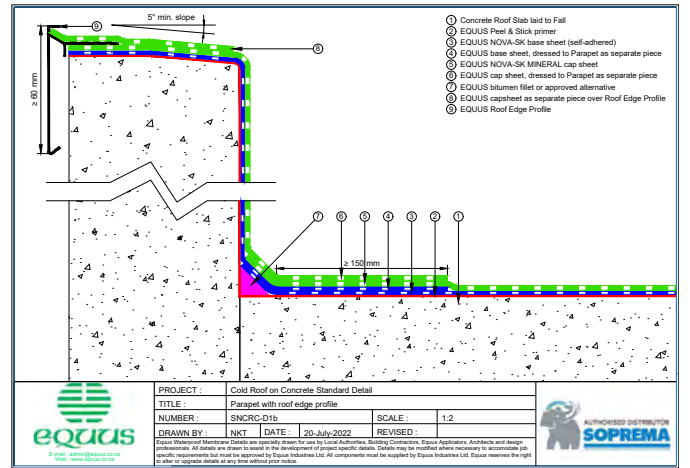
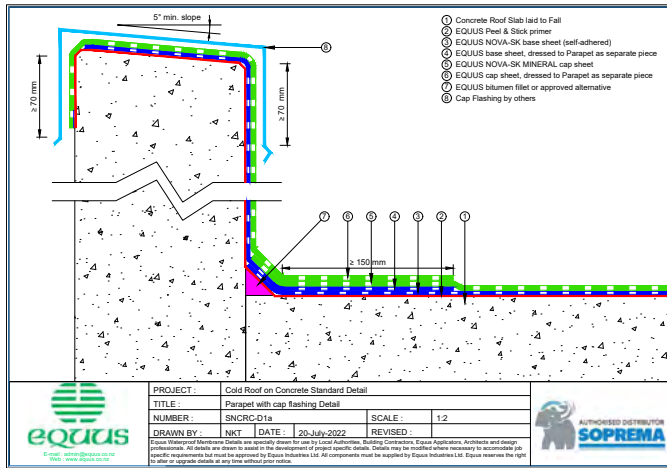
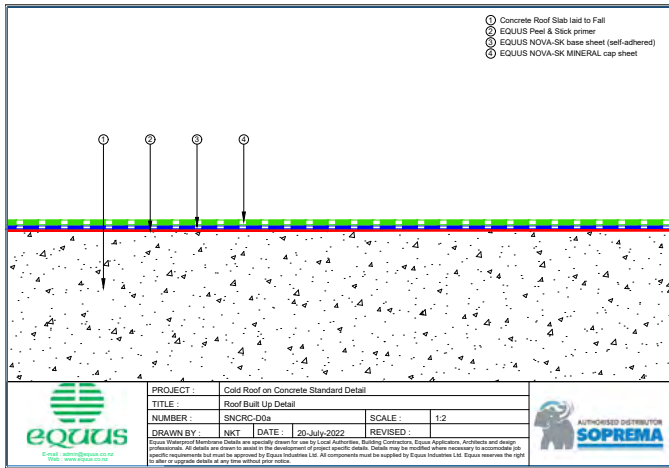
AUTHORIZED DISTRIBUTOR  
**SOPREMA**

① Plywood Deck  
 ② EQUUS Peel & Stick primer  
 ③ EQUUS NOVA-SK base sheet (self-adhered)  
 ④ EQUUS NOVA-SK MINERAL cap sheet  
 ⑤ SOPREMA cap sheet as separate piece over plywood plinth  
 ⑥ Roof edge flashing (by others)

PROJECT :	Cold Roof on Plywood Standard Detail
TITLE :	Roof Edge Detail
NUMBER :	SNCRP-D20a
SCALE :	1:2
DRAWN BY :	NKT
DATE :	28-Jun-2022
REVISED :	

EQUUS  
 Cold Roof on Plywood on PV  
 www.equus.co.nz

AUTHORIZED DISTRIBUTOR  
**SOPREMA**





- Concrete Roof Slab laid to Fall
- EQUUS Peel & Stick primer
- EQUUS NOVA-SK base sheet (self-adhered)
- EQUUS NOVA-SK MINERAL cap sheet
- Allproof Dome Camp Ring Drain

PROJECT: Cold Roof on Concrete Standard Detail  
 TITLE: Allproof drain  
 NUMBER: SNCRD-D2a SCALE: 1:3  
 DRAWN BY: NKT DATE: 20-July-2022 REVISED:

**EQUUS** AUTHORIZED DISTRIBUTOR **SOPREMA**

- Concrete Roof Slab laid to Fall
- EQUUS Peel & Stick primer
- EQUUS NOVA-SK base sheet (self-adhered)
- EQUUS NOVA-SK MINERAL cap sheet
- Aquaknight HFlow roof drain

PROJECT: Cold Roof on Concrete Standard Detail  
 TITLE: Aquaknight HFlow roof drain  
 NUMBER: SNCRD-D2b SCALE: 1:3  
 DRAWN BY: NKT DATE: 20-July-2022 REVISED:

**EQUUS** AUTHORIZED DISTRIBUTOR **SOPREMA**

- Concrete Roof Slab laid to Fall
- EQUUS Peel & Stick primer
- EQUUS NOVA-SK base sheet (self-adhered)
- EQUUS NOVA-SK MINERAL cap sheet
- EQUUS bitumen fillet or approved alternative
- EQUUS Base Sheet, as separate piece connected to Drainage
- EQUUS Cap Sheet, as separate piece connected to Drainage
- Allproof Dome Camp Ring Drain

PROJECT: Cold Roof on Concrete Standard Detail  
 TITLE: Internal Gutter and parapet - Allproof drain  
 NUMBER: SNCRD-D3a SCALE: 1:3  
 DRAWN BY: NKT DATE: 20-July-2022 REVISED:

**EQUUS** AUTHORIZED DISTRIBUTOR **SOPREMA**

- Concrete Roof Slab laid to Fall
- EQUUS Peel & Stick primer
- EQUUS NOVA-SK base sheet (self-adhered)
- EQUUS NOVA-SK MINERAL cap sheet
- EQUUS bitumen fillet or approved alternative
- EQUUS Base Sheet, as separate piece connected to Drainage
- EQUUS Cap Sheet, as separate piece connected to Drainage
- Aquaknight HFlow roof drain
- Plywood Plinth

PROJECT: Cold Roof on Concrete Standard Detail  
 TITLE: Internal Gutter and parapet - Aquaknight HFlow roof drain  
 NUMBER: SNCRD-D3b SCALE: 1:3  
 DRAWN BY: NKT DATE: 20-July-2022 REVISED:

**EQUUS** AUTHORIZED DISTRIBUTOR **SOPREMA**

- Concrete Roof Slab laid to Fall
- EQUUS Peel & Stick primer
- EQUUS NOVA-SK base sheet (self-adhered)
- EQUUS NOVA-SK MINERAL cap sheet
- Sealant
- EQUUS Alean Flashing (Quadro) or EQUUS Matasyr
- SBS penetration

PROJECT: Cold Roof on Concrete Standard Detail - Novalgise  
 TITLE: Pipe Penetration  
 NUMBER: SNCRD-D4a SCALE: 1:3  
 DRAWN BY: NKT DATE: 19-July-2022 REVISED:

**EQUUS** AUTHORIZED DISTRIBUTOR **SOPREMA**

- Concrete Roof Slab laid to Fall
- EQUUS Peel & Stick primer
- EQUUS NOVA-SK base sheet (self-adhered)
- EQUUS base sheet as separate piece over Plywood Plinth
- EQUUS NOVA-SK MINERAL cap sheet
- EQUUS cap sheet, as separate piece over Shrink Sleeve
- Plywood Plinth
- Bitumen Flange attached to Shrink Sleeve Body
- EQUUS Alean Mastic 2200 bitumen sealant
- Shrink Sleeve Body internal diameter 50 mm
- Shrink Sleeve

Internal diameter	Body	Sleeve shrinkable to
18 mm	12 mm	8 mm
22 mm	22 mm	12 mm
42 mm	42 mm	22 mm
55 mm	55 mm	42 mm
66 mm	66 mm	55 mm
88 mm	88 mm	66 mm
110 mm	110 mm	88 mm

PROJECT: Cold Roof on Concrete Standard Detail  
 TITLE: Pipe Penetration with Shrink Sleeve  
 NUMBER: SNCRD-D4b SCALE: 1:3  
 DRAWN BY: NKT DATE: 20-July-2022 REVISED:

**EQUUS** AUTHORIZED DISTRIBUTOR **SOPREMA**

- Concrete Roof slab laid to fall
- EQUUS Peel & Stick primer
- EQUUS NOVA-SK base sheet (self-adhered)
- EQUUS NOVA-SK MINERAL cap sheet
- EQUUS Capsheet as separate piece over Roof edge profile
- S/S Camp Ring
- Metal Pipe Penetration with gooseneck and installation Flange

PROJECT: Cold Roof on Concrete Standard Detail  
 TITLE: Pipe Penetration Solar PV Power Conduit  
 NUMBER: SNCRD-D4c SCALE: 1:3  
 DRAWN BY: NKT DATE: 20-July-2022 REVISED:

**EQUUS** AUTHORIZED DISTRIBUTOR **SOPREMA**

- Concrete Roof slab laid to fall
- EQUUS Peel & Stick primer
- EQUUS NOVA-SK base sheet (self-adhered)
- EQUUS NOVA-SK MINERAL cap sheet
- EQUUS cap sheet as separate piece over Plywood Plinth
- Plywood Plinth
- EQUUS bitumen fillet or approved alternative
- EQUUS Alean Mastic 2200 bitumen sealant
- Ventilation Pipe

PROJECT: Cold Roof on Concrete Standard Detail  
 TITLE: Ventilation Pipe with plinth Detail  
 NUMBER: SNCRD-D4d SCALE: 1:3  
 DRAWN BY: NKT DATE: 20-July-2022 REVISED:

**EQUUS** AUTHORIZED DISTRIBUTOR **SOPREMA**

- Concrete Roof Slab laid to Fall
- EQUUS Peel & Stick primer
- EQUUS NOVA-SK base sheet (self-adhered)
- EQUUS NOVA-SK MINERAL cap sheet
- EQUUS Alean Flashing (Quadro) or EQUUS Matasyr
- Electrical Conduit with SBS Flange

PROJECT: Cold Roof on Concrete Standard Detail  
 TITLE: Electrical Conduit  
 NUMBER: SNCRD-D4e SCALE: 1:4  
 DRAWN BY: NKT DATE: 20-July-2022 REVISED:

**EQUUS** AUTHORIZED DISTRIBUTOR **SOPREMA**

- ① Concrete Roof Slab laid to Fall
- ② EQUUS Peel & Stick primer
- ③ EQUUS NOVA-SK base sheet (self-adhered)
- ④ EQUUS NOVA-SK MINERAL cap sheet
- ⑤ EQUUS cap sheet as separate piece
- ⑥ Sloped drainage cricket to divert water around skylight
- ⑦ EQUUS blumen fillet or approved alternative
- ⑧ Skylight Joinery

PROJECT :	Cold Roof on Concrete Standard Detail
TITLE :	Skylight/Roof hatch with diverter
NUMBER :	SNCR-C05a
SCALE :	1:3
DRAWN BY :	NKT
DATE :	20-July-2022
REVISED :	

**EQUUS** **SOPREMA**

- ① Concrete Roof Slab laid to Fall
- ② EQUUS Peel & Stick primer
- ③ EQUUS NOVA-SK base sheet (self-adhered)
- ④ EQUUS NOVA-SK MINERAL cap sheet
- ⑤ EQUUS cap sheet as separate piece
- ⑥ Extra triangular piece of EQUUS cap sheet to divert water
- ⑦ EQUUS blumen fillet or approved alternative
- ⑧ Skylight Joinery

PROJECT :	Cold Roof on Concrete Standard Detail
TITLE :	Skylight/Roof hatch with Extra triangular piece of cap sheet to divert water
NUMBER :	SNCR-C05b
SCALE :	1:4
DRAWN BY :	NKT
DATE :	20-July-2022
REVISED :	

**EQUUS** **SOPREMA**

**STEP 2: Fixing of the Equipment**

- ① Concrete Roof Slab laid to Fall
- ② EQUUS Peel & Stick primer
- ③ EQUUS NOVA-SK base sheet (self-adhered)
- ④ EQUUS NOVA-SK MINERAL cap sheet
- ⑤ EQUUS cap sheet as separate piece over Batten
- ⑥ Roof Equipment
- ⑦ EPDM Washer under Screwhead
- ⑧ Timber Roof Batten

**STEP 1: Fixing of the batten**

PROJECT :	Cold Roof on Concrete Standard Detail
TITLE :	Roof Equipment Support Batten
NUMBER :	SNCR-C06a
SCALE :	1:4
DRAWN BY :	NKT
DATE :	20-July-2022
REVISED :	

**EQUUS** **SOPREMA**

- ① Concrete Roof Slab laid to Fall
- ② EQUUS Peel & Stick primer
- ③ EQUUS NOVA-SK base sheet (self-adhered)
- ④ EQUUS NOVA-SK MINERAL cap sheet
- ⑤ EQUUS cap sheet as separate piece over Batten
- ⑥ EQUUS blumen fillet or approved alternative
- ⑦ Roof Equipment Bracket
- ⑧ EPDM Washer
- ⑨ Timber Roof Batten

**STEP 2: Fixing of the Equipment**

**STEP 1: Fixing of the batten**

PROJECT :	Cold Roof on Concrete Standard Detail
TITLE :	Roof Equipment Support Batten (optional)
NUMBER :	SNCR-C06b
SCALE :	1:4
DRAWN BY :	NKT
DATE :	20-July-2022
REVISED :	

**EQUUS** **SOPREMA**

- ① Concrete Roof slab laid to fall
- ② EQUUS Peel & Stick primer
- ③ EQUUS NOVA-SK base sheet (self-adhered)
- ④ EQUUS NOVA-SK MINERAL cap sheet
- ⑤ Timber Plinth
- ⑥ Monkey Toe Roof Profile Fixing with Neoprene Washer
- ⑦ EQUUS Capsheet, as separate piece over Timber Plinth

**STEP 2: Fixing of the Monkey Toe Roof Profile**

**STEP 1: Fixing of the Timber Plinth**

PROJECT :	Cold Roof on Concrete Standard Detail
TITLE :	Monkey Toe Walkway Fixing Detail
NUMBER :	SNCR-C06c
SCALE :	1:4
DRAWN BY :	NKT
DATE :	20-July-2022
REVISED :	

**EQUUS** **SOPREMA**

- ① Concrete Roof slab laid to fall
- ② Concrete Plinth
- ③ EQUUS Peel & Stick primer
- ④ EQUUS NOVA-SK base sheet (self-adhered)
- ⑤ EQUUS NOVA-SK MINERAL cap sheet
- ⑥ EQUUS Capsheet as separate piece over Concrete Plinth
- ⑦ Fall Restraint Anchor
- ⑧ EQUUS Asian Mastic 2200 bitumen sealant

**STEP 1: Fixing of the Equipment**

PROJECT :	Cold Roof on Concrete Standard Detail
TITLE :	Fall restraint
NUMBER :	SNCR-C06d
SCALE :	1:4
DRAWN BY :	NKT
DATE :	20-July-2022
REVISED :	

**EQUUS** **SOPREMA**

- ① Concrete Roof Slab laid to Fall
- ② EQUUS Peel & Stick primer
- ③ EQUUS NOVA-SK base sheet (self-adhered)
- ④ EQUUS NOVA-SK MINERAL cap sheet
- ⑤ EQUUS Asian Flashing (Quadro) or EQUUS Matalcyl
- ⑥ Plywood Firth
- ⑦ 3 MM Foam tape on the underside of Baseplate
- ⑧ M10 Hus Screw
- ⑨ Neoprene Washer

PROJECT :	Cold Roof on Concrete Standard Detail
TITLE :	Safe2go 2 Cable
NUMBER :	SNCR-C06e
SCALE :	1:3
DRAWN BY :	NKT
DATE :	20-July-2022
REVISED :	

**EQUUS** **SOPREMA**

- ① Concrete Roof Slab laid to Fall
- ② EQUUS Peel & Stick primer
- ③ EQUUS NOVA-SK base sheet (self-adhered)
- ④ EQUUS NOVA-SK MINERAL cap sheet
- ⑤ EQUUS Asian Flashing (Quadro) or EQUUS Matalcyl
- ⑥ Plywood Firth
- ⑦ Neoprene Washer
- ⑧ M16 Chemsert Threaded Rod
- ⑨ M16 S/S Anchor eye nut

PROJECT :	Cold Roof on Concrete Standard Detail
TITLE :	M16 Anchor Eye to chemsert
NUMBER :	SNCR-C07
SCALE :	1:3
DRAWN BY :	NKT
DATE :	20-July-2022
REVISED :	

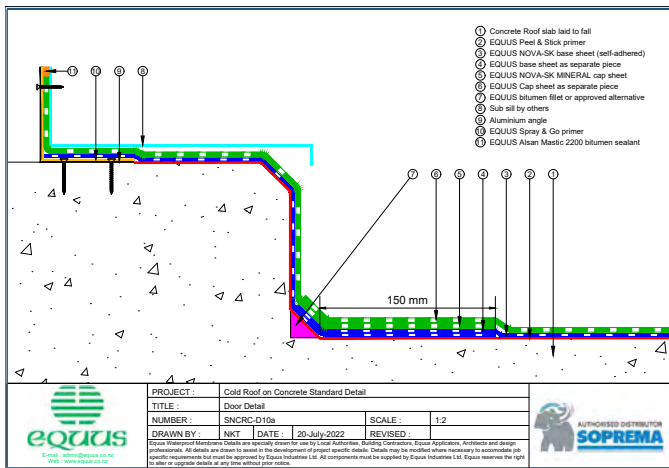
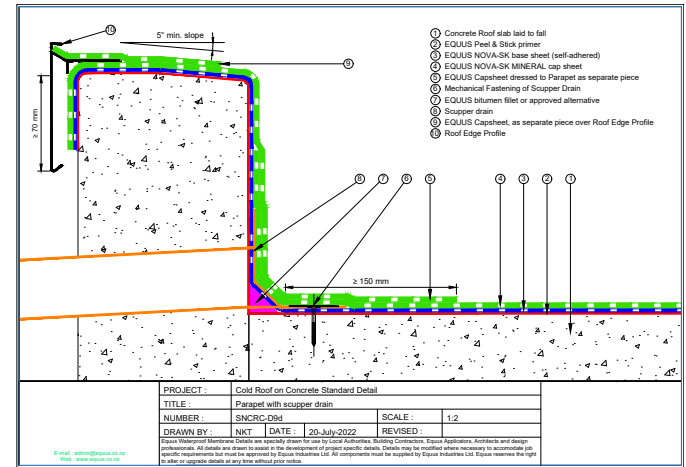
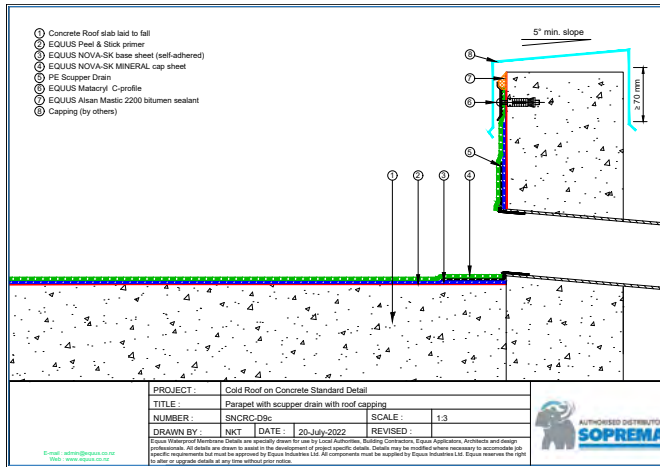
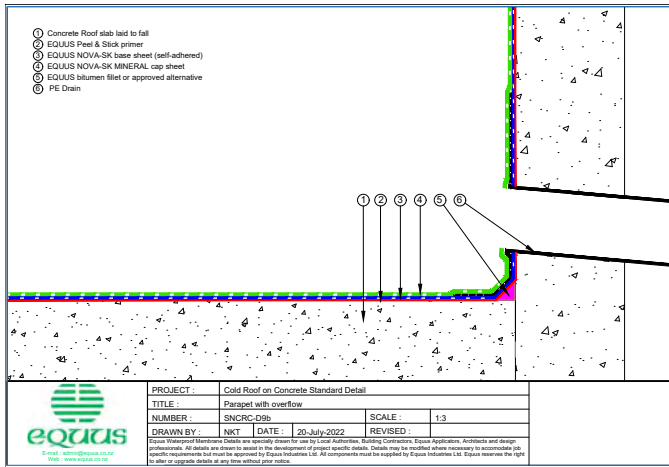
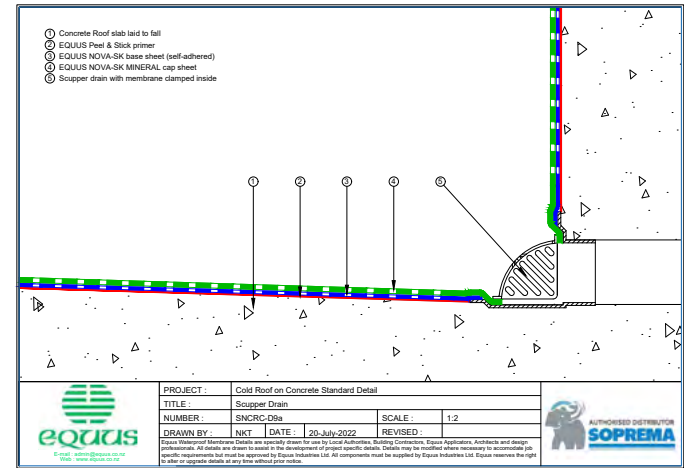
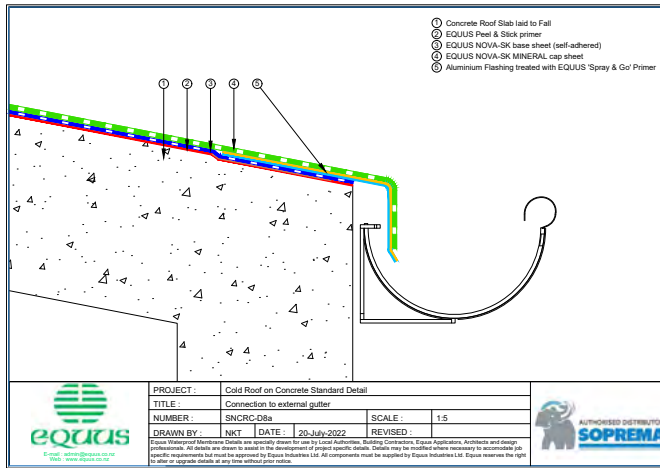
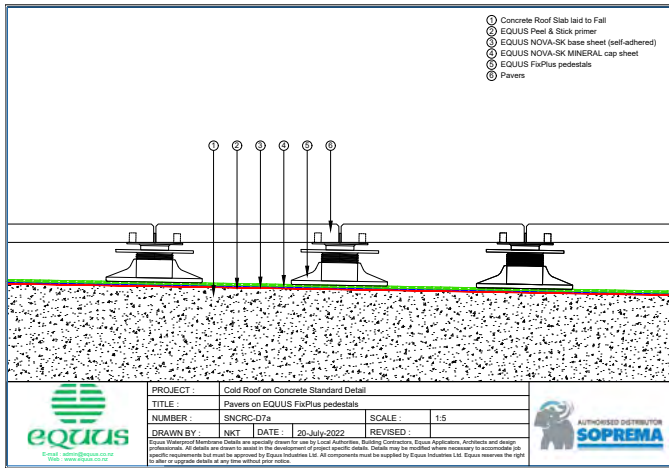
**EQUUS** **SOPREMA**

- ① Concrete Roof Slab laid to Fall
- ② EQUUS Peel & Stick primer
- ③ EQUUS NOVA-SK base sheet (self-adhered)
- ④ EQUUS NOVA-SK MINERAL cap sheet
- ⑤ Equus cap sheet as separate piece over concrete Plinth
- ⑥ Angle Fillet
- ⑦ Concrete Plinth
- ⑧ Equus cap sheet as an extra piece in case of heavy loads
- ⑨ Bracket fixing with Neoprene Washer
- ⑩ Equipment Bracket

PROJECT :	Cold Roof on Concrete Standard Detail
TITLE :	Heavy equipment plinth
NUMBER :	SNCR-C06f
SCALE :	1:3
DRAWN BY :	NKT
DATE :	20-July-2022
REVISED :	

**EQUUS** **SOPREMA**





# WHO ARE WE?

Equus Industries provides technical waterproofing solutions for Architects, Engineers, Property Managers, and Contractors in the building industry. One system does not fit all.

Equus can provide complete solutions, systems, specifications, technical support and warranties.

Equus is the Authorised Distributor for SOPREMA in New Zealand. SOPREMA was founded in 1908 in France and has over 100 factories worldwide producing waterproofing materials and thermal insulation.



## Equus Southern

Unit 6/100 Fitzgerald Ave,  
Christchurch

PO Box 19 846  
Christchurch

**Ph:** 03 353 2434

[southern@equus.nz](mailto:southern@equus.nz)

## Equus Central

45 Hutt Rd, Petone,  
Wellington

PO Box 38 636  
Wellington Mail Centre

**Ph:** 04 576 0333

[central@equus.nz](mailto:central@equus.nz)

## Equus Northern

211 Archers Rd, Wairau Valley,  
Glenfield, Auckland

PO Box 101 423  
North Shore Mail Centre

**Ph:** 09 415 4314

[northern@equus.nz](mailto:northern@equus.nz)